



SR 77 WILDLIFE ELEMENTS

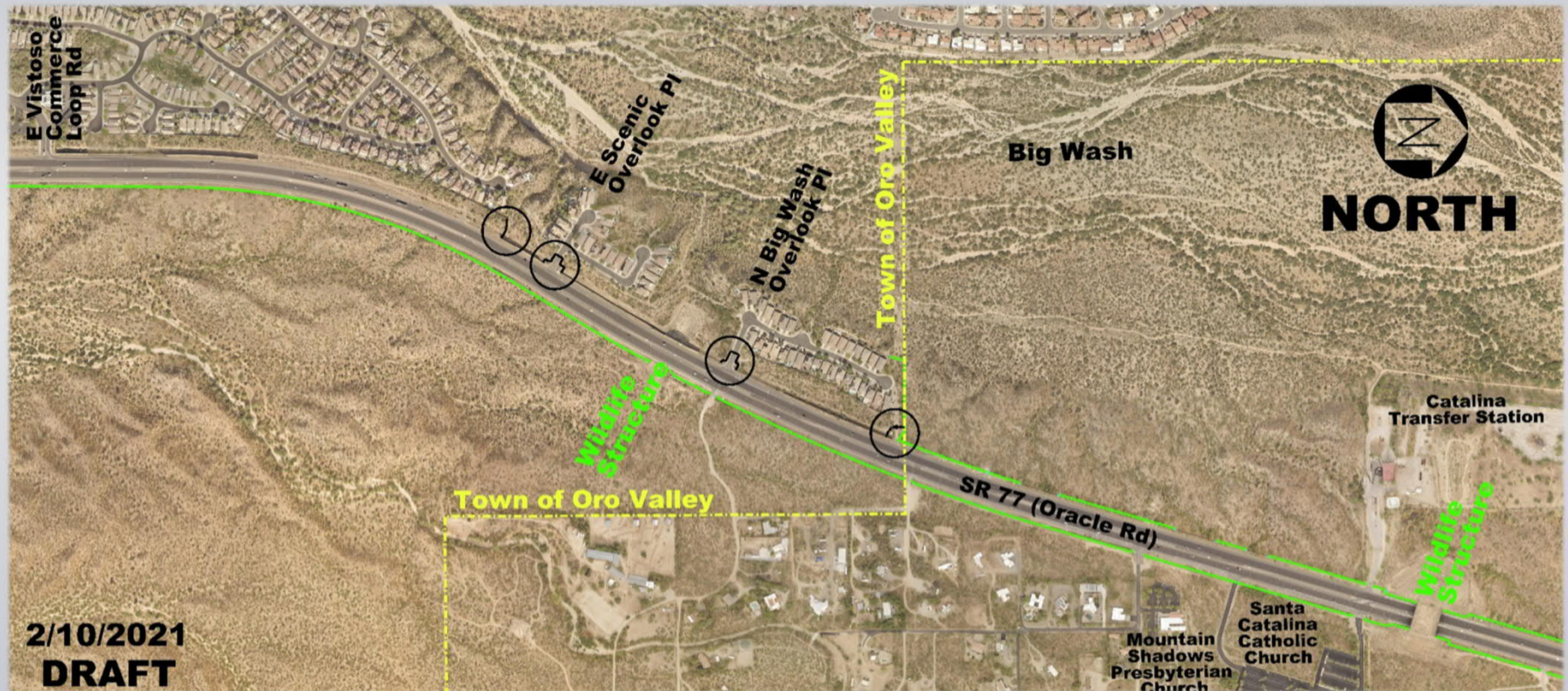


Background

- Final Planning / Design = January 2021
- Estimated Construction = June 2021

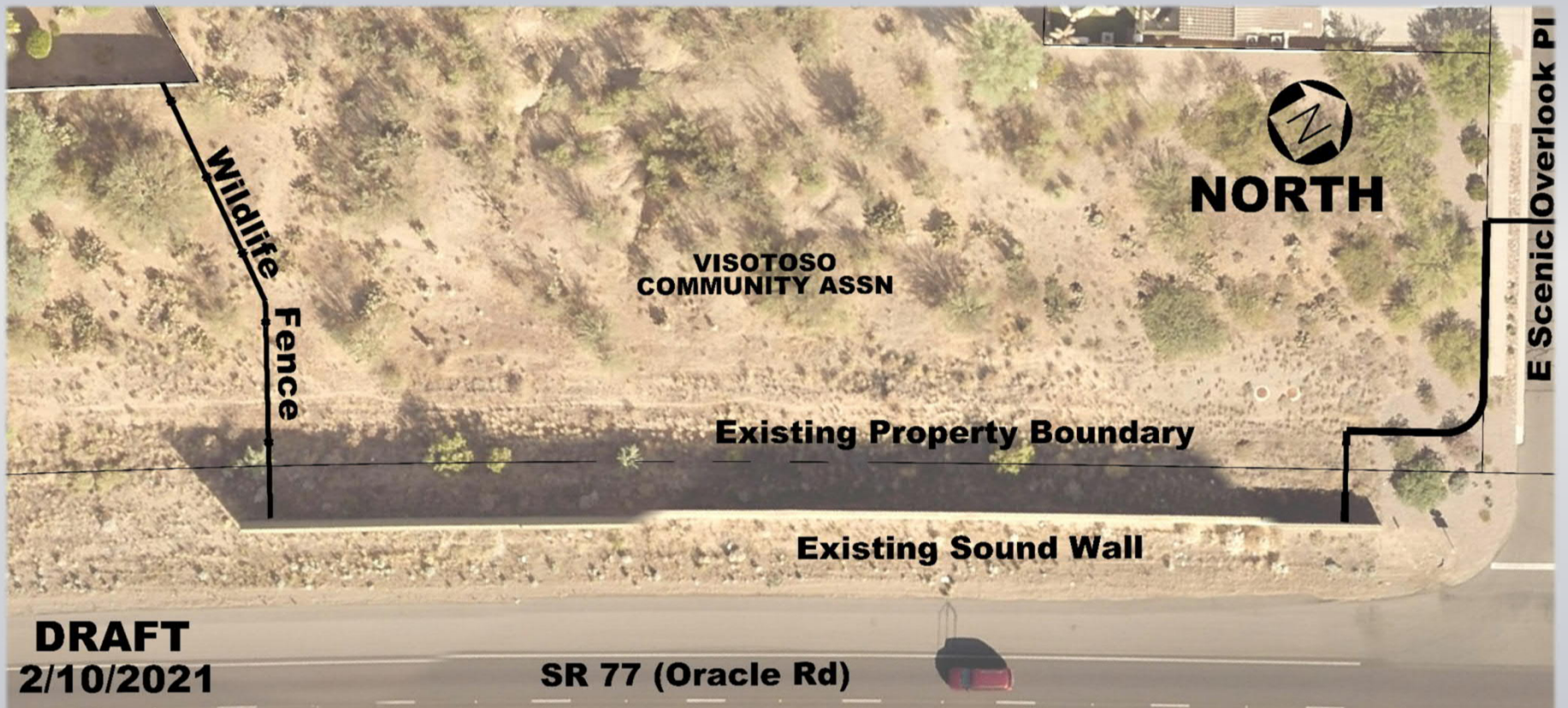
SR 77 WILDLIFE ELEMENTS

LOCATION MAP



SR 77 WILDLIFE ELEMENTS

SOUTHERN END



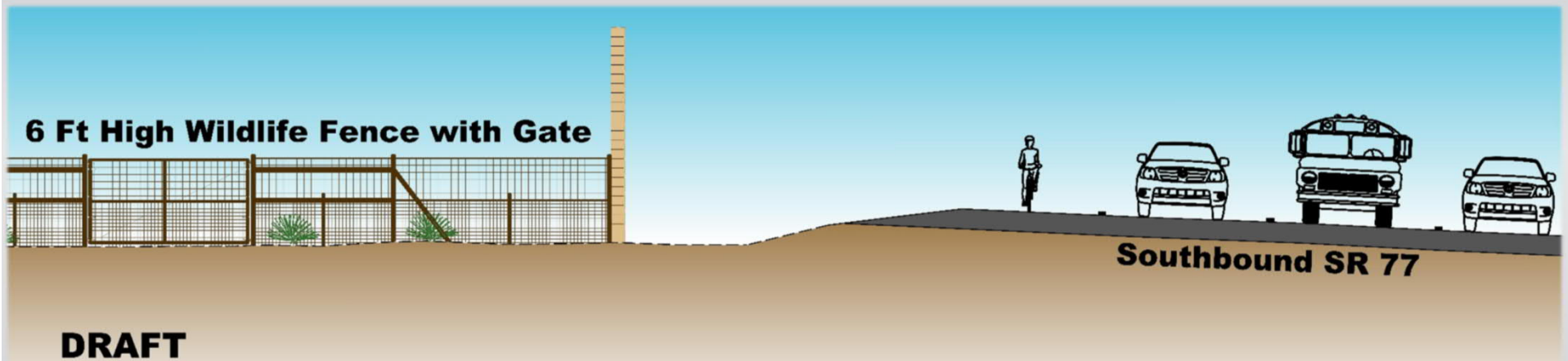
- 6' High Wildlife Fence
- 6' High Wildlife Fence Gate



SR 77 WILDLIFE ELEMENTS



LOOKING NORTH





SR 77 WILDLIFE ELEMENTS



LOOKING NORTHWEST

Scenic Overlook Pl

DRAFT



SR 77 WILDLIFE ELEMENTS

EXISTING WILDLIFE FENCING



SR 77 WILDLIFE ELEMENTS



- Remove Existing Wildlife Fence
- New Cattle Guard
- 6' High Wildlife Fence

NORTHERN END



SR 77 WILDLIFE ELEMENTS



LOOKING WEST

**Big Wash
Overlook PI**

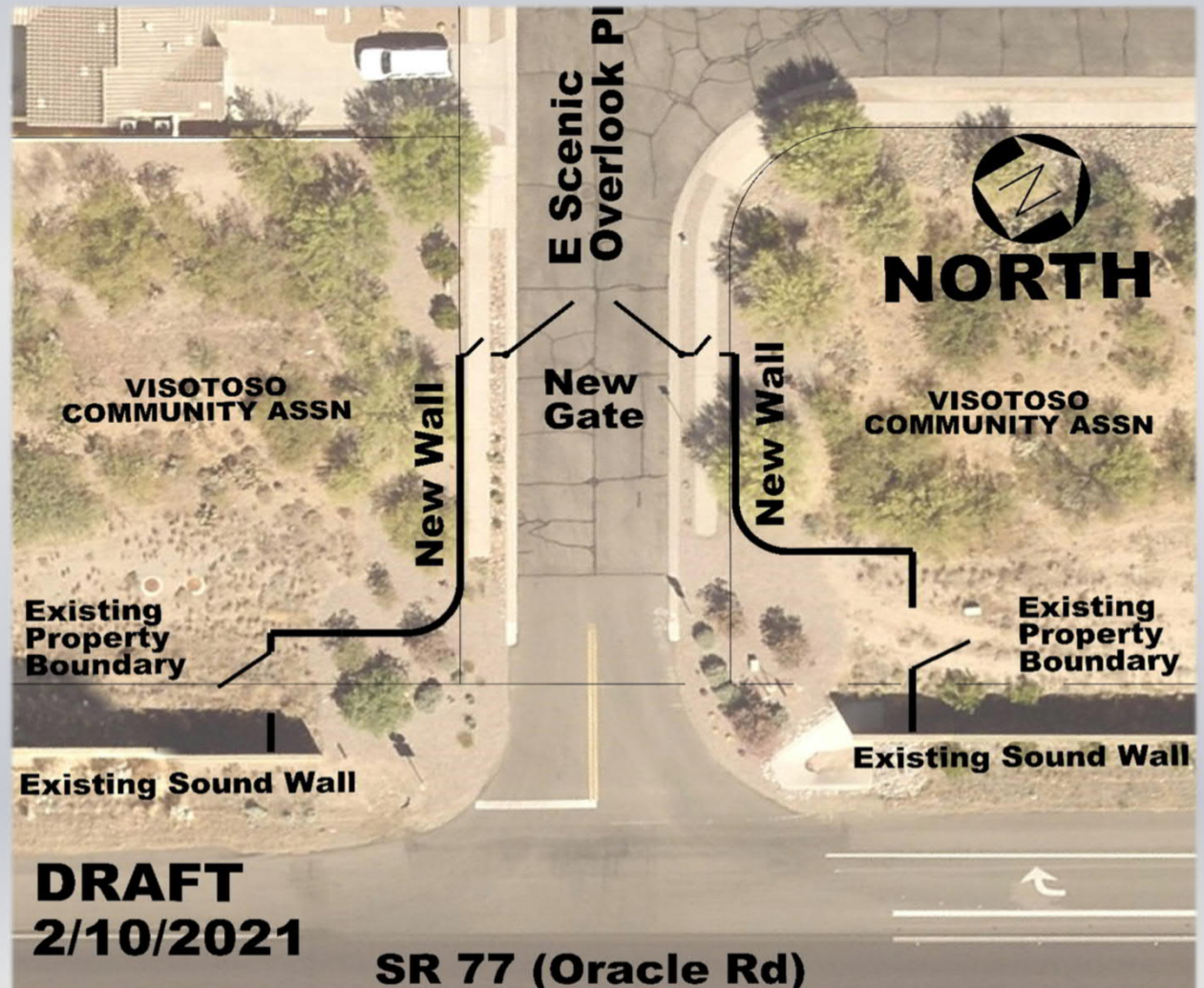
DRAFT



SR 77 WILDLIFE ELEMENTS

SCENIC OVERLOOK PL

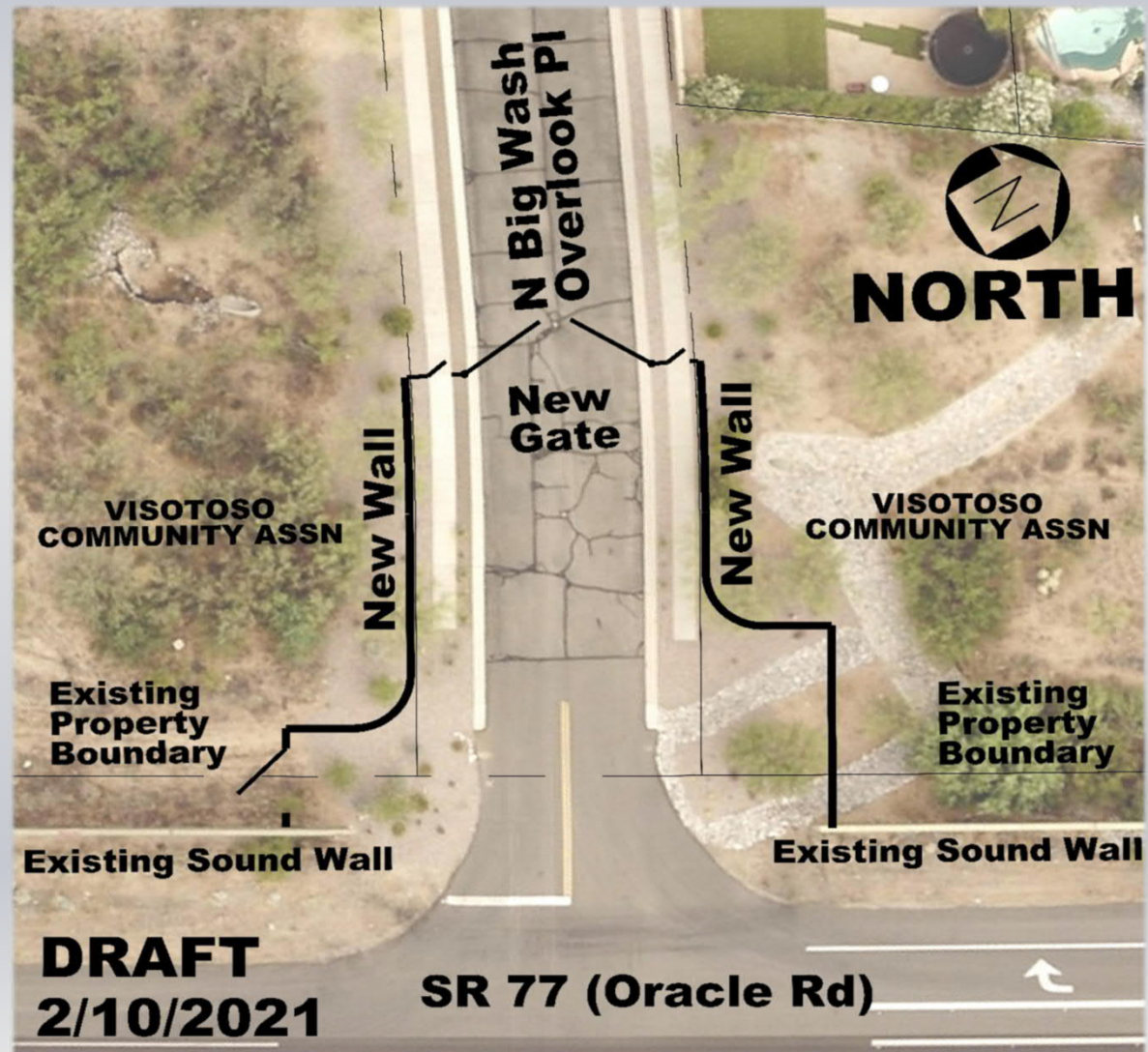
- Roadway Entry Gate
- 6' High Combination View Fence/Masonry Wall
- Pedestrian Gates
- Maintenance Gates



SR 77 WILDLIFE ELEMENTS

BIG WASH OVERLOOK PL

- Roadway Entry Gate
- 6' High Combination View Fence/Masonry Wall
- Pedestrian Gates
- Maintenance Gate



SR 77 WILDLIFE ELEMENTS

LOOKING WEST





SR 77 WILDLIFE ELEMENTS



QUESTIONS?