



SR 77 WILDLIFE ELEMENTS

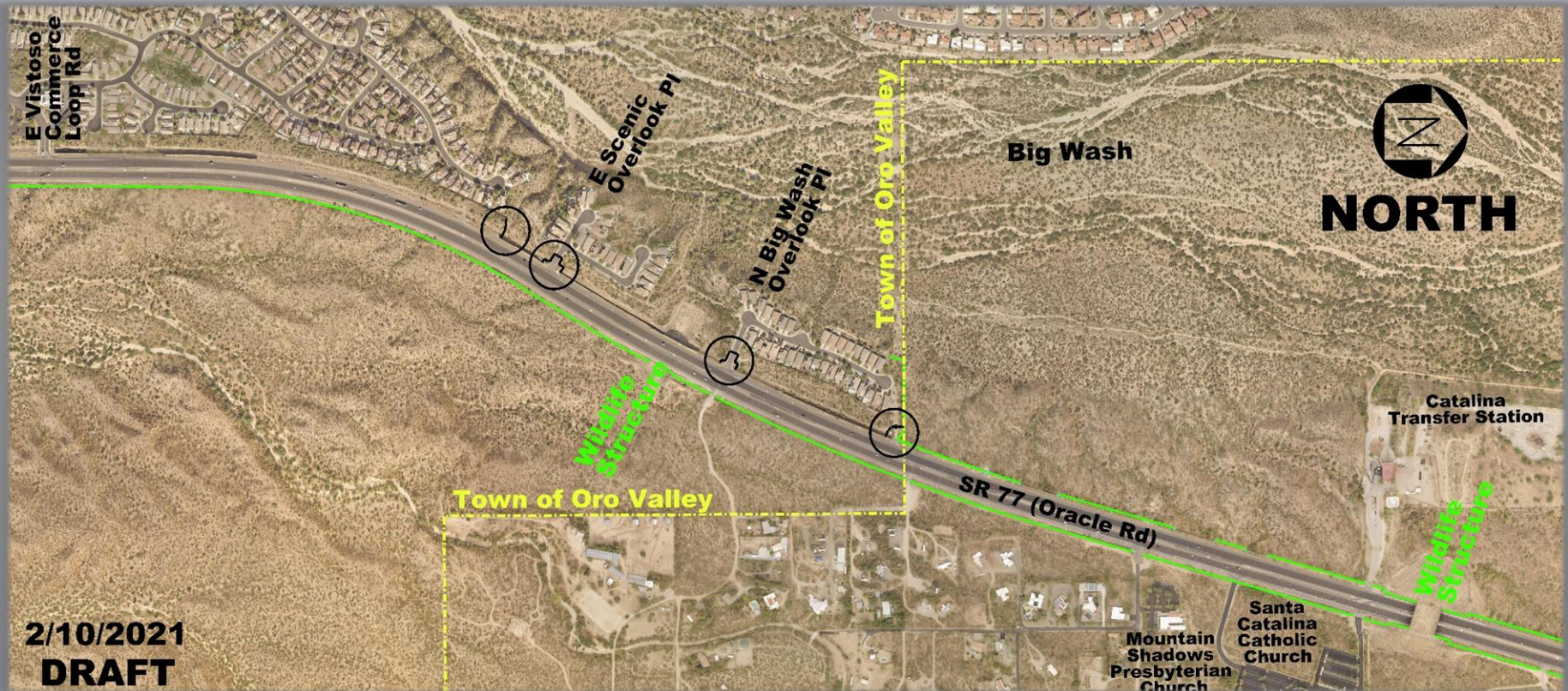


Background

- Final Planning / Design = January 2021
- Estimated Construction = June 2021

SR 77 WILDLIFE ELEMENTS

LOCATION MAP



SR 77 WILDLIFE ELEMENTS

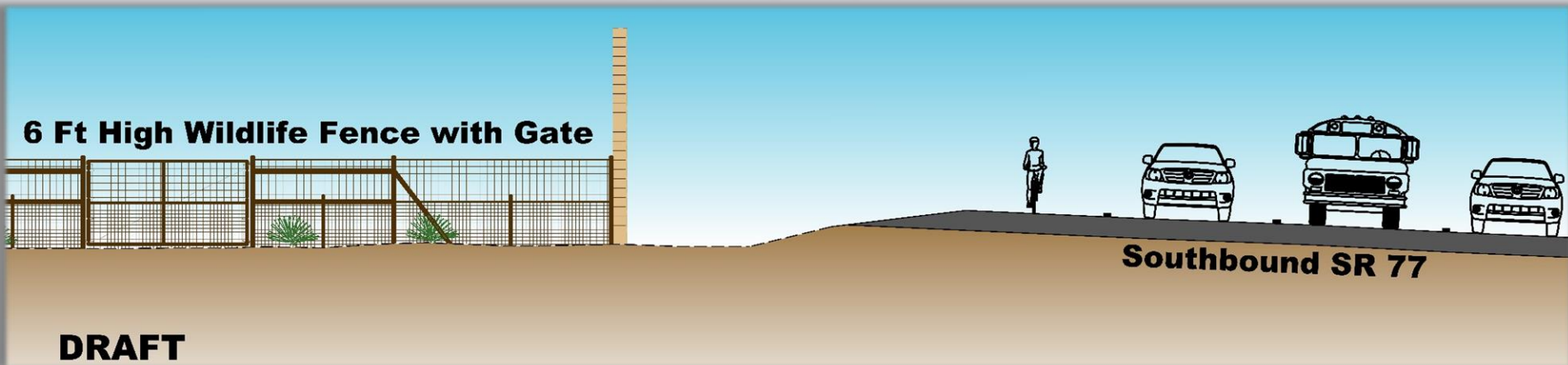
SOUTHERN END



- 6' High Wildlife Fence
- 6' High Wildlife Fence Gate

SR 77 WILDLIFE ELEMENTS

LOOKING NORTH



SR 77 WILDLIFE ELEMENTS

LOOKING NORTHWEST

Scenic Overlook Pl

DRAFT



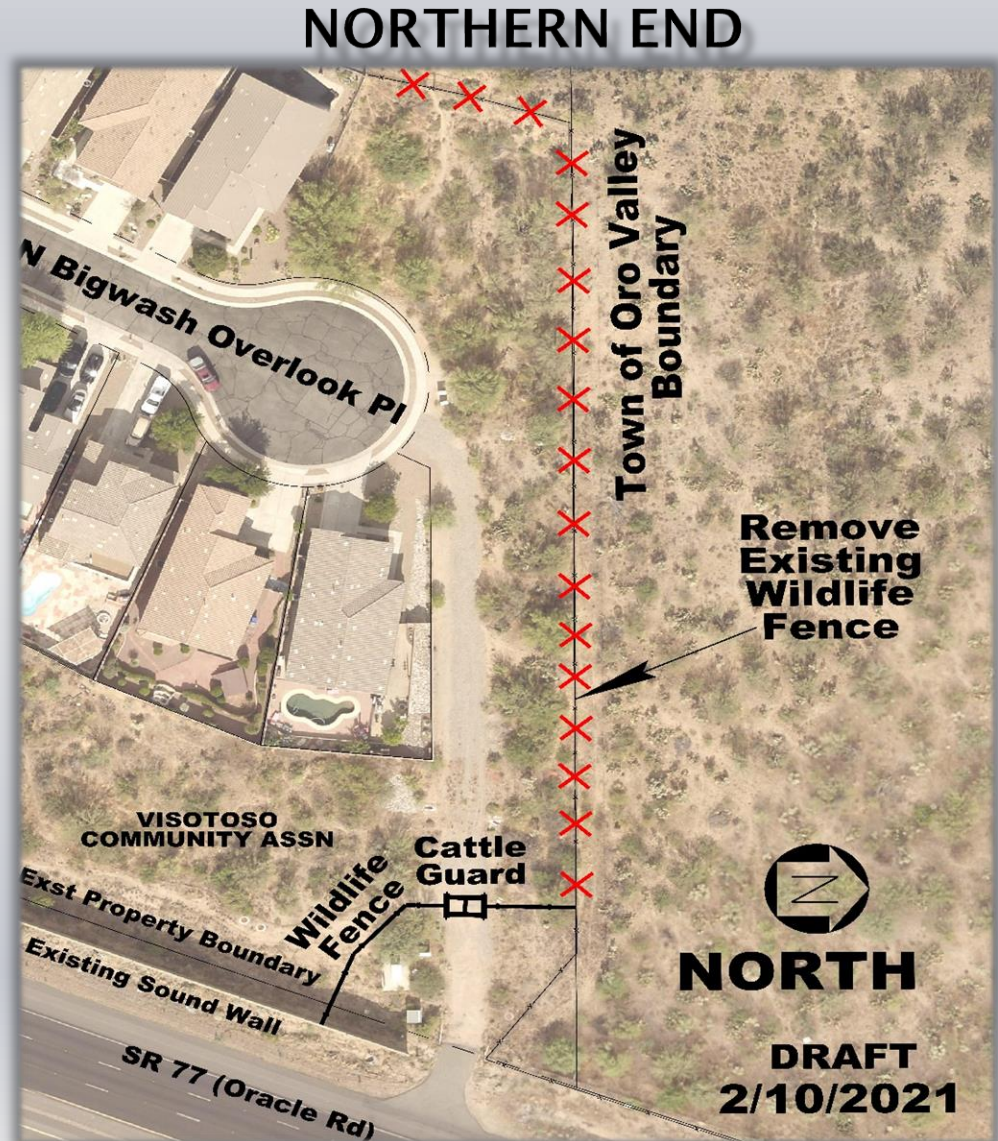
SR 77 WILDLIFE ELEMENTS

EXISTING WILDLIFE FENCING



SR 77 WILDLIFE ELEMENTS

- Remove Existing Wildlife Fence
- New Cattle Guard
- 6' High Wildlife Fence



SR 77 WILDLIFE ELEMENTS

LOOKING WEST

**Big Wash
Overlook PI**

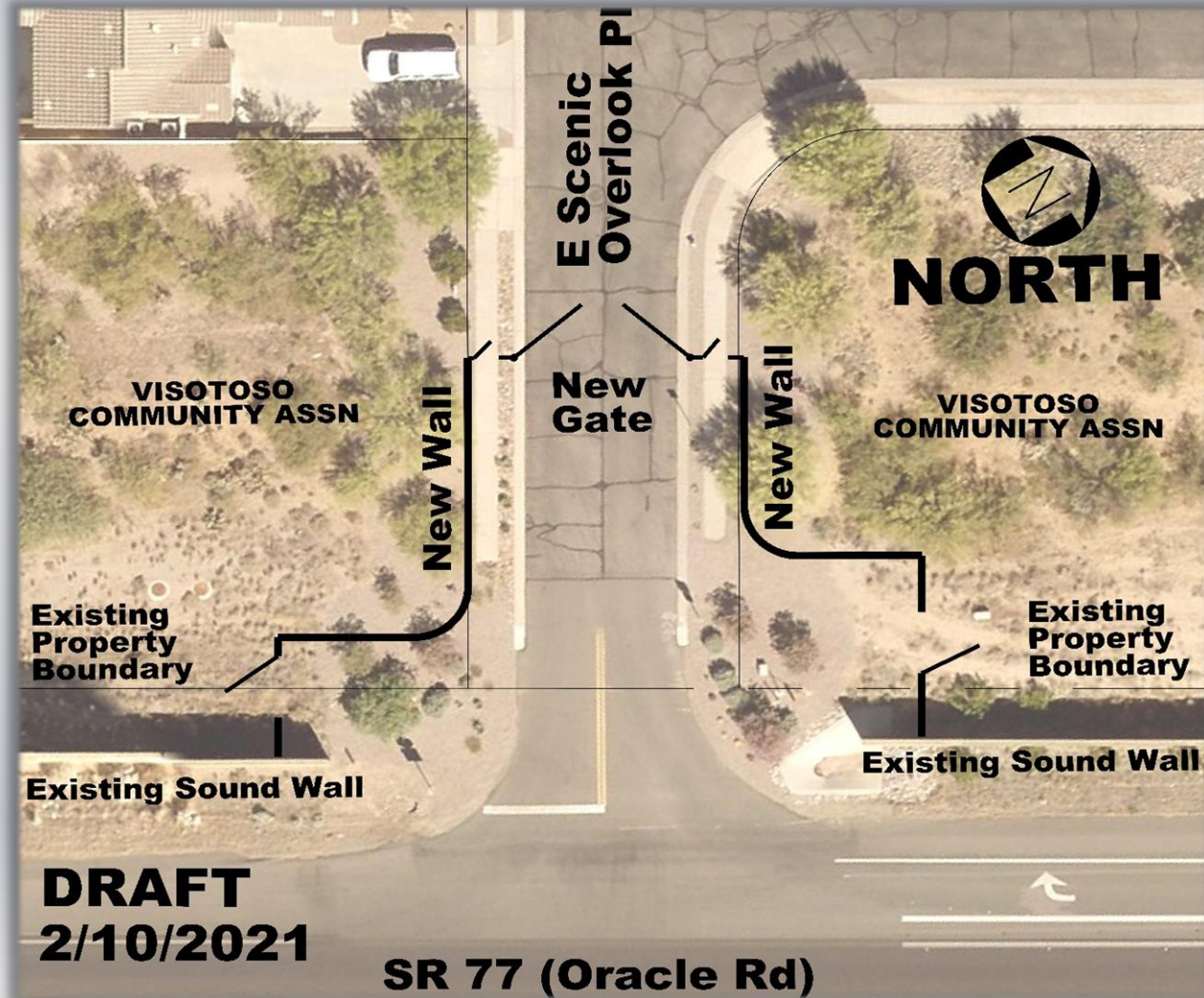
DRAFT



SR 77 WILDLIFE ELEMENTS

- Roadway Entry Gate
- 6' High Combination View Fence/Masonry Wall
- Pedestrian Gates
- Maintenance Gates

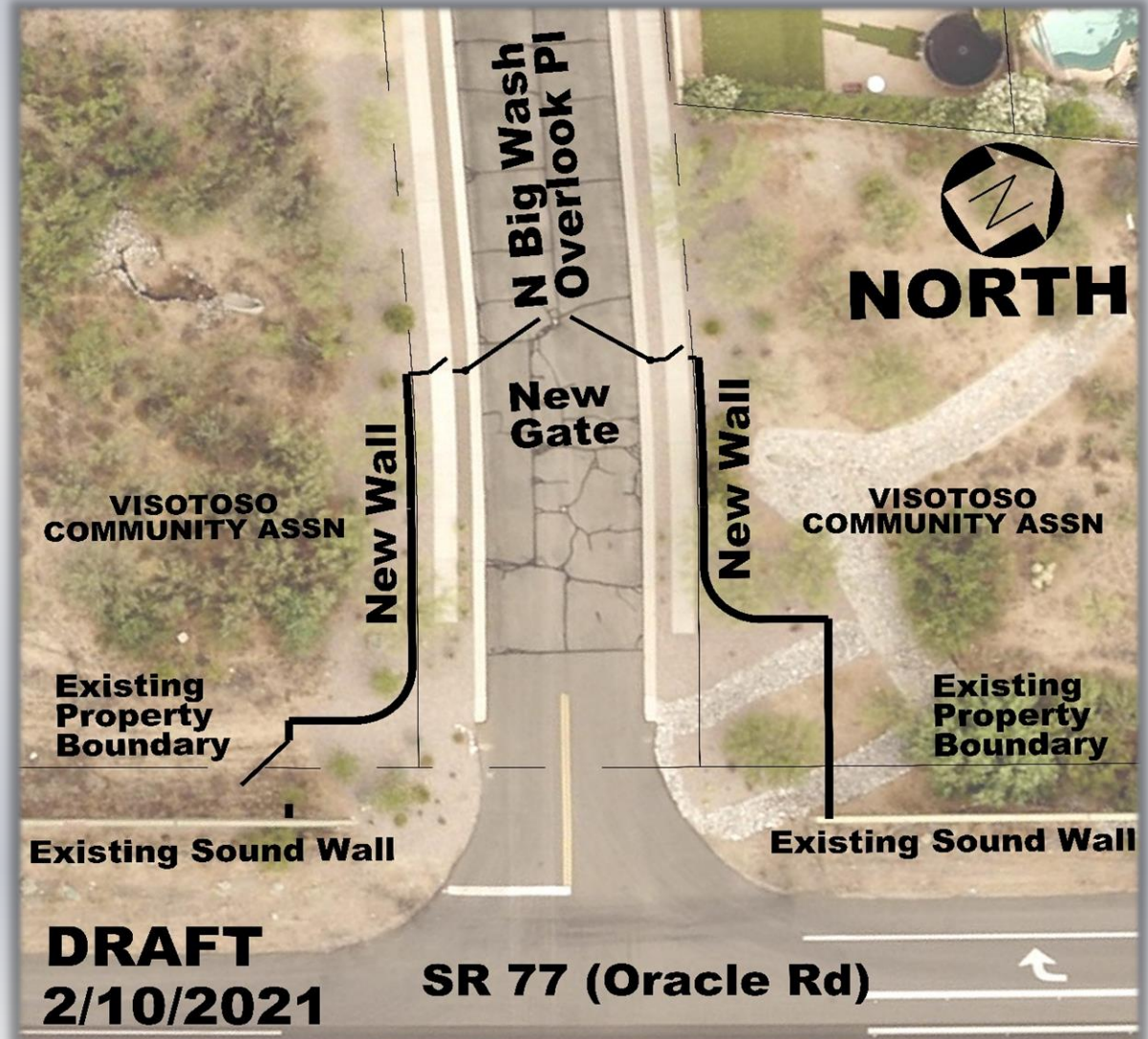
SCENIC OVERLOOK PL



SR 77 WILDLIFE ELEMENTS

BIG WASH OVERLOOK PL

- Roadway Entry Gate
- 6' High Combination
View Fence/Masonry Wall
- Pedestrian Gates
- Maintenance Gate



SR 77 WILDLIFE ELEMENTS

LOOKING WEST





SR 77 WILDLIFE ELEMENTS



QUESTIONS?