

GENERAL NOTES

1. THE GROSS AREA OF THIS DEVELOPMENT IS 6.46 ACRES

2. TOTAL UNDISTURBED AREA IS 0.2 ± ACRE

3. REQUIRED PERIMETER/SITE SETBACKS PER CR-5:
FRONT YARD = 20'
SIDE YARD = 10'
REAR YARD = 10'

PROVIDED PERIMETER/SITE SETBACKS:
FRONT YARD = 20'
SIDE YARD = 10'
REAR YARD = 10'
4. COMMON AREAS / OPEN SPACE SHALL BE OWNED AND MAINTAINED BY THE H.O.A.

5. EXISTING ZONING IS PAD (TR, CR-2, CR-5).

6. BUFFERYARD TYPES: TYPE 'C' (PER PIMA COUNTY STANDARDS AS DICTATED BY THE MELCOR/RIVER'S EDGE PAD)

7. ASSURANCES FOR LANDSCAPING AND RE-VEGETATION BONDS MUST BE POSTED PRIOR TO ISSUANCE OF GRADING PERMITS.

8. PROPERTY OWNER SHALL MAINTAIN BUFFERYARD PLANTINGS TO ENSURE UNOBSTRUCTED VISIBILITY TO MOTORISTS. ALL SHRUBS, ACCENTS, AND GROUNDCOVERS SHALL NOT EXCEED THIRTY (30) INCHES IN HEIGHT WITHIN SITE VISIBILITY TRIANGLES. TREES WITHIN SITE VISIBILITY TRIANGLES WILL BE MAINTAINED TO ENSURE THAT BRANCHES / FOLIAGE IS NOT BELOW A HEIGHT OF SIX (6') FEET.

9. IN THE EVENT OF ABANDONMENT OF THE SITE AFTER GRADING / DISTURBANCE OF NATURAL AREAS, DISTURBED AREAS SHALL BE RE-VEGETATED WITH A NON-IRRIGATED HYDRO SEED MIX FROM OVZCR ADDENDUM D: APPROVED REVEGETATION SEED MIX.

10. ALL PLANT MATERIAL SHALL MEET THE MINIMUM STANDARDS CONTAINED IN THE CURRENT EDITIONS OF THE ARIZONA NURSERY ASSOCIATION'S GROWERS COMMITTEE RECOMMENDED TREE SPECIFICATIONS AND THE AMERICAN ASSOCIATION OF NURSERYMEN AS TO SIZE, CONDITION AND APPEARANCE.

11. PROPERTY OWNER IS RESPONSIBLE FOR MAINTAINING THE TEMPORARY IRRIGATION SYSTEM AS LONG AS NECESSARY IN ORDER TO TRANSITION PLANTS OVER TO NATURAL SOURCES. ANY PLANT MATERIALS THAT DIE IN TRANSITION, FOR ANY REASONS, SHALL BE REPLACED IN ACCORDANCE WITH SECTION 27.6.E.4., MAINTENANCE.

12. LANDSCAPE SHALL CONFORM TO ORO VALLEY LANDSCAPE CODE.

13. MITIGATION OF SURVEYED PLANTS IN THE NATIVE PLANT PRESERVATION PLAN WILL BE INCORPORATED INTO THE LANDSCAPE DESIGN.

14. ALL PLANTS TO BE IRRIGATED WITH AN UNDERGROUND AUTOMATIC DRIP IRRIGATION SYSTEM.

15. THE DEVELOPER SHALL REPLACE REMOVED OR DAMAGED PLANT MATERIAL WITH LIKE SIZE AND SPECIES, AND SHALL MAINTAIN AND GUARANTEE (IN ACCORDANCE WITH SECTION 26.6.C AND I) THE REPLACEMENT PLANT MATERIALS FOR A PERIOD OF (3) YEARS.

16. LANDSCAPE AREAS THAT ARE SUSCEPTIBLE TO DAMAGE BY PEDESTRIAN OR AUTO TRAFFIC SHALL BE PROTECTED BY APPROPRIATE CURBS, TREE GUARDS OR OTHER DEVICES.

17. CURB-WAY CONSISTING OF INORGANIC GROUNDCOVER OR PLANTS NOT EXCEED TYPE 2 WATER USE SHALL BE PROVIDED BETWEEN CURB AND ALL SIDEWALKS.

18. LANDSCAPE SHALL BE DESIGNED TO MINIMIZE SEDIMENT, SAND, AND GRAVEL BEING CARRIED INTO THE STREETS BY STORM WATER OR OTHER RUNOFF.

19. LANDSCAPE DESIGN ENABLES ADEQUATE PLANT SPACING TO ENSURE SURVIVABILITY AT PLANT MATURITY. ALL LANDSCAPED AREAS SHALL BE FINISHED WITH A NATURAL TOPPING MATERIAL OF AT LEAST TWO (2) INCHES IN DEPTH.

20. TREES AND LARGE SHRUBS SHALL BE ADEQUATELY SUPPORTED WHEN PLANTED.

21. SLOPES SHALL BE NO STEEPER THAN THREE TO ONE (3:1) UNLESS OTHERWISE SPECIFIED IN A SITE-SPECIFIC SOILS REPORT PREPARED BY A REGISTERED CIVIL ENGINEER AND APPROVED BY THE TOWN ENGINEER.

22. DEEP ROOTED VEGETATION AND TREES SHALL NOT BE PLANTED CLOSER THAN 7.5 FEET FROM A PUBLIC WATER LINE. EXCEPTIONS FOR ALTERNATIVE DESIGN SOLUTIONS SUCH AS ROOT BARRIERS SHALL BE CONSIDERED ON A CASE BY CASE BASIS.

23. PLANTS IN FRONT YARDS, BUFFERYARDS AND COMMON AREAS THAT REQUIRE IRRIGATION MAY NOT BE ESTABLISHED IN AREAS THAT ARE SHAPED IN A MANNER NOT TO ENABLE PARTIAL CONTAINMENT OF IRRIGATION OR RAINWATER.

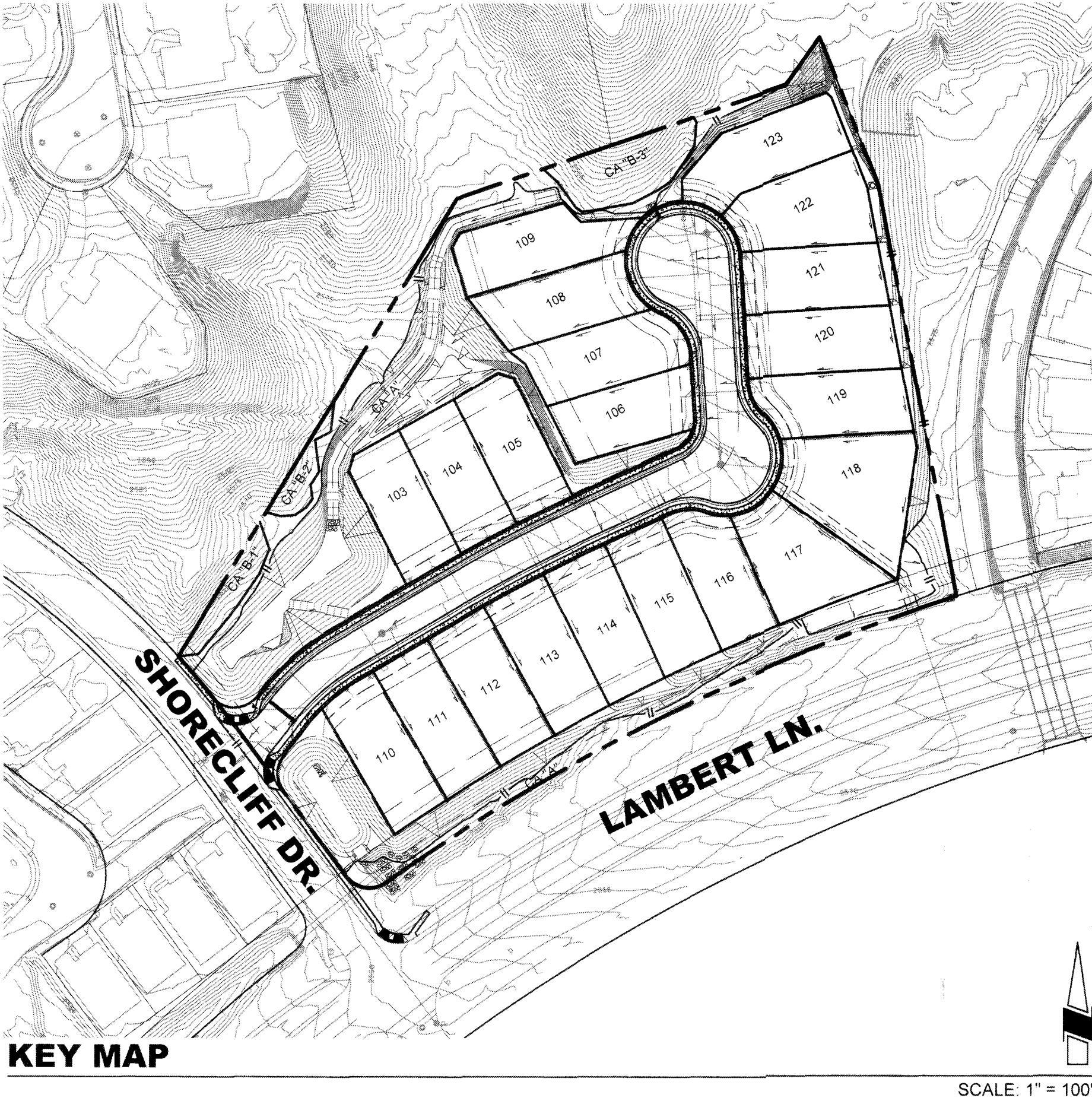
LANDSCAPE BUFFERYARD TABLE

BUFFER	BUFFER TYPE	WIDTH	BUFFER LENGTH	TREES REQ'D	TREES PROVIDED	SHRUBS REQ'D	SHRUBS PROVIDED	ACCENTS REQ'D	ACCENTS PROVIDED
LAMBERT LN.	C *	12.5'	575 LF	12	23	12	23	24	46
SHORE CLIFF DR.	C *	12.5'	200 LF	4	7	4	8	8	16
NORTH	N/A	N/A							
EAST	N/A	N/A							

* PER PIMA COUNTY STANDARDS AS DICTATED BY THE MELCOR/RIVER'S EDGE PAD



FINAL LANDSCAPE PLAN FOR:
RIVER'S EDGE
LOTS 103-123
1901060



SYMBOL LEGEND

- ---

PROPERTY BOUNDARY
- ---

- LOT LINE

BUILDING SETBACK

EASEMENT

TOP/TOE OF SLOPE

GRADING LIMIT

WATERSHED BOUNDARY

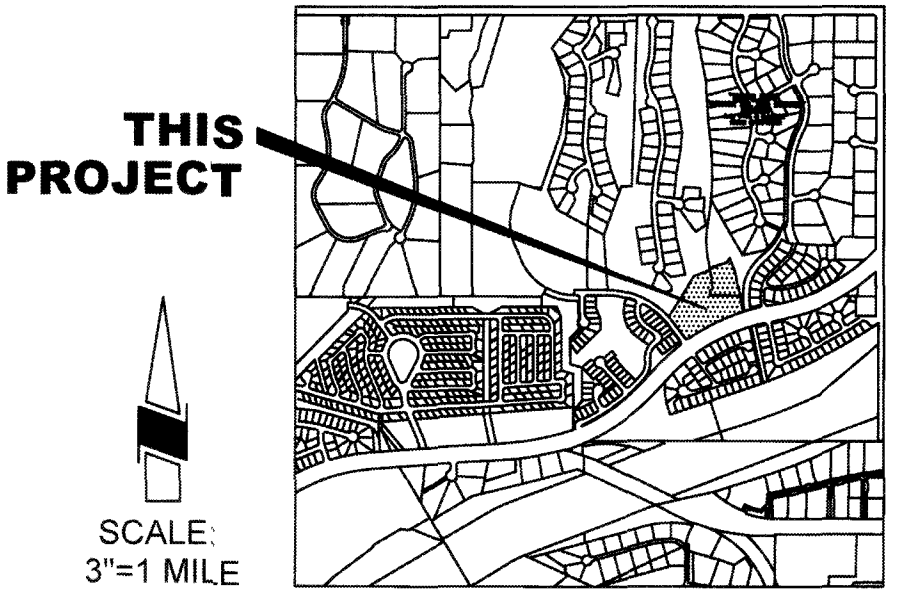
PROPOSED SEWER LINE AND MANHOLE

PROPOSED SEWER LINE AND CLEANOUT

PROPOSED WATER LINE AND VALVE

PROPOSED FIRE HYDRANT

PROPOSED WATER METER



LOCATION MAP
A PORTION OF SECTION 12, T 11 S, R 13 E
G & SRM TOWN OF ORO VALLEY,
PIMA COUNTY, ARIZONA

PROJECT DIRECTORY:

OWNER/DEVELOPER

MELCOR DEVELOPMENTS ARIZONA, INC.
6930 E CHAUNCEY LANE, SUITE 153
PHOENIX, AZ 85054
PHONE: 480-699-4687
CONTACT: RYAN MOTT
EMAIL: RMOTT@MELCOR.CA

LANDSCAPE ARCHITECT

RICK ENGINEERING CO.
3945 E. FORT LOWELL ROAD, SUITE 111
TUCSON, AZ 85712
CONTACT PERSON: MARK FELLINGER
PHONE: 520-795-1000
E-MAIL: mfellinger@rickengineering.com

CIVIL ENGINEER

RICK ENGINEERING COMPANY
6150 NORTH 16TH STREET
PHOENIX, AZ 85016
PHONE: 602-957-3350
CONTACT: CHRIS PATTON, P.E.
EMAIL: CPATTON@RICKENGINEERING.COM

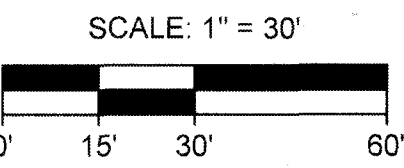
SHEET INDEX

SHT.	#	SHEET DESCRIPTION
L-01	1	COVER SHEET
L-02	2	PLANTING PLAN
L-03	3	PLANTING LEGEND
L-04	4	PLANTING DETAILS
L-05	5	IRRIGATION PLAN
L-06	6	IRRIGATION NOTES
L-07	7	IRRIGATION LEGEND
L-08	8	IRRIGATION DETAILS
L-09	9	SPECIFICATIONS
L-10	10	SPECIFICATIONS
L-11	11	SPECIFICATIONS
L-12	12	SPECIFICATIONS

APPROVAL

Ben Vela 11/20/2020
PLANNING AND ZONING
ADMINISTRATOR
DATE

OV1801921
OV1600944, OV12-03-20
RIVERS EDGE (MELCOR) PLANNED AREA DEVELOPMENT #7



L-01

FINAL LANDSCAPE PLAN FOR:
RIVER'S EDGE
LOTS 103-123

LOTS 103-123 AND COMMON AREAS "A", "B", "C", "D", "E", "F", "G", "H", "I", "J", "K", "L", "M", "N", "O", "P", "Q", "R", "S", "T", "U", "V", "W", "X", "Y", "Z", "AA", "AB", "AC", "AD", "AE", "AF", "AG", "AH", "AI", "AJ", "AK", "AL", "AM", "AN", "AO", "AP", "AQ", "AR", "AS", "AT", "AU", "AV", "AW", "AX", "AY", "AZ", "BA", "BB", "BC", "BD", "BE", "BF", "BG", "BH", "BI", "BJ", "BK", "BL", "BM", "BN", "BO", "BP", "BQ", "BR", "BS", "BT", "BU", "BV", "BW", "BX", "BY", "BZ", "CA", "CB", "CC", "CD", "CE", "CF", "CG", "CH", "CI", "CJ", "CK", "CL", "CM", "CN", "CO", "CP", "CQ", "CR", "CS", "CT", "CU", "CV", "CW", "CX", "CY", "CZ", "DA", "DB", "DC", "DD", "DE", "DF", "DG", "DH", "DI", "DJ", "DK", "DL", "DM", "DN", "DO", "DP", "DQ", "DR", "DS", "DT", "DU", "DV", "DW", "DX", "DY", "DZ", "EA", "EB", "EC", "ED", "EE", "EF", "EG", "EH", "EI", "EJ", "EK", "EL", "EM", "EN", "EO", "EP", "EQ", "ER", "ES", "ET", "EU", "EV", "EW", "EX", "EY", "EZ", "FA", "FB", "FC", "FD", "FE", "FF", "FG", "FH", "FI", "FJ", "FK", "FL", "FM", "FN", "FO", "FP", "FQ", "FR", "FS", "FT", "FU", "FV", "FW", "FX", "FY", "FZ", "GA", "GB", "GC", "GD", "GE", "GF", "GG", "GH", "GI", "GJ", "GK", "GL", "GM", "GN", "GO", "GP", "GQ", "GR", "GS", "GT", "GU", "GV", "GW", "GX", "GY", "GZ", "HA", "HB", "HC", "HD", "HE", "HF", "HG", "HH", "HI", "HJ", "HK", "HL", "HM", "HN", "HO", "HP", "HQ", "HR", "HS", "HT", "HU", "HV", "HW", "HX", "HY", "HZ", "IA", "IB", "IC", "ID", "IE", "IF", "IG", "IH", "II", "IJ", "IK", "IL", "IM", "IN", "IO", "IP", "IQ", "IR", "IS", "IT", "IU", "IV", "IW", "IX", "IY", "IZ", "JA", "JB", "JC", "JD", "JE", "JF", "JG", "JH", "JI", "JJ", "JK", "JL", "JM", "JN", "JO", "JP", "JQ", "JR", "JS", "JT", "JU", "JV", "JW", "JX", "JY", "JZ", "KA", "KB", "KC", "KD", "KE", "KF", "KG", "KH", "KI", "KJ", "KK", "KL", "KM", "KN", "KO", "KP", "KQ", "KR", "KS", "KT", "KU", "KV", "KW", "KX", "KY", "KZ", "LA", "LB", "LC", "LD", "LE", "LF", "LG", "LH", "LI", "LJ", "LK", "LL", "LM", "LN", "LO", "LP", "LQ", "LR", "LS", "LT", "LU", "LV", "LW", "LX", "LY", "LZ", "MA", "MB", "MC", "MD", "ME", "MF", "MG", "MH", "MI", "MJ", "MK", "ML", "MM", "MN", "MO", "MP", "MQ", "MR", "MS", "MT", "MU", "MV", "MW", "MX", "MY", "MZ", "NA", "NB", "NC", "ND", "NE", "NF", "NG", "NH", "NI", "NJ", "NK", "NL", "NM", "NN", "NO", "NP", "NQ", "NR", "NS", "NT", "NU", "NV", "NW", "NX", "NY", "NZ", "OA", "OB", "OC", "OD", "OE", "OF", "OG", "OH", "OI", "OJ", "OK", "OL", "OM", "ON", "OO", "OP", "OQ", "OR", "OS", "OT", "OU", "OV", "OW", "OX", "OY", "OZ", "PA", "PB", "PC", "PD", "PE", "PF", "PG", "PH", "PI", "PJ", "PK", "PL", "PM", "PN", "PO", "PP", "PQ", "PR", "PS", "PT", "PU", "PV", "PW", "PX", "PY", "PZ", "QA", "QB", "QC", "QD", "QE", "QF", "QG", "QH", "QI", "QJ", "QK", "QL", "QM", "QN", "QO", "QP", "QQ", "QR", "QS", "QT", "QU", "QV", "QW", "QX", "QY", "QZ", "RA", "RB", "RC", "RD", "RE", "RF", "RG", "RH", "RI", "RJ", "RK", "RL", "RM", "RN", "RO", "RP", "RQ", "RR", "RS", "RT", "RU", "RV", "RW", "RX", "RY", "RZ", "SA", "SB", "SC", "SD", "SE", "SF", "SG", "SH", "SI", "SJ", "SK", "SL", "SM", "SN", "SO", "SP", "SQ", "SR", "SS", "ST", "SU", "SV", "SW", "SX", "SY", "SZ", "TA", "TB", "TC", "TD", "TE", "TF", "TG", "TH", "TI", "TJ", "TK", "TL", "TM", "TN", "TO", "TP", "TQ", "TR", "TS", "TT", "TU", "TV", "TW", "TX", "TY", "TZ", "UA", "UB", "UC", "UD", "UE", "UF", "UG", "UH", "UI", "UJ", "UK", "UL", "UM", "UN", "UO", "UP", "UQ", "UR", "US", "UT", "UU", "UV", "UW", "UX", "UY", "UZ", "VA", "VB", "VC", "VD", "VE", "VF", "VG", "VH", "VI", "VJ", "VK", "VL", "VM", "VN", "VO", "VP", "VQ", "VR", "VS", "VT", "VU", "VV", "VW", "VX", "VY", "VZ", "WA", "WB", "WC", "WD", "WE", "WF", "WG", "WH", "WI", "WJ", "WK", "WL", "WM", "WN", "WO", "WP", "WQ", "WR", "WS", "WT", "WU", "WV", "WW", "WX", "WY", "WZ", "XA", "XB", "XC", "XD", "XE", "XF", "XG", "XH", "XI", "XJ", "XK", "XL", "XM", "XN", "XO", "XP", "XQ", "XR", "XS", "XT", "XU", "XV", "XW", "XX", "XY", "XZ", "YA", "YB", "YC", "YD", "YE", "YF", "YG", "YH", "YI", "YJ", "YK", "YL", "YM", "YN", "YO", "YP", "YQ", "YR", "YS", "YT", "YU", "YV", "YW", "YX", "YY", "YZ", "ZA", "ZB", "ZC", "ZD", "ZE", "ZF", "ZG", "ZH", "ZI", "ZJ", "ZK", "ZL", "ZM", "ZN", "ZO", "ZP", "ZQ", "ZR", "ZS", "ZT", "ZU", "ZV", "ZW", "ZX", "ZY", "ZZ", "AA", "AB", "AC", "AD", "AE", "AF", "AG", "AH", "AI", "AJ", "AK", "AL", "AM", "AN", "AO", "AP", "AQ", "AR", "AS", "AT", "AU", "AV", "AW", "AX", "AY", "AZ", "BA", "BB", "BC", "BD", "BE", "BF", "BG", "BH", "BI", "BJ", "BK", "BL", "BM", "BN", "BO", "BP", "BQ", "BR", "BS", "BT", "BU", "BV", "BW", "BX", "BY", "BZ", "CA", "CB", "CC", "CD", "CE", "CF", "CG", "CH", "CI", "CJ", "CK", "CL", "CM", "CN", "CO", "CP", "CQ", "CR", "CS", "CT", "CU", "CV", "CW", "CX", "CY", "CZ", "DA", "DB", "DC", "DD", "DE", "DF", "DG", "DH", "DI", "DJ", "DK", "DL", "DM", "DN", "DO", "DP", "DQ", "DR", "DS", "DT", "DU", "DV", "DW", "DX", "DY", "DZ", "EA", "EB", "EC", "ED", "EE", "EF", "EG", "EH", "EI", "EJ", "EK", "EL", "EM", "EN", "EO", "EP", "EQ", "ER", "ES", "ET", "EU", "EV", "EW", "EX", "EY", "EZ", "FA", "FB", "FC", "FD", "FE", "FF", "FG", "FH", "FI", "FJ", "FK", "FL", "FM", "FN", "FO", "FP", "FQ", "FR", "FS", "FT", "FU", "FV", "FW", "FX", "FY", "FZ", "GA", "GB", "GC", "GD", "GE", "GF", "GG", "GH", "GI", "GJ", "GK", "GL", "GM", "GN", "GO", "GP", "GQ", "GR", "GS", "GT", "GU", "GV", "GW", "GX", "GY", "GZ", "HA", "HB", "HC", "HD", "HE", "HF", "HG", "HH", "HI", "HJ", "HK", "HL", "HM", "HN", "HO", "HP", "HQ", "HR", "HS", "HT", "HU", "HV", "HW", "HX", "HY", "HZ", "IA", "IB", "IC", "ID", "IE", "IF", "IG", "IH", "II", "IJ", "IK", "IL", "IM", "IN", "IO", "IP", "IQ", "IR", "IS", "IT", "IU", "IV", "IW", "IX", "IY", "IZ", "JA", "JB", "JC", "JD", "JE", "JF", "JG", "JH", "JI", "JJ", "JK", "JL", "JM", "JN", "JO", "JP", "JQ", "JR", "JS", "JT", "JU", "JV", "JW", "JX", "JY", "JZ", "KA", "KB", "KC", "KD", "KE", "KF", "KG", "KH", "KI", "KJ", "KK", "KL", "KM", "KN", "KO", "KP", "KQ", "KR", "KS", "KT", "KU", "KV", "KW", "KX", "KY", "KZ", "LA", "LB", "LC", "LD", "LE", "LF", "LG", "LH", "LI", "LJ", "LK", "LM", "LN", "LO", "LP", "LQ", "LR", "LS", "LT", "LU", "LV", "LW", "LX", "LY", "LZ", "MA", "MB", "MC", "MD", "ME", "MF", "MG", "MH", "MI", "MJ", "MK", "ML", "MM", "MN", "MO", "MP", "MQ", "MR", "MS", "MT", "MU", "MV", "MW", "MX", "MY", "MZ", "NA", "NB", "NC", "ND", "NE", "NF", "NG", "NH", "NI", "NJ", "NK", "NL", "NM", "NN", "NO", "NP", "NQ", "NR", "NS", "NT", "NU", "NV", "NW", "NX", "NY", "NZ", "OA", "OB", "OC", "OD", "OE", "OF", "OG", "OH", "OI", "OJ", "OK", "OL", "OM", "ON", "OO", "OP", "OQ", "OR", "OS", "OT", "OU", "OV", "OW", "OX", "OY", "OZ", "PA", "PB", "PC", "PD", "PE", "PF", "PG", "PH", "PI", "PJ", "PK", "PL", "PM", "PN", "PO", "PP", "PQ", "PR", "PS", "PT", "PU", "PV", "PW", "PX", "PY", "PZ", "QA", "QB", "QC", "QD", "QE", "QF", "QG", "QH", "QI", "QJ", "QK", "QL", "QM", "QN", "QO", "QP", "QQ", "QR", "QS", "QT", "QU", "QV", "QW", "QX", "QY", "QZ", "RA", "RB", "RC", "RD", "RE", "RF", "RG", "RH", "RI", "RJ", "RK", "RL", "RM", "RN", "RO", "RP", "RQ", "RR", "RS", "RT", "RU", "RV", "RW", "RX", "RY", "RZ", "SA", "SB", "SC", "SD", "SE", "SF", "SG", "SH", "SI", "SJ", "SK", "SL", "SM", "SN", "SO", "SP", "SQ", "SR", "SS", "ST", "SU", "SV", "SW", "SX", "SY", "SZ", "TA", "TB", "TC", "TD", "TE", "TF", "TG", "TH", "TI", "TJ", "TK", "TL", "TM", "TN", "TO", "TP", "TQ", "TR", "TS", "TT", "TU", "TV", "TW", "TX", "TY", "TZ", "UA", "UB", "UC", "UD", "UE", "UF", "UG", "UH", "UI", "UJ", "UK", "UL", "UM", "UN", "UO", "UP", "UQ", "UR", "US", "UT", "UU", "UV", "UW", "UX", "UY", "UZ", "VA", "VB", "VC", "VD", "VE", "VF", "VG", "VH", "VI", "VJ", "VK", "VL", "VM", "VN", "VO", "VP", "VQ", "VR", "VS", "VT", "VU", "VV", "VW", "VX", "VY", "VZ", "WA", "WB", "WC", "WD", "WE", "WF", "WG", "WH", "WI", "WJ", "WK", "WL", "WM", "WN", "WO", "WP", "WQ", "WR", "WS", "WT", "WU", "WV", "WW", "WX", "WY", "WZ", "XA", "XB", "XC", "XD", "XE", "XF", "XG", "XH", "XI", "XJ", "XK", "XL", "XM", "XN", "XO", "XP", "XQ", "XR", "XS", "XT", "XU", "XV", "XW", "XX", "XY", "XZ", "YA", "YB", "YC", "YD", "YE", "YF", "YG", "YH", "YI", "YJ", "YK", "YL", "YM", "YN", "YO", "YP", "YQ", "YR", "YS", "YT", "YU", "YV", "YW", "YX", "YY", "YZ", "ZA", "ZB", "ZC", "ZD", "ZE", "ZF", "ZG", "ZH", "ZI", "ZJ", "ZK", "ZL", "ZM", "ZN", "ZO", "ZP", "ZQ", "ZR", "ZS", "ZT", "ZU", "ZV", "ZW", "ZX", "ZY", "ZZ", "AA", "AB", "AC", "AD", "AE", "AF", "AG", "AH", "AI", "AJ", "AK", "AL", "AM", "AN", "AO", "AP", "AQ", "AR", "AS", "AT", "AU", "AV", "AW", "AX", "AY", "AZ", "BA", "BB", "BC", "BD", "BE", "BF", "BG", "BH", "BI", "BJ", "BK", "BL", "BM", "BN", "BO", "BP", "BQ", "BR", "BS", "BT", "BU", "BV", "BW", "BX", "BY", "BZ", "CA", "CB", "CC", "CD", "CE", "CF", "CG", "CH", "CI", "CJ", "CK", "CL", "CM", "CN", "CO", "CP", "CQ", "CR", "CS", "CT", "CU", "CV", "CW", "CX", "CY", "CZ", "DA", "DB", "DC", "DD", "DE", "DF", "DG", "DH", "DI", "DJ", "DK", "DL", "DM", "DN", "DO", "DP", "DQ", "DR", "DS", "DT", "DU", "DV", "DW", "DX", "DY", "DZ", "EA", "EB", "EC", "ED", "EE", "EF", "EG", "EH", "EI", "EJ", "EK", "EL", "EM", "EN", "EO", "EP", "EQ", "ER", "ES", "ET", "EU", "EV", "EW", "EX", "EY", "EZ", "FA", "FB", "FC", "FD", "FE", "FF", "FG", "FH", "FI", "FJ", "FK", "FL", "FM", "FN", "FO", "FP", "FQ", "FR", "FS", "FT", "FU", "FV", "FW", "FX", "FY", "FZ", "GA", "GB", "GC", "GD", "GE", "GF", "GG", "GH", "GI", "GJ", "GK", "GL", "GM", "GN", "GO", "GP", "GQ", "GR", "GS", "GT", "GU", "GV", "GW", "GX", "GY", "GZ", "HA", "HB", "HC", "HD", "HE", "HF", "HG", "HH", "HI", "HJ", "HK", "HL", "HM", "HN", "HO", "HP", "HQ", "HR", "HS", "HT", "HU", "HV", "HW", "HX", "HY", "HZ", "IA", "IB", "IC", "ID", "IE", "IF", "IG", "IH", "II", "IJ", "IK", "IL", "IM", "IN", "IO", "IP", "IQ", "IR", "IS", "IT", "IU", "IV", "IW", "IX", "IY", "IZ", "JA", "JB", "JC", "JD", "JE", "JF", "JG", "JH", "JI", "JJ", "JK", "JL", "JM", "JN", "JO", "JP", "JQ", "JR", "JS", "JT", "JU", "JV", "JW", "JX", "JY", "JZ", "KA", "KB", "KC", "KD", "KE", "KF", "KG", "KH", "KI", "KJ", "KK", "KL", "KM", "KN", "KO", "KP", "KQ", "KR", "KS", "KT", "KU", "KV", "KW", "KX", "KY", "KZ", "LA", "LB", "LC", "LD", "LE", "LF", "LG", "LH", "LI", "LJ", "LK", "LM", "LN", "LO", "LP", "LQ", "LR", "LS", "LT", "LU", "LV", "LW", "LX", "LY", "LZ", "MA", "MB", "MC", "MD", "ME", "MF", "MG", "MH", "MI", "MJ", "MK", "ML", "MM", "MN", "MO", "MP", "MQ", "MR", "MS", "MT", "MU", "MV", "MW", "MX", "MY", "MZ", "NA", "NB", "NC", "ND", "NE", "NF", "NG", "NH", "NI", "NJ", "NK", "NL", "NM", "NN", "NO", "NP", "NQ", "NR", "NS", "NT", "NU", "NV", "NW", "NX", "NY", "NZ", "OA", "OB", "OC", "OD", "OE", "OF", "OG", "OH", "OI", "OJ", "OK", "OL", "OM", "ON", "OO", "OP", "OQ", "OR", "OS", "OT", "OU", "OV", "OW", "OX", "OY", "OZ", "PA", "PB", "PC", "PD", "PE", "PF", "PG", "PH", "PI", "PJ", "PK", "PL", "PM", "PN", "PO", "PP", "PQ", "PR", "PS", "PT", "PU", "PV", "PW", "PX", "PY", "PZ", "QA", "QB", "QC", "QD", "QE", "QF", "QG", "QH", "QI", "QJ", "QK", "QL", "QM", "QN", "QO", "QP", "QQ", "QR", "QS", "QT", "QU", "QV", "QW", "QX", "QY", "QZ", "RA", "RB", "RC", "RD", "RE", "RF", "RG", "RH", "RI", "RJ", "RK", "RL", "RM", "RN", "RO", "RP", "RQ", "RR", "RS", "RT", "RU", "RV", "RW", "RX", "RY", "RZ", "SA", "SB", "SC", "SD", "SE", "SF", "SG", "SH", "SI", "SJ", "SK", "SL", "SM", "SN", "SO", "SP", "SQ", "SR", "SS", "ST", "SU", "SV", "SW", "SX", "SY", "SZ", "TA", "TB", "TC", "TD", "TE", "TF", "TG", "TH", "TI", "TJ", "TK", "TL", "TM", "TN", "TO", "TP", "TQ", "TR", "TS", "TT", "TU", "TV", "TW", "TX", "TY", "TZ", "UA", "UB", "UC", "UD", "UE", "UF", "UG", "UH", "UI", "UJ", "UK", "UL", "UM", "UN", "UO", "UP", "UQ", "UR", "US", "UT", "UU", "UV", "UW", "UX", "UY", "UZ", "VA", "VB", "VC", "VD", "VE", "VF", "VG", "VH", "VI", "VJ", "VK", "VL", "VM", "VN", "VO", "VP", "VQ", "VR", "VS", "VT", "VU", "VV", "VW", "VX", "VY", "VZ", "WA", "WB", "WC", "WD", "WE", "WF", "WG", "WH", "WI", "WJ", "WK", "WL", "WM", "WN", "WO", "WP", "WQ", "WR", "WS", "WT", "WU", "WV", "WW", "WX", "WY", "WZ", "XA", "XB", "XC", "XD", "XE", "XF", "XG", "XH", "XI", "XJ", "XK", "XL", "XM", "XN", "XO", "XP", "XQ", "XR", "XS", "XT", "XU", "XV", "XW", "XX", "XY", "XZ", "YA", "YB", "YC", "YD", "YE", "YF", "YG", "YH", "YI", "YJ", "YK", "YL", "YM", "YN", "YO", "YP", "YQ", "YR", "YS", "YT", "YU", "YV", "YW", "YX", "YY", "YZ", "ZA", "ZB", "ZC", "ZD", "ZE", "ZF", "ZG", "ZH", "ZI", "ZJ", "ZK", "ZL", "ZM", "ZN", "ZO", "ZP", "ZQ", "ZR", "ZS", "ZT", "ZU", "ZV", "ZW", "ZX", "ZY", "ZZ", "AA", "AB", "AC", "AD", "AE", "AF", "AG", "AH", "AI", "AJ", "AK", "AL", "AM", "AN", "AO", "AP", "AQ", "AR", "AS", "AT", "AU", "AV", "AW", "AX", "AY", "AZ", "BA", "BB", "BC", "BD", "BE", "BF", "BG", "BH", "BI", "BJ", "BK", "BL", "BM", "BN", "BO", "BP", "BQ", "BR", "BS", "BT", "BU", "BV", "BW", "BX", "BY", "BZ", "CA", "CB", "CC", "CD", "CE", "CF", "CG", "CH", "CI", "CJ", "CK", "CL", "CM", "CN", "CO", "CP", "CQ", "CR", "CS", "CT", "CU", "CV", "CW", "CX", "CY", "CZ", "DA", "DB", "DC", "DD", "DE", "DF", "DG", "DH", "DI", "DJ", "DK", "DL", "DM", "DN", "DO", "DP", "DQ", "DR", "DS", "DT", "DU", "DV", "DW", "DX", "DY", "DZ", "EA", "EB", "EC", "ED", "EE", "EF", "EG", "EH", "EI", "EJ", "EK", "EL", "EM", "EN", "EO", "EP", "EQ", "ER", "ES", "ET", "EU", "EV", "EW", "EX", "EY", "EZ", "FA", "FB", "FC", "FD", "FE", "FF", "FG", "FH", "FI", "FJ", "FK", "FL", "FM", "FN", "FO", "FP", "FQ", "FR", "FS", "FT", "FU", "FV", "FW", "FX", "FY", "FZ", "GA", "GB", "GC", "GD", "GE", "GF", "GG", "GH", "GI", "GJ", "GK", "GL", "GM", "GN", "GO", "GP", "GQ", "GR", "GS", "GT", "GU", "GV", "GW", "GX", "GY", "GZ", "HA", "HB", "HC", "HD", "HE", "HF", "HG", "HH", "HI", "HJ", "HK", "HL", "HM", "HN", "HO", "HP", "HQ", "HR", "HS", "HT", "HU", "HV", "HW", "HX", "HY", "HZ", "IA", "IB", "IC", "ID", "IE", "IF", "IG", "IH", "II", "IJ", "IK", "IL", "IM", "IN", "IO", "IP", "IQ", "IR", "IS", "IT", "IU", "IV", "IW", "IX", "IY", "IZ", "JA", "JB", "JC", "JD", "JE", "JF", "JG", "JH", "JI", "JJ", "JK", "JL", "JM", "JN", "JO", "JP", "JQ", "JR", "JS", "JT", "JU", "JV", "JW", "JX", "JY", "JZ", "KA", "KB", "KC", "KD", "KE", "KF", "KG", "KH", "KI", "KJ", "KK", "KL", "KM", "KN", "KO", "KP", "KQ", "KR", "KS", "KT", "KU", "KV", "KW", "KX", "KY", "KZ", "LA", "LB", "LC", "LD", "LE", "LF", "LG", "LH", "LI", "LJ", "LK", "LM", "LN", "LO", "LP", "LQ", "LR", "LS", "LT", "LU", "LV", "LW", "LX", "LY", "LZ", "MA", "MB", "MC", "MD", "ME", "MF", "MG", "MH", "MI", "MJ", "MK", "ML", "MM", "MN", "MO", "MP", "MQ", "MR", "MS", "MT", "MU", "MV", "MW", "MX", "MY", "MZ", "NA", "NB", "NC", "ND", "NE", "NF", "NG", "NH", "NI", "NJ", "NK", "NL", "NM", "NN", "NO", "NP", "NQ", "NR", "NS", "NT", "NU", "NV", "NW", "NX", "NY", "NZ", "OA", "OB", "OC", "OD", "OE", "OF", "OG", "OH", "OI", "OJ", "OK", "OL", "OM", "ON", "OO", "OP", "OQ", "OR", "OS", "OT", "OU", "OV", "OW", "OX", "OY", "OZ", "PA", "PB", "PC", "PD", "PE", "PF", "PG", "PH", "PI", "PJ", "PK", "PL", "PM", "PN", "PO", "PP", "PQ", "PR", "PS", "PT", "PU", "PV", "PW", "PX", "PY", "PZ", "QA", "QB", "QC", "QD", "QE", "QF", "QG", "QH", "QI", "QJ", "QK", "QL", "QM", "QN", "QO", "QP", "QQ", "QR", "QS", "QT", "QU", "QV", "QW", "QX", "QY", "QZ", "RA", "RB", "RC", "RD", "RE", "RF", "RG", "RH", "RI", "RJ", "RK", "RL", "RM", "RN", "RO", "RP", "RQ", "RR", "RS", "RT", "RU", "RV", "RW", "RX", "RY", "RZ", "SA", "SB", "SC", "SD", "SE", "SF", "SG", "SH", "SI", "SJ", "SK", "SL", "SM", "SN", "SO", "SP", "SQ", "SR", "SS", "ST", "SU", "SV", "SW", "SX", "SY", "SZ", "TA", "TB", "TC", "TD", "TE", "TF", "TG", "TH", "TI", "TJ", "TK", "TL", "TM", "TN", "TO", "TP", "TQ", "TR", "TS", "TT", "TU", "TV", "TW", "TX", "TY", "TZ", "UA", "UB", "UC", "UD", "UE", "UF", "UG", "UH", "UI", "UJ", "UK", "UL", "UM", "UN", "UO", "UP", "UQ", "UR", "US", "UT", "UU", "UV", "UW", "UX", "UY", "UZ", "VA", "VB", "VC", "VD", "VE", "VF", "VG", "VH", "VI", "VJ", "VK", "VL", "VM", "VN", "VO", "VP", "VQ", "VR", "VS", "VT", "VU", "VV", "VW", "VX", "VY", "VZ", "WA", "WB", "WC", "WD", "WE", "WF", "WG", "WH", "WI", "WJ", "WK", "WL", "WM", "WN", "WO", "WP", "WQ", "WR", "WS", "WT", "WU", "WV", "WW", "WX", "WY", "WZ", "XA", "XB", "XC", "XD", "XE", "XF", "XG", "XH", "XI", "XJ", "XK", "XL", "XM", "XN", "XO", "XP", "XQ", "XR", "XS", "XT", "XU", "XV", "XW", "XX", "XY", "XZ", "YA", "YB", "YC", "YD", "YE", "YF", "YG", "YH", "YI", "YJ", "YK", "YL", "YM", "YN", "YO", "YP", "YQ", "YR", "YS", "YT", "YU", "YV", "YW", "YX", "YY", "YZ", "ZA", "ZB", "ZC", "ZD", "ZE", "ZF", "ZG", "ZH

© 2019 Rick Engineering Company



PLANT MATERIAL LEGEND

SYMBOL	BOTANICAL NAME COMMON NAME	QTY.	SIZE	H x W (CALIPER)	WATER USE TYPE	ADWR ANNUAL USE (GAL.)	ANNUAL USE (GAL.)	MONTHLY USE (GAL.)
TREES								
	PARKINSONIA FLORIDA BLUE PALO VERDE	2	15 GAL.	6' x 2' (.75")	2	5,702	11,404	950
	PARKINSONIA FLORIDA BLUE PALO VERDE	3	-	TRANSPLANT PER NPPP	2	5,702	17,106	1,426
	PARKINSONIA MICROPHYLLA FOOTHILLS PALO VERDE	5 4 4	15 GAL. 36" BOX 48" BOX	4' x 2' (.5") 4' x 2' (.5") 4' x 2' (.5")	1 1 1	1,754 1,754 1,754	8,770 7,016 7,016	731 585 585
	PARKINSONIA MICROPHYLLA FOOTHILLS PALO VERDE	18	-	TRANSPLANT PER NPPP	1	1,754	31,572	2,631
	PROSOPIS VELUTINA VELVET MESQUITE	5	15 GAL.	5.5' x 3' (.5")	2	5,702	29,510	6,177
	PROSOPIS VELUTINA VELVET MESQUITE	1	-	TRANSPLANT PER NPPP	2	5,702	5,702	475
TOTAL AT MATURITY (GAL.)							118,096	9,841

SIGNIFICANT VEGETATION MITIGATION

SIGNIFICANT VEGETATION: 2,530 SF GROUND COVER AREA
AMOUNT OF SV DISTURBED: 2,285 SF (90%)

SV TREES TO BE DESTROYED: (4)

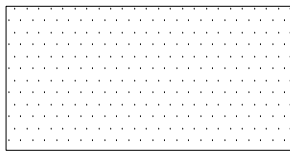
REQUIRED MITIGATION (2:1): (4) 36" BOX TREES
(4) 48" BOX TREES
(40) UNDERSTORY PLANTS

SPECIES BOTANICAL/COMMON NAME	TOTAL # VIABLE	TOTAL # NON-VIABLE	DISPOSITION			# OF MITIGATION PLANTS REQ'D.		# OF SUPPLEMENTAL PLANTS REQ'D.
			PIP	TOS	RFS	36" BOX	48" BOX	
CERCIDIUM MICROPHYLLUM/FOOTHILLS PALO VERDE	5	3	1	0	4	4	4	40

NON-SIGNIFICANT VEGETATION
MITIGATION CALCULATION TABLES

SPECIES BOTANICAL/COMMON NAME	TOTAL # NON-VIABLE/ NON- SALVAGEABLE	TOTAL # VIABLE/ SALVAGEABLE	DISPOSITION			# OF MITIGATION PLANTS REQ'D.	# OF SUPPLEMENTAL PLANTS REQ'D.
			PIP	TOS	RFS		
ACACIA CONSTRICTA/WHITETHORN ACACIA	44	17	0	14	3	3	15
ACACIA GREGGII/CATCLAW ACACIA	25	2	0	1	1	1	5
CARNEGIEA GIGANTEA/SAGUARO	0	1	0	1	0	0	0
CELTIS PALLIDA/DESERT HACKBERRY	32	6	0	3	3	3	15
CERCIDIUM FLORIDUM/BLUE PALO VERDE	16	3	0	3	0	0	0
CERCIDIUM MICROPHYLLUM/FOOTHILLS PALO VERDE	49	22	0	18	4	4	20
FEROCACTUS WISLEZENII/BARREL CACTUS	2	14	0	14	0	0	0
PROSOPIS VELUTINA/VELVET MESQUITE	12	1	0	1	0	0	0
TOTALS:	180	66	0	55	11	11	55

INORGANIC GROUNDCOVER



A MIN. 2" DEPTH LAYER OF DECORATIVE ROCK SHALL BE PLACED IN ALL PLANTING AREAS INDICATED ON THE PLANS. DO NOT PLACE DECORATIVE ROCK IN BASIN BOTTOMS. SIZE SHALL BE 3/4" SCREENED. COLOR SHALL BE 'DESERT GOLD' AVAILABLE THROUGH KALAMAZOO MATERIALS (520-575-9601), OR AS APPROVED BY OWNER.

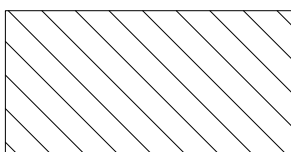
LANDSCAPE BOULDER SCHEDULE

BOULDERS SHALL BE PIT RUN 'APACHE BROWN' AS AVAILABLE THROUGH KALAMAZOO MATERIALS, OR AS APPROVED BY OWNER.

	W x H x L	QTY.
	3' x 3' x 3'	3
	2' x 2' x 2'	26

SYMBOL	BOTANICAL NAME COMMON NAME	QTY.	SIZE	WATER USE TYPE	ADWR ANNUAL USE (GAL.)	ANNUAL USE (GAL.)	MONTHLY USE (GAL.)
SHRUBS AND ACCENTS							
	ACACIA CONSTRICTA WHITETHORN ACACIA	3	5 GAL.	1	1,754	5,262	439
	ACACIA CONSTRICTA WHITETHORN ACACIA	14	TRANSPLANT PER NPPP	1	1,754	24,556	2,046
	ACACIA GREGGII CATCLAW ACACIA	7	5 GAL.	1	1,754	12,278	1,023
	ACACIA GREGGII CATCLAW ACACIA	1	TRANSPLANT PER NPPP	1	1,754	1,754	146
	CALLIANDRA ERIOPHYLLA FAIRY DUSTER	29	5 GAL.	1	70	2,030	169
	CARNEGIA GIGANTEA SAGUARO	6	3' SPEAR	1	2,741	16,446	1,371
	CARNEGIA GIGANTEA SAGUARO	1	TRANSPLANT PER NPPP	1	2,741	2,741	228
	CELTIS PALLIDA DESERT HACKBERRY	5	5 GAL.	2	634	3,170	264
	CELTIS PALLIDA DESERT HACKBERRY	3	TRANSPLANT PER NPPP	2	634	1,902	159
	DASYLIRION WHEELERI DESERT SPOON	9	5 GAL.	1	110	990	83
	ENCELIA FARINOSA BRITTLE BUSH	59	5 GAL.	1	39	2,301	192
	ERICAMERIA LARICIFOLIA TURPENTINE BUSH	19	5 GAL.	1	70	1,330	111
	FEROCACTUS WISLIZENII BARREL CACTUS	14	TRANSPLANT PER NPPP	1	10	140	12
	HESPERALOE PARVIFLORA RED YUCCA	27	5 GAL.	1	70	1,890	158
	JUSTICIA CALIFORNICA CHUPAROSA	35	5 GAL.	2	158	5,530	461
	MUHLENBERGIA EMERSLEYI BULL GRASS	38	5 GAL.	1	110	4,180	348
	OPUNTIA VIOLACEA VAR. SANTA RITA SANTA RITA PRICKLY PEAR CACTUS	11	5 GAL.	1	158	1,738	145
	OPUNTIA BIGELOVII TEDDY BEAR CHOLLA	7	5 GAL.	1	158	1,106	92
TOTAL AT MATURITY (GAL.)						88,564	7,380

NON-IRRIGATED HYDROSEED MIX



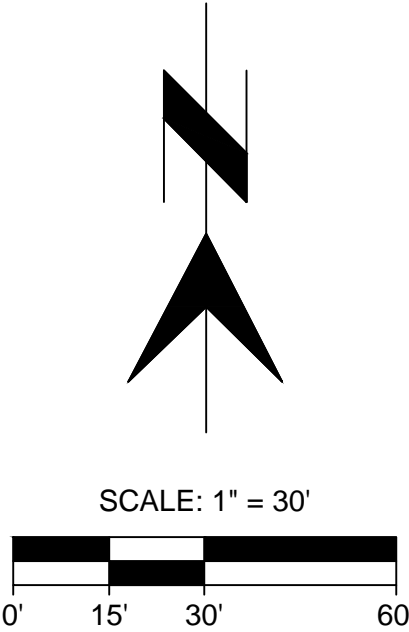
SPECIES	PLS RATE LBS./ACRE
AMBROSIA DELTOIDEA, TRIANGLE LEAF BURSAGE	2.0
ARISTIDA PURPUREA, PURPLE THREE-AWN	1.0
ATRIPLEX CANESCENS, FOUR-WING SALTBUUSH	2.0
BAHIA ABSINTHIFOLIA, DESERT BAHIA	1.0
BAILEYA MULTIRADIATA, DESERT MARIGOLD	1.5
BOTHRIOCHLOA BARBINODIS, CANE BEARDGRASS	1.0
BOUTELOUA CURTIPENDULA, SIDE-OATS GRAMA	1.0
BOUTELOUA BARBATA, SIX WEEKS GRAMA	1.0
ENCELIA FARINOSA, BRITTLEBUSH	2.0
HAPLOPAPPUS LARICIFOLIUS, TURPENTINE BUSH	1.0
KALLSTROEMIA GRANDIFLORA, ARIZONA POPPY	1.0
LEPTOCHLOA DUBIA, GREEN SPRANGLETOP	1.0
LUPINUS SPARSIFLORUS, DESERT LUPINE	1.0
PENSTEMON PARRYI, DESERT PENSTEMON	1.5
PLANTAGO INSULARIS, INDIAN WHEAT	1.5
PROBOSCIDEA PARVIFLORA, DEVIL'S CLAW	1.0
SENNA COVESII, DESERT SENNA	1.0
SPHAERALCEA AMBIGUA, DESERT GLOBE-MALLOW	2.0
SPOROBOLUS CRYPTANDRUS, SAND DROPSEED	1.0
TOTAL LBS./ACRE: 24.5 TOTAL	

NOTES:
SLURRY MIX FOR NATIVE SEED APPLICATION SHALL
CONSIST OF THE FOLLOWING:
SEED =LBS/ACRE PER SEED MIX
WOOD FIBER MULCH =2000 LBS/ACRE
AMMONIUM PHOSPHATE FERTILIZER (16-20-0) =200 LBS/ACRE

AREA TO BE SEEDED SHALL BE THOROUGHLY TILLED PRIOR TO APPLICATION OF SLURRY MIX. TILLING OPERATIONS SHALL BE PERFORMED SO AS NOT TO DISTURB ADJACENT AREAS OF NATIVE VEGETATION.

THIS SEED MIX WILL NOT BE IRRIGATED. APPLICATION OF SEED MIX SHALL COINCIDE WITH PERIODS OF SEASONAL RAIN (JULY-AUGUST OR NOVEMBER-DECEMBER) IN ORDER TO ENCOURAGE GERMINATION.

TOTAL WATER USE AT MATURITY	ANNUAL USE (GAL.)	MONTHLY USE (GAL.)
TREES	118,096	9,841
SHRUBS	89,344	7,445
TOTAL	207,440	17,286



OV1801921
OV1600944, OV12-03-20
RIVERS EDGE (MELCOR) PLANNED AREA DEVELOPMENT #7

L-03



3945 EAST FORT LOWELL ROAD - SUITE 111
TUCSON, AZ 85712
520.795.1000
(FAX) 520.322.9556
rickengineering.com
RICK
ENGINEERING COMPANY
Tucson
Phoenix - San Diego - Sacramento - Riverside - Orange - San Jose - Chicago - Minneapolis

FINAL LANDSCAPE PLAN FOR:
RIVER'S EDGE
LOTS 103-123

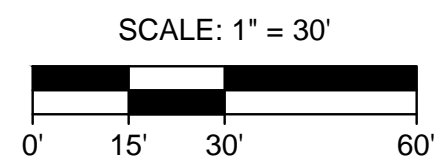
1901060

HORIZ : N/A
VERT : N/A

SHEET 3 OF 12

OV #1901060 PERMIT #2402455

NOTE: VEGETATION LOCATED IN BUFFERYARDS
AND COMMON AREAS SHALL NOT RECEIVE
IRRIGATION AFTER FIVE (5) YEARS FROM THE
CERTIFICATE OF OCCUPANCY DATE.



OV1801921
OV1600944, OV12-03-20
RIVERS EDGE (MELCOR) PLANNED AREA DEVELOPMENT #7

SHEET 5 OF 12

[illegible]

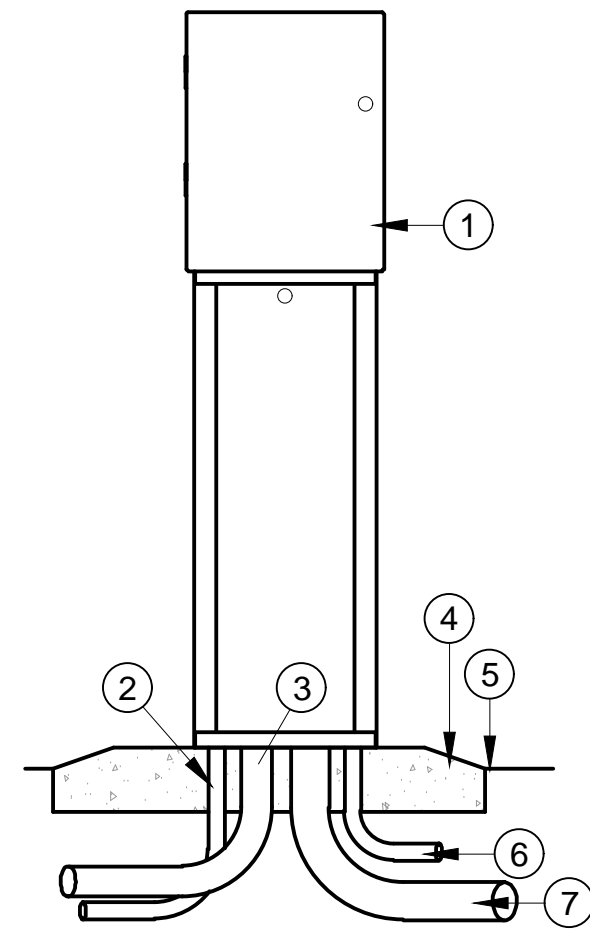
Contact Arizona 811 at least two full working days before you begin excavation

ARIZONA811
TOLL FREE 1-877-486-8111

Call 811 or click Arizona811.com

C:\Users\mfellinger\appdata\local\temp\AcPublish_0604\1101A LANDSCAPE PLAN.dwg Plotted: Dec 10, 2019

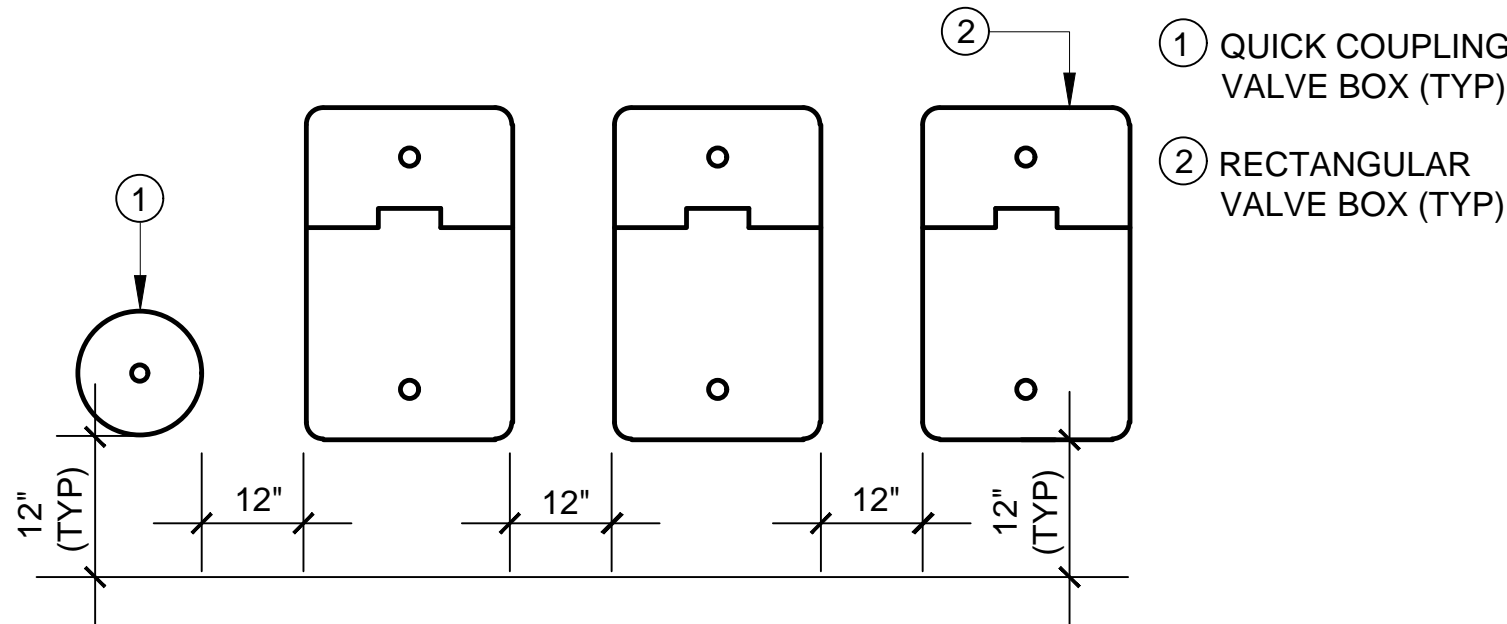
OV #1901060 PERMIT #2102155 TC



- 1 ENCLOSURE AND AUTOMATIC CONTROLLER PER IRRIGATION LEGEND
- 2 3/4" POWER CONDUIT: SIZE, TYPE, DEPTH PER LOCAL CODE
- 3 GROUND WIRE CONDUIT, MIN. 1-1/2". GROUND PER ASIC GUIDELINES
- 4 6" THICK FORMED AND POURED-IN-PLACE CONCRETE BASE
- 5 FINISH GRADE
- 6 CONDUIT FOR GCBL WIRING
- 7 CONDUIT FOR DECODER WIRES

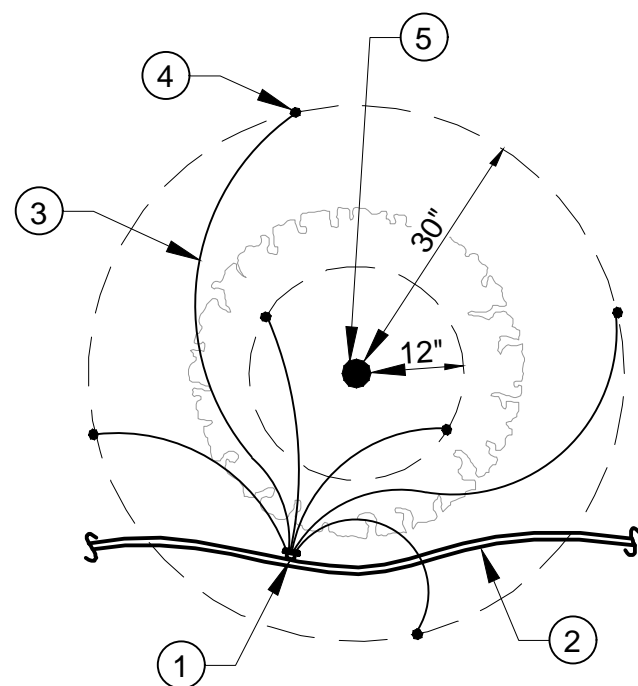
NOTES:
1. SEE INSTRUCTION MANUAL FOR MOUNTING INSTRUCTIONS.
2. ALL WIRING SHALL BE INSTALLED PER LOCAL CODES.
3. 120 VOLT POWER TO BE SUPPLIED BY OWNER.

A IRRIGATION CONTROLLER NOT TO SCALE



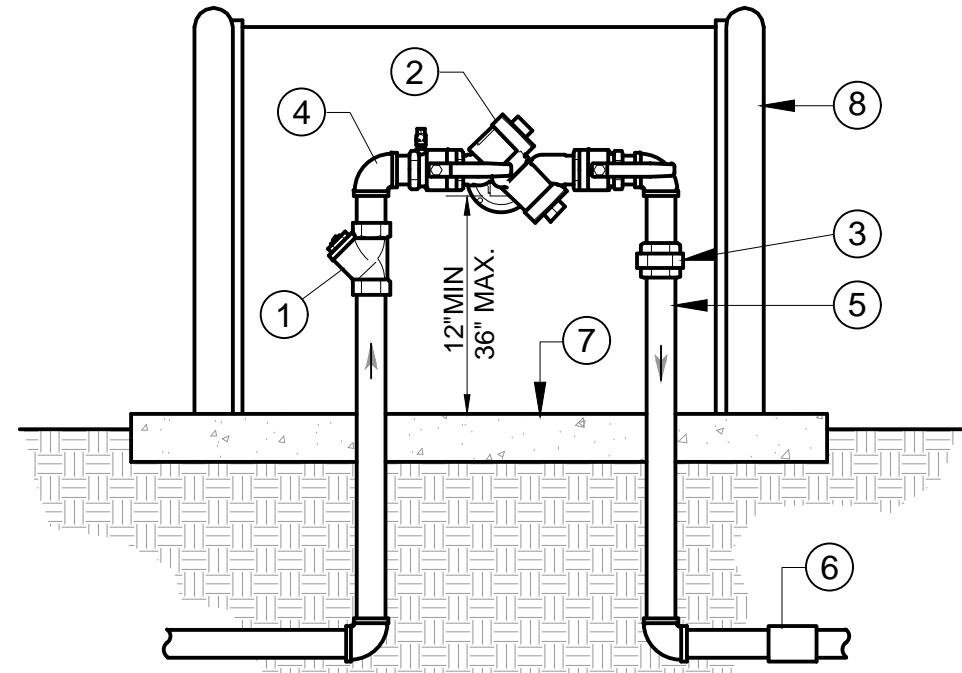
NOTES:
1. VALVE BOXES SHALL BE LABELED BY HOT IRON BRANDING OR ALUMINUM ASPHALT BASED WATERPROOF PAINT.
2. CONTROL VALVES SHALL BE INSTALLED TO ALLOW ORDERLY ARRANGEMENT OF VALVE BOXES.
3. LOCATE VALVE ASSEMBLIES IN SHRUB OR GROUND COVER AREAS WHEN POSSIBLE.
4. LOCATION OF VALVE ASSEMBLIES SHALL BE STAKED FOR APPROVAL BY LANDSCAPE ARCHITECT PRIOR TO INSTALLATION.
5. CENTER VALVE BOXES OVER VALVE ASSEMBLY TO FACILITATE ACCESS AND MAINTENANCE.
6. SET VALVE BOXES AT EQUAL ELEVATIONS WITH TOPS AT FINISH GRADE IN TURF AREAS OR 3" ABOVE FINISH GRADE IN SHRUB/GROUND COVER AREAS.
7. VALVE BOXES SHALL BE SET PARALLEL TO EACH OTHER AND PERPENDICULAR TO EDGE OF AREA.
8. DO NOT DEFORM OR COLLAPSE VALVE BOX BY EXCESSIVE SOIL COMPACTING AROUND BOX.
9. ON RECYCLED SYSTEMS ALL VALVE BOXES AND QUICK COUPLING VALVES SHALL BE CLEARLY COLORED PURPLE.

E VALVE BOX LAYOUT NOT TO SCALE



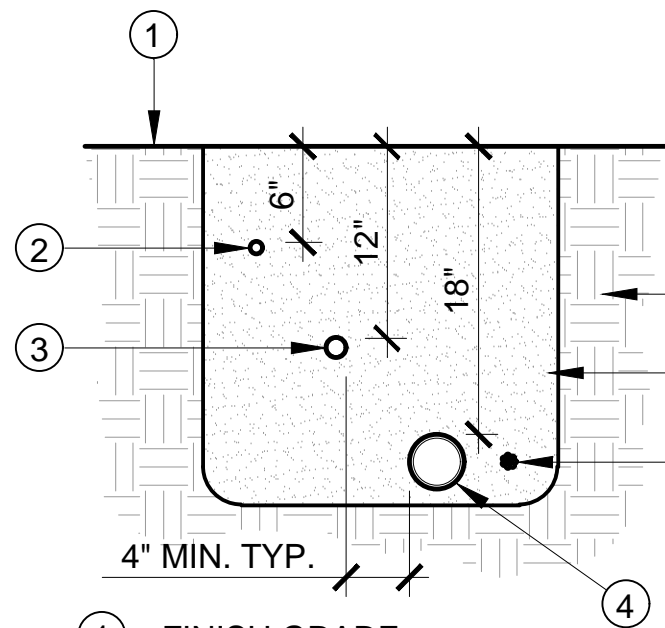
- 1 MULTI-OUTLET DRIP EMITTER
- 2 3/4" POLYETHYLENE LATERAL
- 3 1/4" DISTRIBUTION TUBING
- 4 DISCHARGE POINT, TO BE 1" ABOVE FINISH GRADE
- 5 TREE TRUNK

I EMITTER PLACEMENT @ TREES NOT TO SCALE



- 1 BRASS WYE STRAINER (LINE SIZE).
- 2 REDUCED PRESSURE BACKFLOW DEVICE WITH 2 BALL VALVES, REFER TO PLAN FOR TYPE AND SIZE
- 3 BRASS UNION
- 4 BRASS ELL (TYPICAL)
- 5 BRASS NIPPLE, TYPICAL
- 6 PVC MALE ADAPTER
- 7 3" THICK CONCRETE PAD. WRAP PIPES W/ 10 MIL. TAPE. SATURATE AND COMPACT SUB-GRADE TO 90% PRIOR TO POUR.
- 8 ENCLOSURE PER LEGEND.

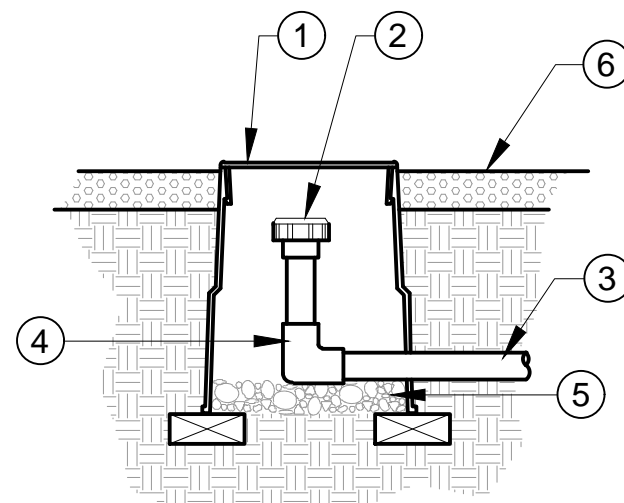
B BACKFLOW PREVENTION DEVICE NOT TO SCALE



- 1 FINISH GRADE
- 2 POLYETHYLENE LATERAL LINE OR LANDSCAPE DRIPLINE.
- 3 PVC LATERAL LINE
- 4 PVC MAINLINE
- 5 DIRECT BURIAL LOW VOLTAGE CONTROL WIRES, BUNDLE AT 10 FT. O.C., BURY AT SAME DEPTH AS MAINLINE
- 6 CLEAN BACKFILL, SATURATE AND COMPACT TO 90%
- 7 UNDISTURBED SOIL

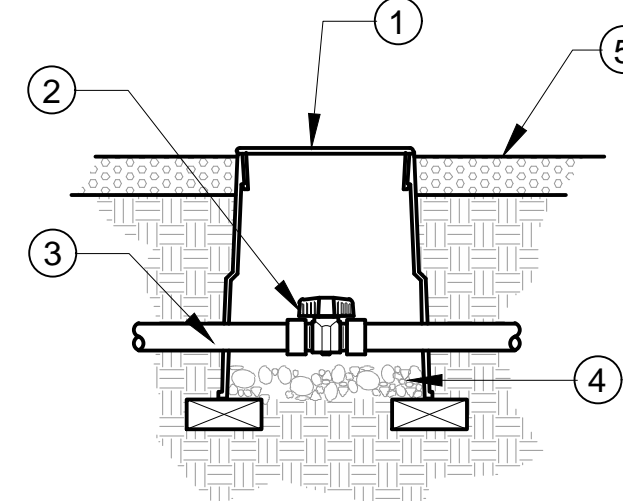
NOTE: EXTEND SLEEVE ENDS 24" BEYOND BACK OF CURB, WALK, OR PAVEMENT EDGE. A CONTINUOUS MAGNETIC MARKING TAPE SHALL BE PLACED 12 INCHES BELOW FINISHED GRADE ABOVE THE SLEEVE. AT ROAD CROSSINGS, THE CURB SHALL BE MARKED BY A STAMPED LABEL "I" (IRRIGATION SYSTEM). SLEEVE ENDS SHALL BE COVERED WITH HEAVY DUTY TAPE TO PREVENT SOIL FROM ENTERING SLEEVES UPON BACK FILLING.

F TRENCHING AND SLEEVING NOT TO SCALE



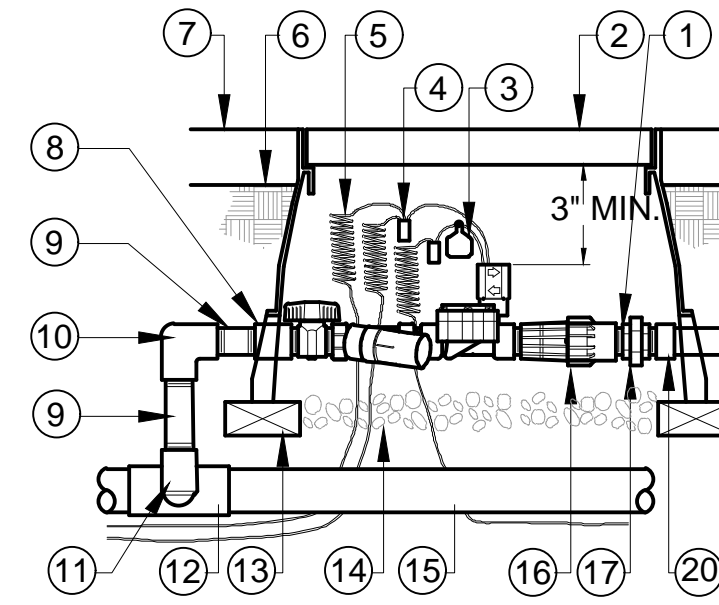
- 1 6" ROUND VALVE BOX
- 2 FLUSH CAP
- 3 3/4" POLYETHYLENE LATERAL
- 4 COMPRESSION FIT ELBOW
- 5 3" MIN. DEPTH OF 3/4" WASHED GRAVEL
- 6 FINISH GRADE

J END FLUSH CAP NOT TO SCALE



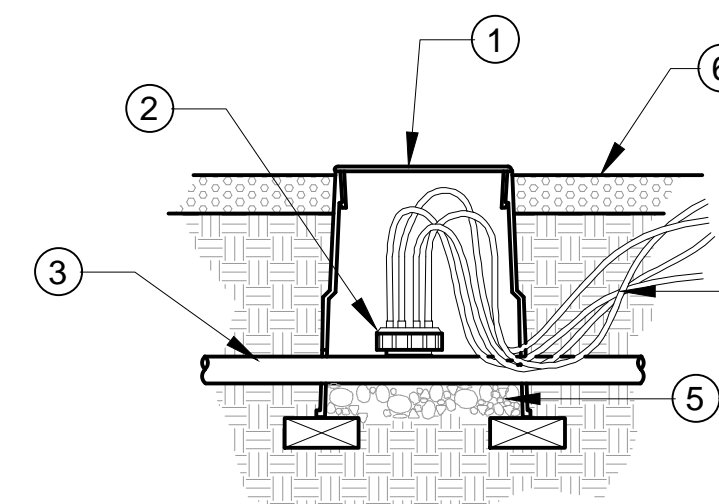
- 1 6" ROUND VALVE BOX
- 2 BALL VALVE PER LEGEND
- 3 LATERAL LINE
- 4 3" MIN. DEPTH OF 3/4" WASHED GRAVEL
- 5 FINISH GRADE OF DG.

C PVC BALL VALVE NOT TO SCALE



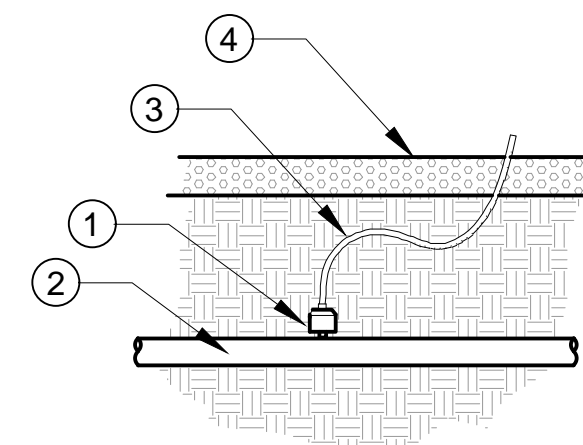
- 1 PVC SCH. 80 NIPPLE (CLOSE)
- 2 VALVE BOX W/ COVER: 24" SIZE
- 3 ID TAG
- 4 WATER PROOF CONNECTION (1 OF 2)
- 5 30-INCH LINEAR LENGTH OF WIRE, COILED
- 6 FINISH GRADE
- 7 TOP OF MULCH
- 8 PVC SCH. 40 COUPLING
- 9 PVC SCH. 80 NIPPLE (LENGTH AS REQ'D)
- 10 PVC SCH. 40 ELL
- 11 PVC SCH. 80 NIPPLE (2" LENGTH, HIDDEN) AND PVC SCH. 40 ELL
- 12 PVC SCH. 40 TEE OR ELL
- 13 BRICK (1 OF 4)
- 14 3" MIN. DEPTH OF 3/4" WASHED GRAVEL
- 15 PVC MAINLINE, SIZE PER PLANS
- 16 DRIP VALVE ASSEMBLY PER LEGEND
- 17 PVC SCH. 80 UNION FOR SERVICING ASSEMBLY
- 20 PVC SCH. 40 MALE ADAPTER

D REMOTE CONTROL VALVE (DRIP) NOT TO SCALE



- 1 6" ROUND VALVE BOX
- 2 MULTI-OUTLET DRIP EMITTER PER LEGEND
- 3 3/4" POLYETHYLENE LATERAL
- 4 1/4" DISTRIBUTION TUBING
- 5 3" MIN. DEPTH OF 3/4" WASHED GRAVEL
- 6 FINISH GRADE

G MULTI-OUTLET DRIP EMITTER NOT TO SCALE



- 1 SINGLE OUTLET DRIP EMITTER PER LEGEND
- 2 3/4" POLYETHYLENE LATERAL
- 3 1/4" DISTRIBUTION TUBING
- 4 FINISH GRADE

H SINGLE OUTLET DRIP EMITTER NOT TO SCALE



3945 EAST FORT LOVELL ROAD - SUITE 111
TUCSON, AZ 85712
520.795.1000
(FAX) 520.322.9556
rickengineering.com
rickengineering.com
Tucson
Phoenix San Diego Sacramento Riverside Chicago San Jose Dallas
RICK ENGINEERING COMPANY

FINAL LANDSCAPE PLAN FOR:
RIVER'S EDGE
LOTS 103-123
LOTS 103-123 AND COMMON AREAS 'A' & 'B-1' - B-3"
BEING A PORTION OF THE SOUTHEAST QUARTER OF SECTION 12,
TOWNSHIP 12 SOUTH, RANGE 13 EAST, GILA & SALT RIVER MERIDIAN,
TOWN OF ORO VALLEY, PIMA COUNTY, ARIZONA.

1901060

HORIZ : N/A

VERT : N/A

SHEET 8 OF 12

OV #1901060 PERMIT #2402455

L-08

OV1801921
OV1600944, OV12-03-20
RIVERS EDGE (MELCOR) PLANNED AREA DEVELOPMENT #7

3.2.5.7. NUMBERING AND TAGGING: IDENTIFY DIRECT BURIAL CONTROL WIRES FROM AUTOMATIC VALVES TO TERMINAL STRIPS OF CONTROLLER AT TERMINAL STRIP BY TAGGING WIRE WITH NUMBER OF CONNECTED VALVES.

3.2.12.1. INSTALL DRIP IRRIGATION EMITTER AS DETAILED AND SHOWN ON PLANS.

END OF SECTION 02810

[illegible]

rick
ENGINEERING COMPANY
Tucson

3945 EAST FORT LOWELL ROAD - SUITE 111
TUCSON, AZ 85712
520.795.1000
(FAX) 520.322.6956

rickengineering.com
Phoenix • San Diego • Sacramento • Riverside • Orange • San Luis Obispo • Bakersfield
Tucson

JN 4914

DESIGNED BY: MEF	DATE: 12/19	CHECKED BY:	DATE:
DRAWN BY: MEF	DATE: 12/19	APPROVED BY:	DATE:

FINAL LANDSCAPE PLAN FOR:
RIVER'S EDGE
LOTS 103-123

LOTS 103-123 AND COMMON AREAS "A" & "B-1 - B-3"
BEING A PORTION OF THE SOUTHEAST QUARTER OF SECTION 12,
TOWNSHIP 12 SOUTH, RANGE 13 EAST, GLA & SALT RIVER MERIDIAN,
TOWN OF ORO VALLEY, PIMA COUNTY, ARIZONA.

1901060

SCALE	HORIZ : N/A
	VERT : N/A

SHEET 10 OF 12



