

GENERAL NOTES

- A SITE INSPECTION AND INVENTORY OF ALL TREES (3 INCH CALIPER OR GREATER) AND CACTI PER ORO VALLEY ZONING CODE SECTION 27.6.B.4. HAS BEEN CARRIED OUT.
- THIS PLAN SHOWS APPROXIMATE LOCATIONS OF NATIVE PLANTS SUBJECT TO THE CODE MENTIONED ABOVE. ALL NATIVE PLANTS SUBJECT TO INVENTORY PER CODE HAVE BEEN FLAGGED WITH COLORED RIBBON PER CODE. ALL NATIVE PLANTS SUBJECT TO INVENTORY HAVE BEEN INVENTORIED, MAPPED AND/OR DESCRIBED HEREIN.
- THIS PLAN IS SUBJECT TO THE REQUIREMENTS OF ORO VALLEY ZONING CODE 27.6.B
- THE SALVAGED VEGETATION PER THIS PLAN WILL BE WATERED WITH A DRIP IRRIGATION SYSTEM AND MAINTAINED ON SITE. TEMPORARY NURSERY SHALL BE IN CONFORMANCE WITH SECTION 27.6.B.4.j.
- SAGUAROS AND BARREL CACTI, ARE TO BE SALVAGED AND TRANSPLANTED ON-SITE. SAGUAROS AND BARREL CACTI, DESTROYED DURING TRANSPLANTING ARE TO BE REPLACED AT 1:1 RATIO OR AS DETERMINED BY THE ZONING INSPECTOR.
- SIGNIFICANT VEGETATION DESTROYED DURING CONSTRUCTION ARE TO BE REPLACED IN ACCORDANCE WITH SIGNIFICATION VEGETATION MITIGATION TABLE 27-1.
- PRIOR TO ANY SITE DISTURBANCE, THE AREAS DESIGNATED TO REMAIN IN PLACE SHALL BE FENCED OR TAPED OFF FOR PROTECTION DURING THE GRUBBING AND GRADING OPERATIONS.
- SALVAGE OPERATIONS SHALL NOT COMMENCE UNTIL THE ZONING INSPECTOR HAS PERFORMED AN INSPECTION AND GIVEN APPROVAL TO BE SALVAGED.
- NON-COMPLIANCE WITH THE APPROVED NATIVE PLANT PRESERVATION PLAN AND OR DESTRUCTION OF PROTECTED PLANTS SHALL RESULT IN FINES IN ACCORDANCE WITH SECTION 27.6.B.6 OF THE OVZCR.
- ALL SALVAGED MATERIALS SHALL BE UTILIZED IN THE CORRESPONDING PROJECT LANDSCAPE PLAN.
- TAGS (PLASTIC TAPE) SHALL BE COLOR-CODED ACCORDING TO THE FOLLOWING SCHEDULE:
EXISTING NATIVE PLANTS TO BE TRANSPLANTED ON SITE.....BLUE (TOS)
EXISTING NATIVE PLANTS TO BE REMOVED.....RED (RFS)
EXISTING NATIVE PLANTS TO REMAIN IN PLACE.....WHITE (PIP)
- PLANT LOCATIONS WERE DETERMINED WITH THE ASSISTANCE OF A GLOBAL POSITIONING SYSTEM. THIS SYSTEM IS ACCURATE TO WITHIN APPROXIMATELY THREE METERS. SUBSEQUENTLY, THE PLANT SYMBOLS SHOWN MAY NOT LIE DIRECTLY ON THE PLANT AS SHOWN ON THE AERIAL PHOTOGRAPH.
- ANY SPADED OR BOXED TREE TRANSPLANTED ON SITE THAT DIES DUE TO NEGLECT OR LACK OF MAINTENANCE SHALL BE REPLACED WITH THE SAME SIZE AND SPECIES OF THE ORIGINAL SALVAGED TREE, AS REQUIRED BY THE SALVAGE PLAN.
- NO SALVAGE OF PLANTS REGULATED BY THE ENDANGERED SPECIES ACT AND/OR THE ARIZONA NATIVE PLANT LAW MAY OCCUR WITHOUT THE ISSUANCE OF THE APPROPRIATE PERMIT BY THE STATE DEPARTMENT OF AGRICULTURE.
- MITIGATION OF SIGNIFICANT VEGETATION SHALL BE IN ACCORDANCE WITH TABLE 27-1 MITIGATION OF SIGNIFICANT VEGETATION.
- ANY PLANT THAT MEETS THE SALVAGE CRITERIA IN SECTION 27.6.B.4 SHALL BE PRESERVED IN PLACE OR TRANSPLANTED ON-SITE. ANY PLANTS THAT MEET THE SALVAGE CRITERIA THAT ARE DESTROYED SHALL BE REPLACED ON A ONE-TO-ONE RATIO OF THE SAME SPECIES AND SIZE AS THAT DESTROYED. FIVE UNDERSTORY PLANTS FROM THE SUPPLEMENTAL ARIZONA DEPARTMENT OF WATER QUALITY NATIVE PLANT LIST WILL BE PLANTED FOR EVERY MITIGATED TREE.
- THE LIMITS OF GRADING SHALL BE STAKED IN THE FIELD, IN ACCORDANCE WITH SECTION 27.6.B.7.c.ii DISTURBANCE OUTSIDE THE APPROVED GRADING LIMITS SHALL NOT BE PERMITTED.
- A TEMPORARY NURSERY WILL NOT BE USED. PLANTS WILL BE TRANSPLANTED TO THEIR PERMANET LOCATIONS.
- REFER TO THE GRADING / CIVIL / AND LANDSCAPE PLANS FOR CONSISTENCY IN DEVELOPMENT.
- ADDITIONAL PLANTS MAY BE DEEMED SALVAGEABLE BY THE ZONING INSPECTOR, AND SHALL BE SALVAGED.
- EXISTING ZONING: RANCHO VISTOSO PAD
- GROSS AREA OF THIS DEVELOPMENT: 5.60 ± ACRES.
- TOTAL GRADED AREA: 5.38 ± ACRES.
- TOTAL UNDISTURBED AREA: 0.22 ± ACRES.

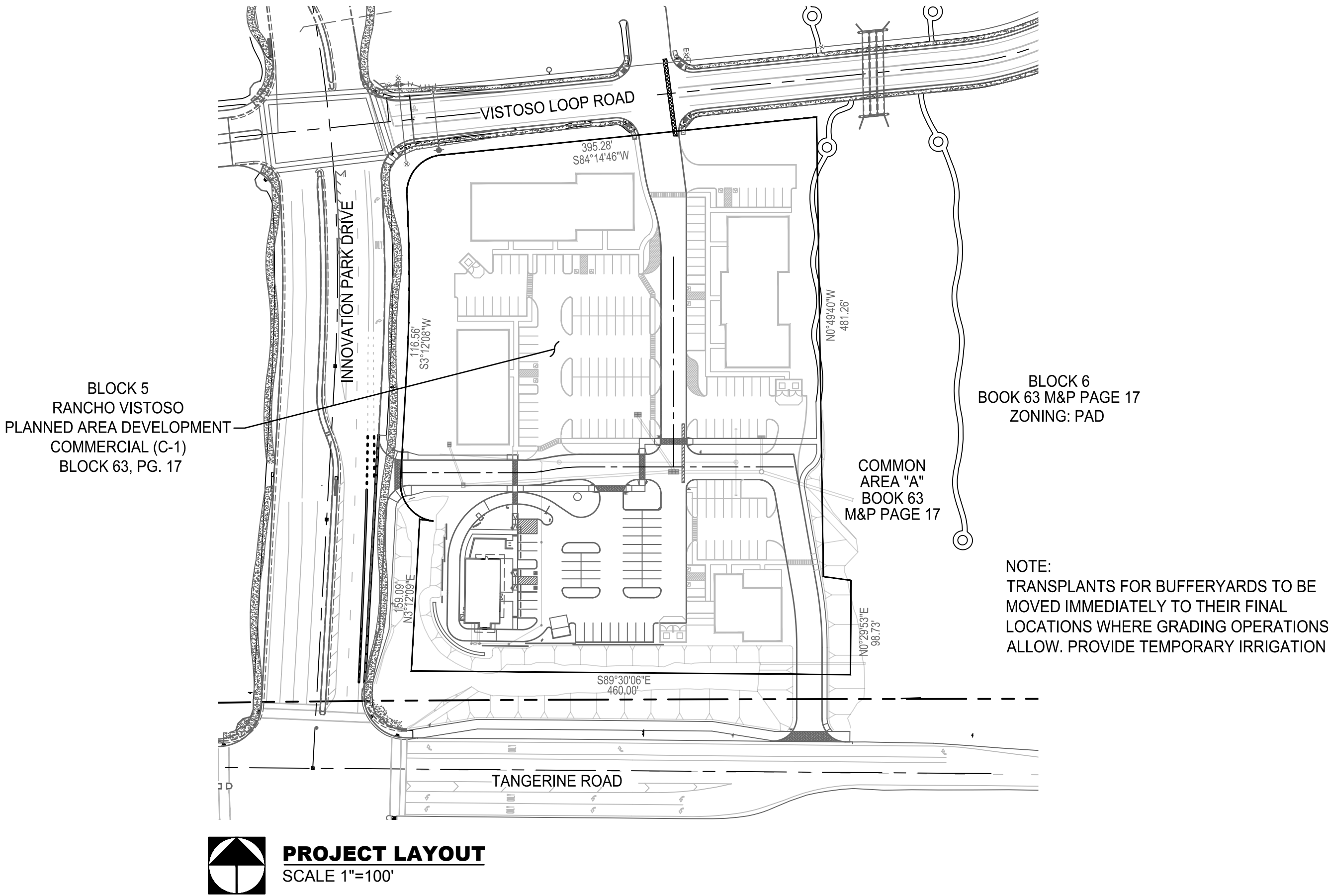
CRITERIA FOR REMOVAL

PLANTS DESIGNATED AS TO BE REMOVED/DESTROYED HAVE ONE OR MORE OF THE FOLLOWING CONDITIONS.

- PLANT HEALTH IS POOR TO MEDIUM WITH INFESTATIONS OR APPARENT DISEASES AND NOT EXPECTED TO SURVIVE FOR FIVE OR MORE YEARS.
- PLANT AGE SUGGESTS UNLIKELY CHANCE OF TRANSPLANT SURVIVAL.
- PLANT IS DAMAGED AND IS NOT CONDUCIVE TO BOX OR SPADE TRANSPLANTING (IRREGULAR BRANCHING).
- SOILS CANNOT BE EXCAVATED AND ARE NOT CAPABLE OF SUPPORTING A BOXED OR SPADED ROOT BALL.
- SURROUNDING TOPOGRAPHY DENIES ACCESS WITH THE APPROPRIATE EQUIPMENT NEEDED TO BOX OR SPADE AND REMOVE PLANT.
- ADJACENT PLANTS POSE A LIKELY INTERFERENCE WITH ROOT SYSTEMS OR INTERFERE WITH PLANT REMOVAL.
- THE OVERALL FORM AND CHARACTER IS NOT REPRESENTATIVE OF THE SPECIES AND IS NOT A VALUABLE SPECIMEN FOR LANDSCAPE OR HABITAT PURPOSES.

SITE RESOURCE INVENTORY
NATIVE PLANT PRESERVATION PLAN
INNOVATION CORPORATE CENTER BLOCK 5
RANCHO VISTOSO NEIGHBORHOOD 3

BLOCK 5 OF BOOK 63 PAGE 17
2300342



NATIVE PLANT SUMMARY

BOTANICAL NAME	COMMON NAME	BLUE RIBBON	RED RIBBON	WHITE RIBBON	TOTAL PER PLANT
		TRANSPLANT	REMOVE	PRESERVE IN PLACE	
ACACIA CONSTRICTA	WHITETHORN ACACIA	101	121	0	222
ACACIA GREGGII	CAT CLAW ACACIA	4	4	0	8
CARNEGIEA GIGANTEA	SAGUARO	2	0	0	2
CELTIS PALLIDA	DESERT HACKBERRY	13	10	0	23
CERCIDIUM FLORIDIUM	BLUE PALO VERDE	6	18	0	24
CERCIDIUM MICROPHYLLUM	FOOTHILL PALO VERDE	16	5	0	21
FEROCACTUS WISLIZENII	FISH-HOOK BARREL	7	3	0	10
PROSOPIS VELUTINA	MESQUITE	36	71	1	108
ZYZIPHUS OBTUSIFOLIA	GREYTHORN	3	3	0	6
TOTAL		188	235	1	424

NOTE: SOME TRANSPLANTS TO BE USED FOR THE PROPOSED STARBUCKS SITE

VEGETATION MITIGATION

- ACACIA CONSTRICTA TO BE MITIGATED PER DAMAGE BY 3RD PARTY OPERATOR
- 15 GALLON ACACIA CONSTRICTA (NURSERY STOCK) TO BE SUPPLEMENTED FOR DAMAGE PLANTS.

SIGNIFICANT VEGETATION MITIGATION

MITIGATION OF SIGNIFICANT VEGETATION SHALL BE IN A ACCORDANCE WITH SECTION 27.6.B.3.c
AMOUNT OF SIGNIFICANT VEGETATION = 3,620 ± SQ. FT.
AMOUNT OF SIGNIFICANT VEGETATION DISTURBED = 3,620 ± SQ. FT.
PERCENTAGE OF SIGNIFICANT VEGETATION DISTURBED = 100%

SIGNIFICANT VEGETATION REMOVED

(3) TREES	MITIGATION RATIO 2:1	REPLACEMENT TREES 12	UNDERSTORY VEGETATION REQUIRED (5 PER TREE)
(1) CERCIDIUM FLORIDIUM	[(1) 36" (1) 48"]	(6) 36" BOX TREES (50%)	60 UNDERSTORY PLANTS
(1) CERCIDIUM MICROPHYLLUM	[(1) 36" (1) 48"]	(6) 48" BOX TREES (50%)	
(4) PROSOPIS VELUTINA	[(4) 36" (4) 48"]		

SIGNIFICANT VEGETATION TO BE REMOVED

CERCIDIUM FLORIDIUM - CF64
CERCIDIUM MICROPHYLLUM - CM275

PROSOPIS VELUTINA - PV104
PV106
PV107

PV157

SIGNIFICANT VEGETATION TO BE TRANSPLANTED

PROSOPIS VELUTINA - PV367

APPROVAL

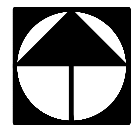
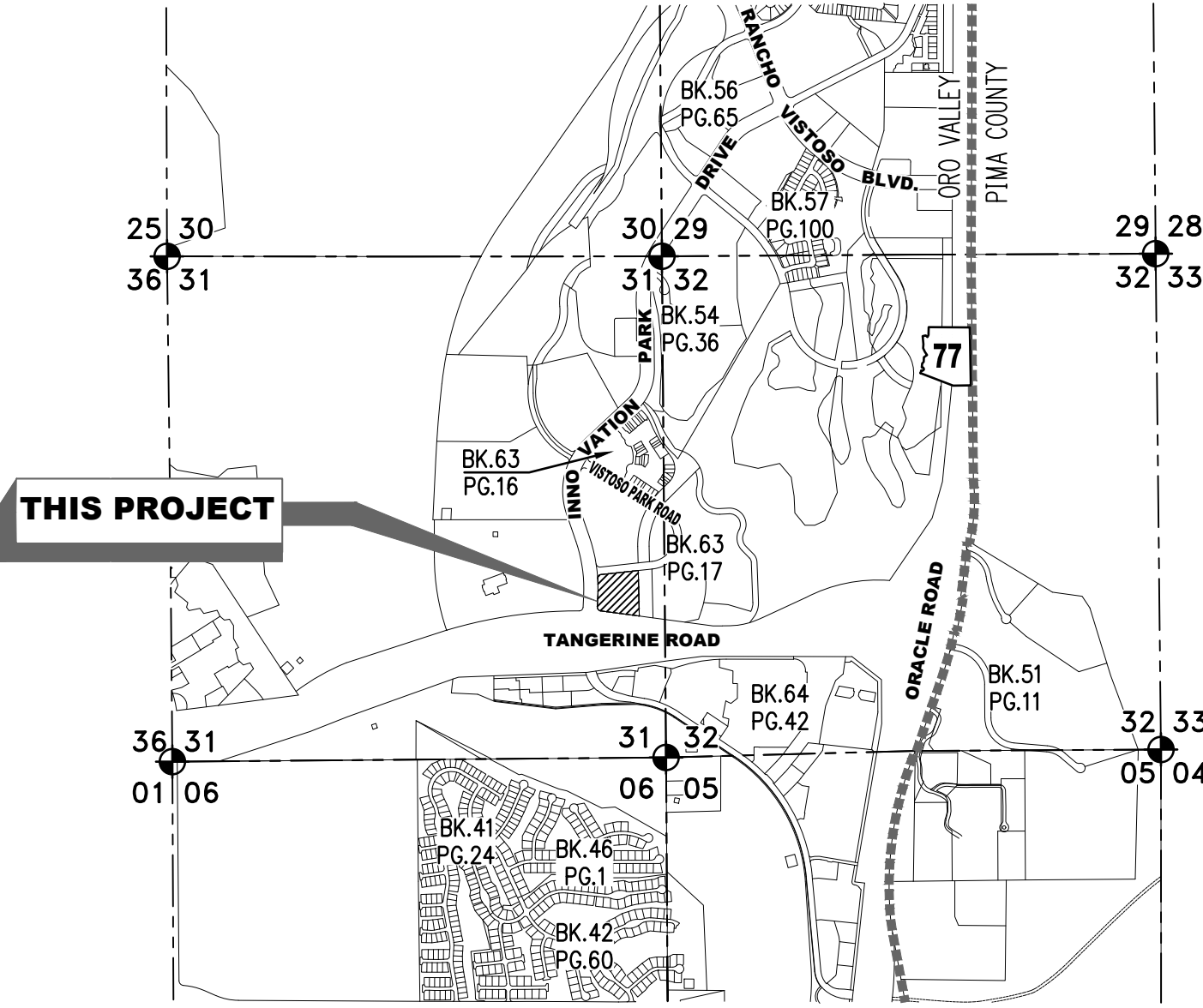
ANY PLANT DEEMED SALVAGEABLE BY THE ZONING INSPECTOR SHALL BE SALVAGED. TOWN OF ORO VALLEY NATIVE PLANT SALVAGE PLAN APPROVED BY:

PLANNING & ZONING ADMINISTRATOR

DATE

REFERENCE NUMBER:

2201099 G1500006 OV12-06-14B
2300167 OV112-025 OV1212-20
2300141 OV09-07-07



LOCATION MAP

PORTION OF SECTION 31
TOWNSHIP 11 SOUTH, RANGE 14 EAST
GILA & SALT RIVER MERIDIAN TOWN OF ORO VALLEY
PIMA COUNTY, ARIZONA

DEVELOPER

VW/VISTOSO DEVELOPMENT, INC.
6007 E. GRANT RD.
TUCSON, AZ 85712
(520) 722-9292
ATTN: NEIL SIMON
NSIMON@VENTUREWESTAZ.COM

ARCHITECT

EGLIN + BRESLER ARCHITECTS, P.C.
7391 E. TANQUE VERDE ROAD
TUCSON, AZ 85715
PHONE: (520) 885-4455
ATTN: EVAN S. EGLIN, AIA
EVANE@EGLINBRESLER.COM

ENGINEER

THE WLB GROUP, INC.
4444 E. BROADWAY BLVD.
TUCSON, AZ. 85711
PHONE: (520) 881-7480
ATTENTION: DAVID W. LITTLE, P.E.
DLITTLE@WLBGROUP.COM

LANDSCAPE ARCHITECT

THE WLB GROUP, INC.
4444 E. BROADWAY BLVD.
TUCSON, AZ. 85711
PHONE: (520) 881-7480
ATTENTION: GARY GRIZZLE
GGRIZZLE@WLBGROUP.COM

SHEET INDEX

SHEET 1 COVER SHEET
SHEET 2 AERIAL PHOTO
SHEET 3 NVENTORY

G1500006
SITE RESOURCE INVENTORY
NATIVE PLANT PRESERVATION PLAN
INNOVATION CORPORATE CENTER BLOCK 5
LOCATED IN A PORTION OF SECTION 31, TOWNSHIP 11 SOUTH, RANGE 14 EAST,
GILA & SALT RIVER MERIDIAN, PIMA COUNTY, ARIZONA
TOWN OF ORO VALLEY, PIMA COUNTY, ARIZONA



Engineering Planning Surveying
Landscape Architecture Urban Design
Offices located in Tucson, Phoenix and
Flagstaff, Arizona, and Las Vegas, Nevada.
4444 East Broadway
Tucson, Arizona (520) 881-7480

INNOVATION CORPORATE CENTER BLOCK 5
BLOCK 5 OF THE INNOVATION CORPORATE CENTER FINAL PLAT
BOOK 63, M&P PAGE 17, ORO VALLEY, ARIZONA

Sheet Title

SITE RESOURCE INVENTORY
NATIVE PLANT PRESERVATION PLAN
COVER SHEET

File:Q:\185050\VV-30 Inn Corp Ctr Block 5 Starbucks\02 Landscape\02 nppp block 5\185050 rv n3 block 5 nppp 1.dwg

No.

Date

Item

Scale

AS SHOWN

Job No.

185050-VW-30

Date

JULY 2024

Designed By

CB

Checked By

GLG



Sheet 1

of 3

ACACIA CONSTRICTA
WHITETHORN ACACIA (AC)

TYPE	TAG NUMBER	CALIPER (IN.)	HEIGHT (FT.)	CRITERIA FOR REMOVAL	RIBBON COLOR
AC	6	0	6.0		BLUE
AC	7	0	8.0	G poor form	RED
AC	11	0	6.0	G poor form	RED
AC	13	0	6.0	G poor form	RED
AC	14	0	12.0	G poor form	RED
AC	15	0	12.0	G poor form	RED
AC	18	0	6.0	E topo	RED
AC	21	0	6.0	G poor form	RED
AC	22	0	12.0	G poor form	RED
AC	25	0	6.0	A health	RED
AC	28	0	6.0	A health	RED
AC	29	0	6.0		BLUE
AC	31	0	8.0	A health	RED
AC	43	0	10.0	G poor form	RED
AC	46	0	10.0	G poor form	RED
AC	58	0	8.0		BLUE
AC	59	0	10.0		BLUE
AC	62	0	8.0	G poor form	RED
AC	63	0	8.0		BLUE
AC	72	0	10.0		BLUE
AC	73	0	10.0		BLUE
AC	74	0	10.0		BLUE
AC	75	0	8.0	F adjacent plant	RED
AC	77	0	6.0	F adjacent plant	RED
AC	78	0	8.0	G poor form	RED
AC	79	0	10.0		BLUE
AC	80	0	6.0	A health	RED
AC	81	0	8.0		BLUE
AC	82	0	8.0	G poor form	RED
AC	83	0	6.0		BLUE
AC	84	0	10.0		BLUE
AC	86	0	8.0		BLUE
AC	87	0	10.0	A health	RED
AC	88	0	6.0	A health	RED
AC	89	0	6.0		BLUE
AC	90	0	6.0	F adjacent plant	RED
AC	91	0	10.0	A health	RED
AC	92	0	8.0		BLUE
AC	93	0	10.0	F adjacent plant	RED
AC	94	0	10.0		BLUE
AC	95	0	12.0	G poor form	RED
AC	96	0	16.0	A health	RED
AC	97	0	10.0	E topo	RED
AC	98	0	8.0		BLUE
AC	99	0	8.0		BLUE
AC	100	0	8.0		BLUE
AC	101	0	6.0		BLUE
AC	102	0	8.0		BLUE
AC	117	0	8.0	E topo	RED
AC	126	0	6.0		BLUE
AC	127	0	8.0	G poor form	RED
AC	129	0	6.0		BLUE
AC	130	0	8.0	F adjacent plant	RED
AC	131	0	8.0	A health	RED
AC	132	0	8.0	A health	RED
AC	134	0	6.0		BLUE
AC	135	0	8.0		BLUE
AC	136	0	8.0		BLUE
AC	137	0	8.0	F adjacent plant	RED
AC	138	0	6.0	F adjacent plant	RED
AC	139	0	6.0	A health	RED
AC	141	0	6.0		BLUE
AC	142	0	6.0		BLUE
AC	143	0	6.0		BLUE
AC	144	0	6.0	F adjacent plant	RED
AC	145	0	8.0	A health	RED
AC	146	0	6.0		BLUE
AC	147	0	6.0	A health	RED
AC	148	0	6.0		BLUE
AC	149	0	6.0		BLUE
AC	153	0	8.0	A health	RED
AC	159	0	8.0	A health	RED
AC	160	0	6.0		BLUE
AC	161	0	6.0	E topo	RED
AC	162	0	6.0		BLUE
AC	163	0	8.0		BLUE
AC	164	0	8.0	F adjacent plant	RED
AC	165	0	8.0	G poor form	RED
AC	166	0	8.0	G poor form	RED
AC	167	0	6.0	G poor form	RED
AC	168	0	6.0	A health	RED
AC	169	0	8.0		BLUE
AC	170	0	8.0		BLUE
AC	171	0	6.0	F adjacent plant	RED
AC	172	0	8.0	A health	RED
AC	173	0	8.0		BLUE
AC	174	0	6.0		BLUE
AC	175	0	6.0	F adjacent plant	RED
AC	176	0	6.0	G poor form	RED
AC	177	0	6.0	F adjacent plant	RED
AC	178	0	6.0		BLUE
AC	179	0	6.0		BLUE
AC	180	0	6.0	A health	RED
AC	181	0	6.0		BLUE
AC	182	0	6.0		BLUE
AC	183	0	6.0	A health	RED
AC	184	0	8.0	G poor form	RED
AC	185	0	6.0		BLUE
AC	186	0	8.0		BLUE

AC	187	0	8.0	F adjacent plant	RED
AC	188	0	6.0		BLUE
AC	189	0	6.0		BLUE
AC	190	0	6.0	G poor form	RED
AC	191	0	6.0		BLUE
AC	192	0	6.0	G poor form	RED
AC	193	0	6.0	G poor form	RED
AC	196	0	8.0		BLUE
AC	197	0	6.0	A health	RED
AC	198	0	6.0		BLUE
AC	201	0	6.0	F adjacent plant	RED
AC	202	0	6.0		BLUE
AC	203	0	8.0		BLUE
AC	204	0	8.0		BLUE
AC	206	0	6.0	A health	RED
AC	207	0	8.0		BLUE
AC	208	0	8.0		BLUE
AC	210	0	6.0		BLUE
AC	211	0	6.0		BLUE
AC	213	0	6.0		BLUE
AC	214	0	6.0		BLUE
AC	215	0	8.0	A health	RED
AC	216	0	8.0	A health	RED
AC	217	0	8.0	A health	RED
AC	218	0	8.0	A health	RED
AC	219	0	8.0	A health	RED
AC	220	0	8.0	A health	RED
AC	221	0	8.0		BLUE
AC	222	0	8.0	A health	RED
AC	224	0	6.0		BLUE
AC	228	0	6.0	A health	RED
AC	229	0	10.0	A health	RED
AC	231	0	6.0	A health	RED
AC	234	0	6.0	A health	RED
AC	235	0	8.0	G poor form	RED
AC	236	0	8.0		BLUE
AC	238	0	6.0		BLUE
AC	239	0	8.0	A health	RED
AC	241	0	6.0	A health	RED
AC	243	0	6.0		BLUE
AC	244	0	6.0		BLUE
AC	245	0	6.0		BLUE
AC	246	0	6.0	G poor form	RED
AC	247	0	6.0	A health	RED
AC	248	0	6.0		BLUE
AC	249	0	6.0	G poor form	RED
AC	250	0	6.0		BLUE
AC	251	0	6.0		BLUE
AC	252	0	6.0		BLUE
AC	253	0	6.0		BLUE
AC	255	0	6.0	F adjacent plant	RED
AC	256	0	6.0	F adjacent plant	RED
AC	257	0	8.0	A health	RED
AC	258	0	6.0	F adjacent plant	RED
AC	259	0	6.0		BLUE
AC	260	0	8.0	F adjacent plant	RED
AC	261	0	6.0		BLUE
AC	262	0	6.0	A health	RED
AC	263	0	8.0		BLUE
AC	264	0	6.0		BLUE
AC	265	0	6.0		BLUE
AC	270	0	6.0	G poor form	RED
AC	271	0	6.0		BLUE
AC	276	0	8.0	G poor form	RED
AC	277	0	8.0		BLUE
AC	278	0	8.0	G poor form	RED
AC	279	0	10.0	G poor form	RED
AC	281	0	10.0		BLUE
AC	282	0	10.0	F adjacent plant	RED
AC	284	0	10.0	E topo	RED
AC	285	0	10.0		BLUE
AC	288	0	14.0	G poor form	RED
AC	289	0	10.0		BLUE
AC	290	0	6.0		BLUE
AC	296	0	8.0	A health	RED
AC	305	0	10.0	G poor form	RED
AC	312	0	8.0		BLUE
AC	313	0	8.0		BLUE
AC	316	0	8.0	G poor form	RED
AC	317	0	10.0	E topo	RED
AC	320	0	8.0	G poor form	RED
AC	322	0	8.0	G poor form	RED
AC	323	0	6.0	A health	RED
AC	324	0	6.0	G poor form	RED
AC	325	0	10.0	E topo	RED
AC	326	0	10.0	E topo	RED
AC	327	0	10.0		BLUE
AC	328	0	8.0	G poor form	RED
AC	329	0	8.0		BLUE
AC	331	0	10.0	A health	RED
AC	333	0	8.0	A health	RED
AC	335	0	6.0		BLUE
AC	336	0	6.0		BLUE
AC	337	0	8.0		BLUE
AC	339	0	6.0	A health	RED
AC	340	0	6.0		BLUE
AC	341	0	6.0	A health	RED
AC	342	0	6.0	A health	RED
AC	343	0	6.0		BLUE
AC	346	0	6.0	G poor form	RED
AC	348	0	6.0		BLUE
AC	349	0	8.0		BLUE
AC	350	0	6.0		BLUE
AC	352	0	6.0	G poor form	RED
AC	353	0	8.0	A health	RED
AC	355	0	8.0	G poor form	RED

AC	356	0	8.0		BLUE
AC	357	0	8.0	G poor form	RED
AC	358	0	8.0		BLUE
AC	359	0	6.0		BLUE
AC	360	0	8.0	G poor form	RED
AC	361	0	6.0		BLUE
AC	362	0	8.0		BLUE
AC	363	0	6.0	G poor form	RED
AC	365	0	8.0	G poor form	RED
AC	366	0	8.0	F adjacent plant	RED
AC	371	0	8.0	A health	RED
AC	388	0	10.0	G poor form	RED
AC	393	0	6.0	F adjacent plant	RED
AC	399	0	4.0	E topo	RED
AC	400	0	4.0		BLUE
AC	406	0	4.0	E topo	RED
AC	412	0	6.0	A health	BLUE

ACACIA GREGGI
CAT CLAW ACACIA (AG)

TYPE	TAG NUMBER	CALIPER (IN.)	HEIGHT (FT.)	CRITERIA FOR REMOVAL	RIBBON COLOR
AG	38	0	10.0	G poor form	RED
AG	140	0	6.0	G poor form	RED
AG	237	0	10.0	G poor form	RED
AG	295	0	6.0		BLUE
AG	298	0	8.0	G poor form	RED
AG	306	0	6.0		BLUE
AG	373	0	8.0		BLUE
AG	377	0	6.0		BLUE

CARNEGIEA GIGANTEA
SAGUARO (CG)

TYPE	TAG NUMBER	CALIPER (IN.)	HEIGHT (FT.)	CRITERIA FOR REMOVAL	RIBBON COLOR
CG	397	0	4.0	0.0	BLUE
CG	398	0	4.0	0.0	BLUE

CELTIS PALLIDA
DESERT HACKBERRY (CP)

TYPE	TAG NUMBER	CALIPER (IN.)	HEIGHT (FT.)	CRITERIA FOR REMOVAL	RIBBON COLOR
CP	33	0	8.0		BLUE
CP	35	0	6.0		BLUE
CP	36	0	6.0		BLUE
CP	53	0	10.0	A health	RED
CP	57	0	10.0		BLUE
CP	150	0	8.0	G poor form	RED
CP	195	0	6.0	G poor form	RED
CP	200	0	6.0		BLUE
CP	212	0	10.0	C not boxable	RED
CP	223	0	6.0		BLUE
CP	230	0	8.0	A health	RED
CP	267	0	6.0		BLUE
CP	268	0	6.0	G poor form	RED
CP	303	0	10.0	G poor form	RED
CP	319	0	8.0	G poor form	RED
CP	370	0	6.0		BLUE
CP	374	0	10.0	G poor form	RED
CP	375	0	8.0	A health	RED
CP	378	0	8.0		BLUE
CP	379	0	8.0		BLUE
CP	389	0	8.0		BLUE
CP	391	0	6.0		BLUE
CP	411	0	6.0		BLUE

CERCIDIUM FLORIDUM
BLUE PALO VERDE (CF)

TYPE	TAG NUMBER	CALIPER (IN.)	HEIGHT (FT.)	CRITERIA FOR REMOVAL	RIBBON COLOR
CF	9	4	8.0		BLUE
CF	19	4	8.0		BLUE
CF	20	8	14.0	A health	RED
CF	23	6	10.0	G poor form	RED
CF	24	6	10.0	E topo	RED
CF	32	4	10.0		BLUE
CF	48	6	10.0	A health	RED
CF	64	12	14.0	G poor form	RED
CF	66	6	12.0		BLUE
CF	85	8	12.0	A health	RED
CF	123	10	12.0	A health	RED
CF	155	6	10.0	G poor form	RED
CF	205	8	10.0	A health	RED
CF	226	4	8.0		BLUE
CF	232	4	8.0	A health	RED
CF	233	6	10.0	A health	RED
CF	242	6	12.0		BLUE
CF	308	4	10.0	A health	RED
CF	315	8	14.0		RED
CF	330	4	8.0	G poor form	RED
CF	347	6	10.0	A health	RED
CF	365	14	12.0	A health	RED
CF	402	6	8.0	A health	RED
CF	410	4	8.0	F adjacent plant	RED