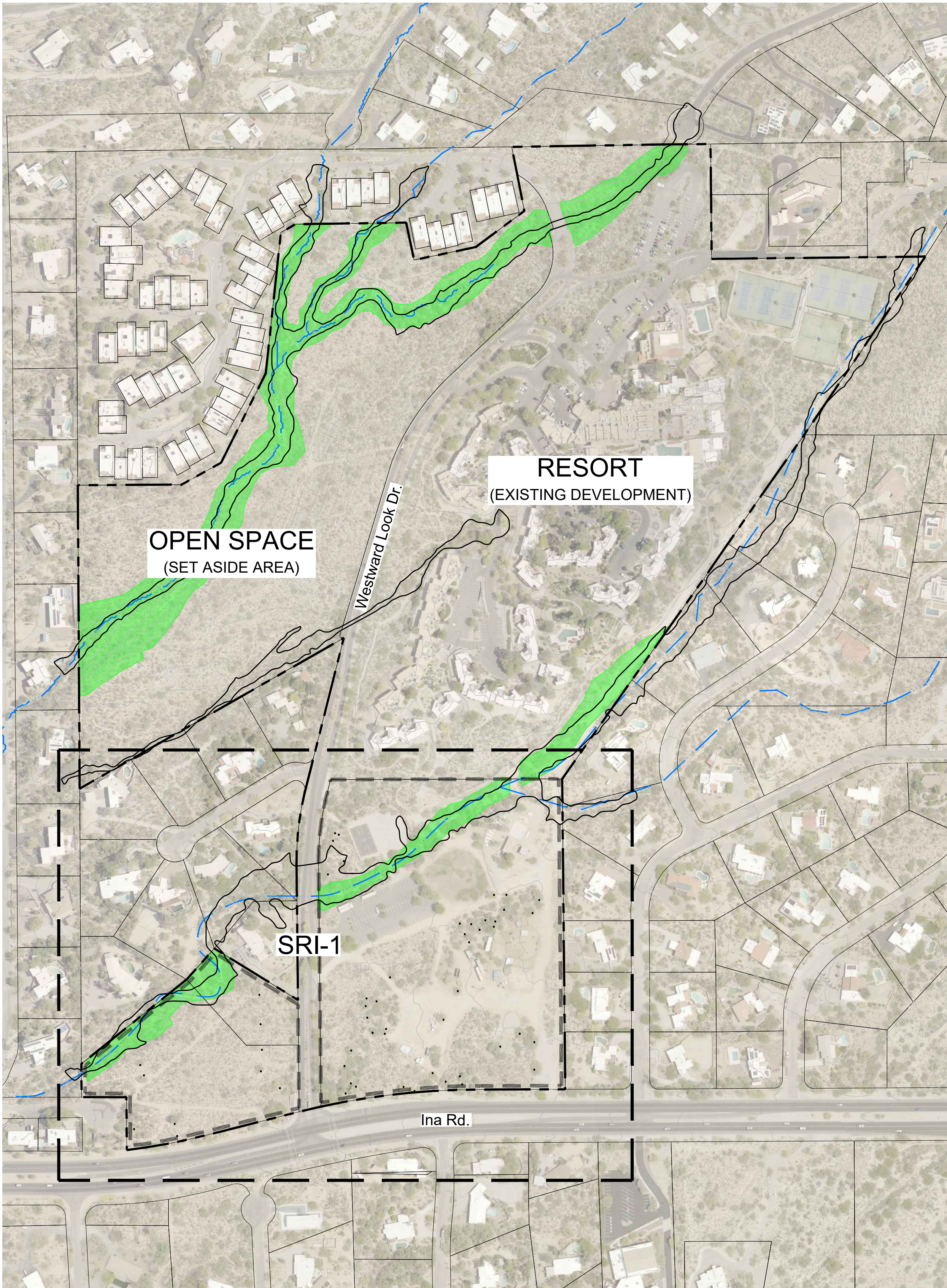


SIGNIFICANT RESOURCE INVENTORY
WESTWARD LOOK RESORT



GENERAL NOTES

1. Zoning: The existing zoning is Pima County CR-1 Single Residence Zone. The proposed zoning is PAD - Westward Look.
2. Assessor's Parcel Numbers (APN): 225-50-0120, 225-50-0130, 225-50-0200, 225-50-0180 & 225-50-021A.
3. Area: The project area is approximately 75.52 acres.
4. Land Use: Existing resort and vacant land

SRI Notes

1. The site consists of the entire Westward Look Resort property. The scope of this inventory is isolated to the portions of the property identified as Development Areas as shown on herein.
2. The site is located within a Developed Area (Non-Wildlife Permeable)
 - 2.1. The site contains 7.73 acres of Critical Resource Area
3. There are no Distinct Native Plant Stands on-site.
4. This property is not subject to Environmentally Sensitive Lands (ESL) regulations.
5. This aerial photo is less than two years old.
6. This site contains no rock outcroppings.
7. The site has slopes greater than 15%. No slopes greater than 15% are present in the Development Area.
8. The site features a combination of constructed and native landscape. Areas of constructed landscape have been excluded from this inventory. The northwest portion of the property has been set aside as open space and has also been excluded from this inventory. Native plant species present include: saguaros (*Carnegiea gigantea*), mesquite trees (*Prosopis velutina*), foothills palo verde trees (*Parkinsonia microphylla*), catclaw acacia (*Acacia greggii*), creosote (*Larrea tridentata*), barrel cactus (*Ferocactus wislizeni*), and various cholla species (*Cylindropuntia*). Significant species are identified on the map.
9. Disposition of vegetation is subject to change based on final improvement plans and engineering.
10. All site plans submitted with the PAD are conceptual. Disposition and mitigation calculations for SRI will be determined at the submittal of development plans and will be referenced on the NPPP.

INVENTORY TABLE

| NUMBER | SPECIES | HEIGHT | CALIPER | TRUNK | VIABILITY | TRANSPLANT | DISPOSITI | ARMS | NOTE1 | NOTE2 | NOTE3 |
|--------|------------------------|--------|---------|--------|-----------|------------|-----------|------|--------------|---------------|--|
| 101 | CERCIDIUM MICROPHYLLUM | 12 | 12 | MULTI | MEDIUM | LOW | NV | 0 | MISTLETOE | DEAD LIMB | |
| 102 | CERCIDIUM MICROPHYLLUM | 16 | 21 | MULTI | HIGH | LOW | NV | 0 | POOR FORM | LOW BRANCHING | |
| 103 | CERCIDIUM MICROPHYLLUM | 19 | 24 | MULTI | HIGH | MEDIUM | TOS | 0 | LARGE SIZE | | |
| 104 | CARNEGIEA GIGANTEA | 16 | 0 | SINGLE | HIGH | HIGH | TOS | 4 | | | |
| 105 | CERCIDIUM MICROPHYLLUM | 16 | 35 | SINGLE | LOW | LOW | TOS | 0 | MISTLETOE | MISTLETOE | |
| 106 | CERCIDIUM MICROPHYLLUM | 17 | 25 | SINGLE | LOW | LOW | TOS | 0 | MISTLETOE | DIEBACK | |
| 107 | CERCIDIUM MICROPHYLLUM | 14 | 19 | SINGLE | MEDIUM | MEDIUM | TOS | 0 | MISTLETOE | | |
| 108 | CERCIDIUM MICROPHYLLUM | 12 | 15 | MULTI | LOW | LOW | NV | 0 | MISTLETOE | DIEBACK | |
| 109 | PROSOPIS VELUTINA | 15 | 15 | MULTI | LOW | LOW | NV | 0 | DEAD TRUNK | DIEBACK | |
| 110 | CERCIDIUM FLORIDUM | 13 | 18 | MULTI | MEDIUM | MEDIUM | TOS | 0 | DIEBACK | | soil |
| 111 | CERCIDIUM MICROPHYLLUM | 17 | 16 | MULTI | MEDIUM | LOW | NV | 0 | DIEBACK | | soil |
| 112 | CERCIDIUM MICROPHYLLUM | 18 | 12 | MULTI | LOW | LOW | NV | 0 | DIEBACK | DEAD LIMB | soil |
| 113 | CERCIDIUM MICROPHYLLUM | 15 | 16 | MULTI | MEDIUM | LOW | TOS | 0 | INTERFERENCE | POOR FORM | soil |
| 114 | CARNEGIEA GIGANTEA | 19 | 0 | SINGLE | HIGH | MEDIUM | TOS | 2 | | | soil |
| 115 | PROSOPIS VELUTINA | 13 | 16 | SINGLE | MEDIUM | MEDIUM | TOS | 0 | | | soil age |
| 116 | CERCIDIUM MICROPHYLLUM | 15 | 19 | MULTI | MEDIUM | MEDIUM | TOS | 0 | POOR FORM | | soil |
| 117 | PROSOPIS VELUTINA | 15 | 29 | SINGLE | MEDIUM | LOW | NV | 0 | POOR FORM | LARGE SIZE | soil |
| 118 | PROSOPIS VELUTINA | 19 | 15 | MULTI | MEDIUM | LOW | NV | 0 | POOR FORM | LARGE SIZE | age |
| 119 | CERCIDIUM MICROPHYLLUM | 18 | 17 | MULTI | MEDIUM | MEDIUM | TOS | 0 | MISTLETOE | DIEBACK | |
| 120 | CERCIDIUM MICROPHYLLUM | 18 | 15 | SINGLE | LOW | LOW | NV | 0 | DEAD TRUNK | DIEBACK | |
| 121 | CERCIDIUM FLORIDUM | 15 | 14 | SINGLE | LOW | LOW | NV | 0 | DEAD TRUNK | DIEBACK | |
| 122 | CERCIDIUM MICROPHYLLUM | 18 | 15 | MULTI | MEDIUM | LOW | TOS | 0 | MISTLETOE | | |
| 123 | PROSOPIS VELUTINA | 15 | 18 | MULTI | MEDIUM | LOW | TOS | 0 | BARK BEETLE | | soils |
| 124 | CERCIDIUM MICROPHYLLUM | 16 | 25 | MULTI | MEDIUM | LOW | TOS | 0 | DIEBACK | POOR FORM | |
| 125 | CERCIDIUM MICROPHYLLUM | 12 | 13 | MULTI | MEDIUM | LOW | TOS | 0 | DIEBACK | POOR FORM | |
| 126 | PROSOPIS VELUTINA | 15 | 18 | MULTI | MEDIUM | LOW | TOS | 0 | DIEBACK | BARK BEETLE | |
| 127 | CERCIDIUM MICROPHYLLUM | 18 | 18 | MULTI | MEDIUM | LOW | TOS | 0 | DIEBACK | | age |
| 128 | CERCIDIUM FLORIDUM | 19 | 30 | SINGLE | MEDIUM | LOW | TOS | 0 | DIEBACK | | trunk size |
| 129 | CERCIDIUM FLORIDUM | 15 | 13 | SINGLE | MEDIUM | LOW | TOS | 0 | DIEBACK | DAMAGED | trunk size |
| 130 | CERCIDIUM FLORIDUM | 16 | 18 | MULTI | MEDIUM | LOW | TOS | 0 | DIEBACK | DAMAGED | |
| 131 | PROSOPIS VELUTINA | 25 | 50 | MULTI | LOW | LOW | TOS | 0 | DIEBACK | DAMAGED | huge old beast |
| 132 | PROSOPIS VELUTINA | 22 | 30 | SINGLE | LOW | LOW | TOS | 0 | DIEBACK | DAMAGED | huge old beast |
| 133 | PROSOPIS VELUTINA | 25 | 21 | SINGLE | LOW | LOW | TOS | 0 | DIEBACK | DEAD LIMB | huge old beast |
| 134 | PROSOPIS VELUTINA | 18 | 40 | SINGLE | LOW | LOW | TOS | 0 | MISTLETOE | DEAD LIMB | huge old beast |
| 135 | PROSOPIS VELUTINA | 18 | 20 | SINGLE | MEDIUM | LOW | TOS | 0 | | DEAD LIMB | |
| 136 | PROSOPIS VELUTINA | 18 | 20 | SINGLE | MEDIUM | LOW | TOS | 0 | DIEBACK | | |
| 137 | PROSOPIS VELUTINA | 18 | 13 | MULTI | LOW | LOW | NV | 0 | DIEBACK | DEAD TRUNK | |
| 138 | PROSOPIS VELUTINA | 12 | 116 | MULTI | LOW | LOW | NV | 0 | DIEBACK | DEAD TRUNK | |
| 139 | PROSOPIS VELUTINA | 19 | 12 | MULTI | LOW | LOW | NV | 0 | DIEBACK | DEAD TRUNK | |
| 140 | PROSOPIS VELUTINA | 15 | 21 | SINGLE | LOW | LOW | NV | 0 | DIEBACK | DEAD TRUNK | |
| 141 | PROSOPIS VELUTINA | 16 | 19 | MULTI | MEDIUM | LOW | NV | 0 | DIEBACK | | |
| 142 | PROSOPIS VELUTINA | 19 | 15 | MULTI | LOW | LOW | NV | 0 | DIEBACK | MISTLETOE | |
| 143 | PROSOPIS VELUTINA | 15 | 18 | MULTI | MEDIUM | LOW | TOS | 0 | MISTLETOE | | |
| 144 | PROSOPIS VELUTINA | 18 | 15 | MULTI | MEDIUM | LOW | TOS | 0 | MISTLETOE | DIEBACK | |
| 145 | CERCIDIUM MICROPHYLLUM | 19 | 15 | MULTI | MEDIUM | LOW | TOS | 0 | MISTLETOE | DIEBACK | |
| 146 | CERCIDIUM MICROPHYLLUM | 21 | 18 | MULTI | MEDIUM | LOW | TOS | 0 | MISTLETOE | | |
| 147 | PROSOPIS VELUTINA | 24 | 20 | MULTI | LOW | LOW | TOS | 0 | MISTLETOE | DIEBACK | |
| 148 | CERCIDIUM MICROPHYLLUM | 8 | 22 | MULTI | MEDIUM | LOW | TOS | 0 | MISTLETOE | DIEBACK | soils |
| 149 | CERCIDIUM MICROPHYLLUM | 14 | 18 | MULTI | MEDIUM | LOW | TOS | 0 | MISTLETOE | INTERFERENCE | soils |
| 150 | CERCIDIUM MICROPHYLLUM | 16 | 18 | MULTI | MEDIUM | LOW | TOS | 0 | | | soils |
| 151 | CERCIDIUM MICROPHYLLUM | 12 | 12 | MULTI | MEDIUM | MEDIUM | TOS | 0 | POOR FORM | | soils |
| 152 | CERCIDIUM MICROPHYLLUM | 18 | 16 | MULTI | MEDIUM | LOW | TOS | 0 | POOR FORM | LOW BRANCHING | soils |
| 153 | PROSOPIS VELUTINA | 19 | 16 | MULTI | LOW | LOW | NV | 0 | DIEBACK | MISTLETOE | |
| 154 | PROSOPIS VELUTINA | 19 | 50 | MULTI | LOW | LOW | NV | 0 | DIEBACK | MISTLETOE | hot mess branches on ground not transplantable |



SECTION 36, TOWNSHIP 12 SOUTH RANGE 13 EAST,
G&SRB&M PIMA COUNTY, ARIZONA

LOCATION MAP

SCALE: 3" = 1 MILE

SHEET INDEX:

| SHEET TITLE | SHEET # | PAGE # |
|-------------|------------|--------|
| COVER | THIS SHEET | 1 |
| PLAN SHEET | SRI-1 | 2 |

SUBMITTAL HISTORY:

1st 10/15/20 Town of Oro Valley

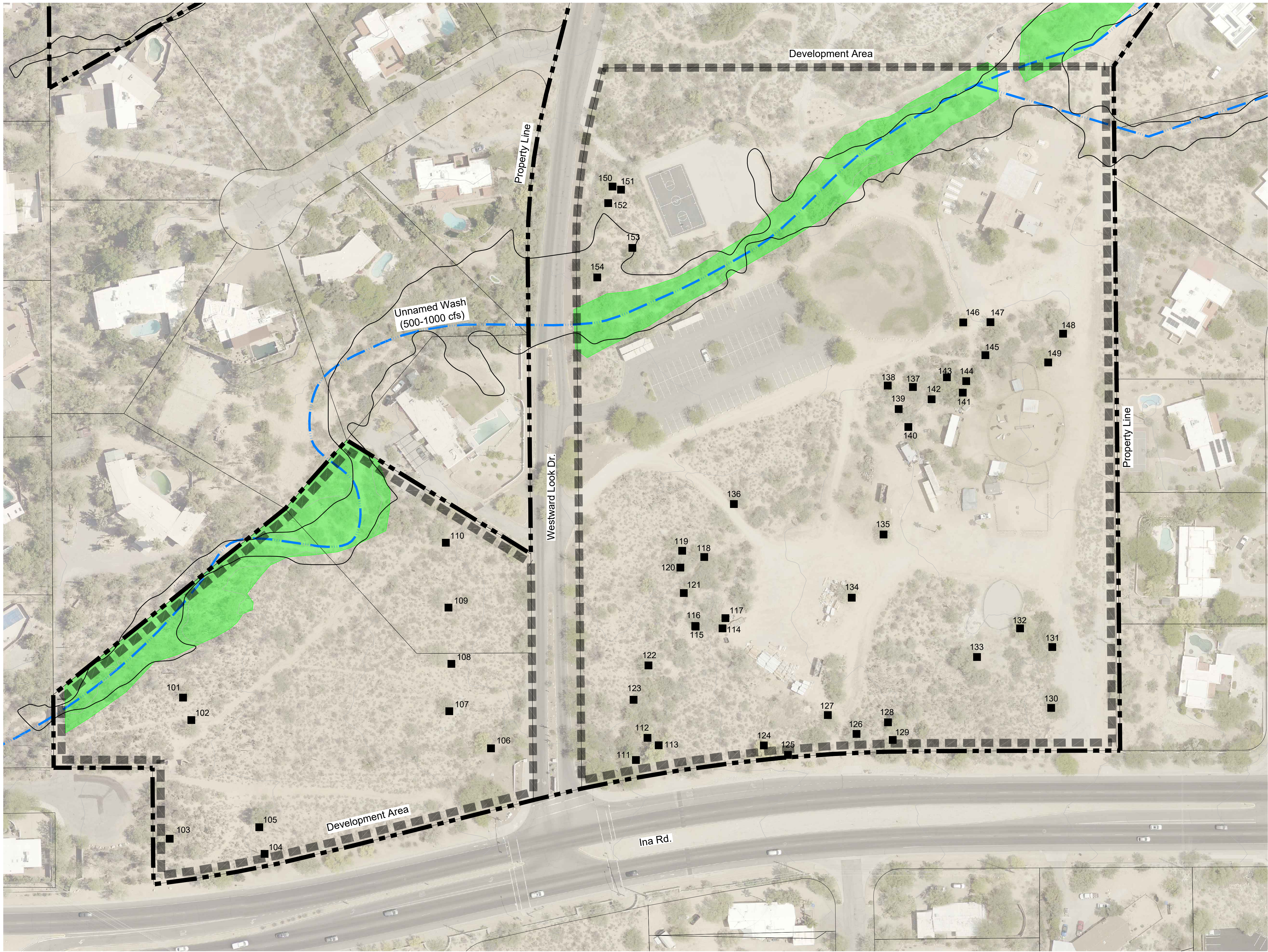
LEGEND

| | |
|--|------------------------------------|
| | Property Line |
| | Development Area |
| | Parcel |
| | Wash |
| | 100-year Flood Limit |
| | 2-foot Contour |
| | Matchline |
| | Inventoried Significant Vegetation |
| | Critical Resource Area |

APPROVAL SIGNATURES: DATE

| # | REVISIONS/SUBMITTALS | DATE |
|---|----------------------|------|
| | | |
| | | |
| | | |
| | | |
| | | |





LEGEND

- Property Line
- Development Area
- Parcel
- Wash
- 100-year Flood Limit
- 2-foot Contour
- Matchline
- Inventoried Significant Vegetation
- Critical Resource Area

Note: Development Area line shown offset for graphic clarity purposes. Development Area boundary extends to the property boundary/parcel line.



PROJECT: WWL-01
DATE: 10.13.2020
DRAWN BY: AC
CHECKED BY: CL

CALL TWO WORKING DAYS BEFORE YOU DIG
602-263-1100
1-800-STAKE-IT
(OUTSIDE MARICOPA COUNTY)

| # | REVISIONS/SUBMITTALS | DATE |
|---|----------------------|------|
| | | |
| | | |
| | | |
| | | |
| | | |

ENGINEER:
Kimley-Horn & Associates
Heather Roberts
333 E. Wetmore Rd. Ste 280
Tucson, AZ 85705
520-615-9191
HeatherD.Roberts@kimley-horn.com

LANDSCAPE ARCHITECT:
The Planning Center
Daniel Bradshaw
2 E Congress #600
Tucson, AZ 85701
520-623-6146
dbradshaw@azplanningcenter.com

OWNER/DEVELOPER:
Wyndham Westward Look
Grand Resort
Andrew Stegen
245 E. Ina Rd.
Tucson, AZ 85704
520-917-2460
AStegen@wyndham.com

FOR AGENCY REVIEW AND APPROVAL ONLY. NOT FOR CONSTRUCTION. NOT FOR BIDDING



SIGNIFICANT RESOURCE INVENTORY
WESTWARD LOOK RESORT

CASE NO:
REFERENCE:
SRI-1
2 OF 2

\\PROJECTS\WWL-01\AUTOCAD\WORKING DRAWINGS\WWL-01_S&D.DWG, 10/14/2020, 9:47 AM, ADAM CAIL
THE USE OF PLANS PREPARED BY THE PLANNING CENTER SHALL BE RESTRICTED TO THE ORIGINAL SITE FOR WHICH THEY WERE PREPARED AND PUBLICATION THEREOF IS LIMITED TO SUCH USE. REPRODUCTION, PUBLICATION OR REUSE BY ANY METHOD, IN WHOLE OR IN PART, WITHOUT THE EXPRESSED WRITTEN CONSENT FROM THE LANDSCAPE ARCHITECT IS PROHIBITED. TITLE TO THESE CONCEPTS AND PLANS SHALL REMAIN WITH THE LANDSCAPE ARCHITECT WITHOUT PREJUDICE. VISUAL CONTACT WITH THE PLANS SHALL CONSTITUTE PRIMA FACIE EVIDENCE OF THE ACCEPTANCE OF THESE RESTRICTIONS. THE DRAWINGS OR CONCEPTS SHALL NOT BE USED IN PART OR IN WHOLE FOR CONSTRUCTION WITHOUT PERMISSION FROM THE PLANNING CENTER.