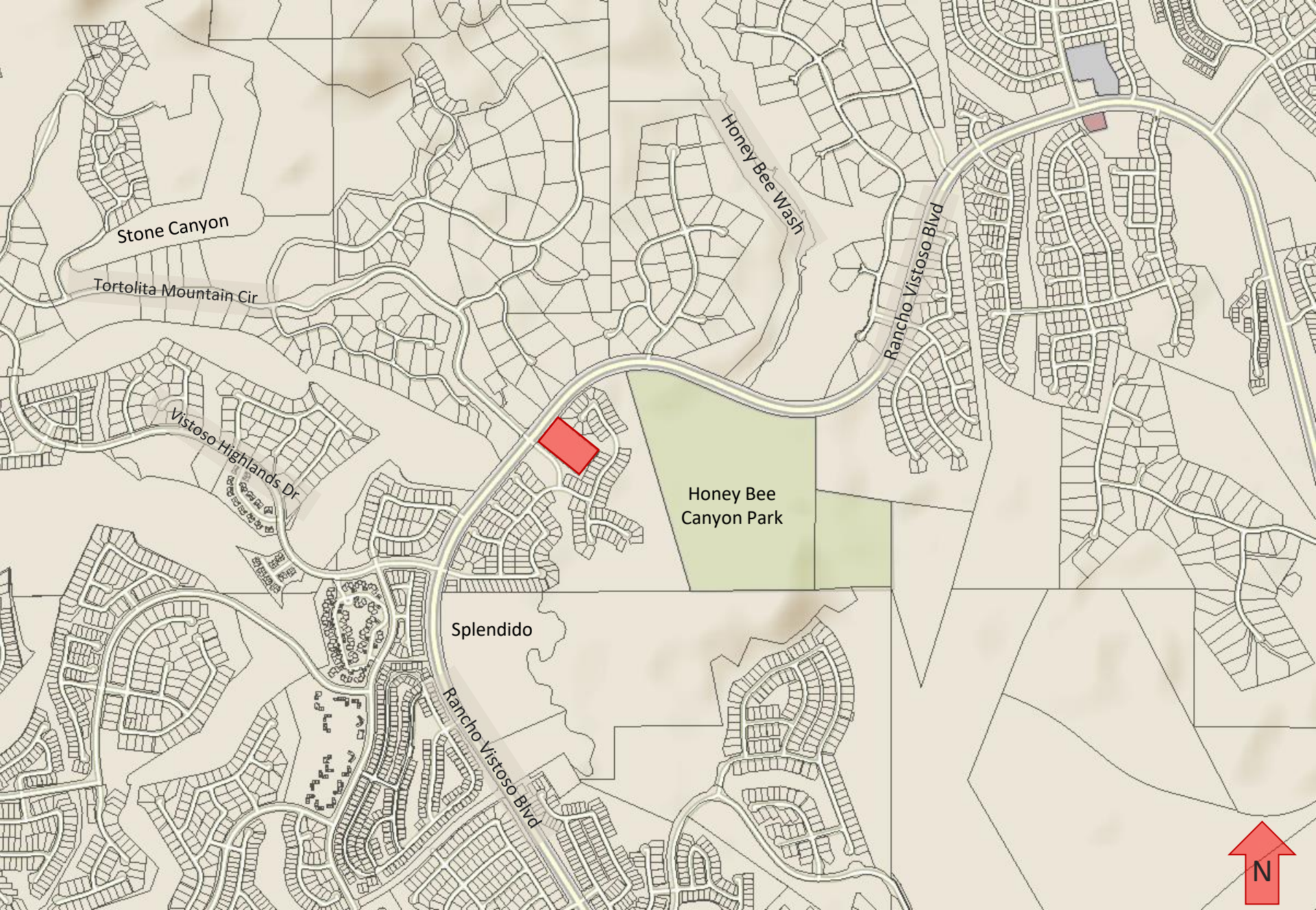


Residences at Morning Vista

CONCEPTUAL DESIGN REVIEW

Conceptual Review

- Site Plan
- Landscape Plan
- Architectural Plans

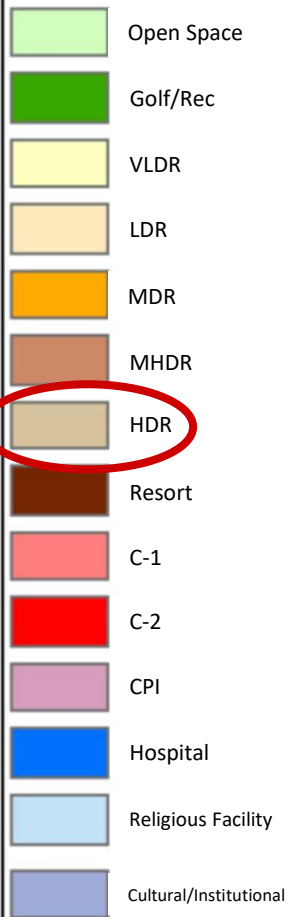


Location Map



Context Map

(5) Rancho Vistoso



Rancho Vistoso Land Use Map



- Project Area: 3.5 acres
- Number of Townhomes: 18
- Project Density: 5.14 RAC
- Permitted Density (HDR): 8-17 RAC
- Proposed Building Height: 16 feet/1 story
- Permitted Building Height: 34 feet/3 stories

Conceptual Site/Landscape Plan



Conceptual Architectural Design

FRONT ELEVATION



Conceptual Architectural Design

SIDE ELEVATION



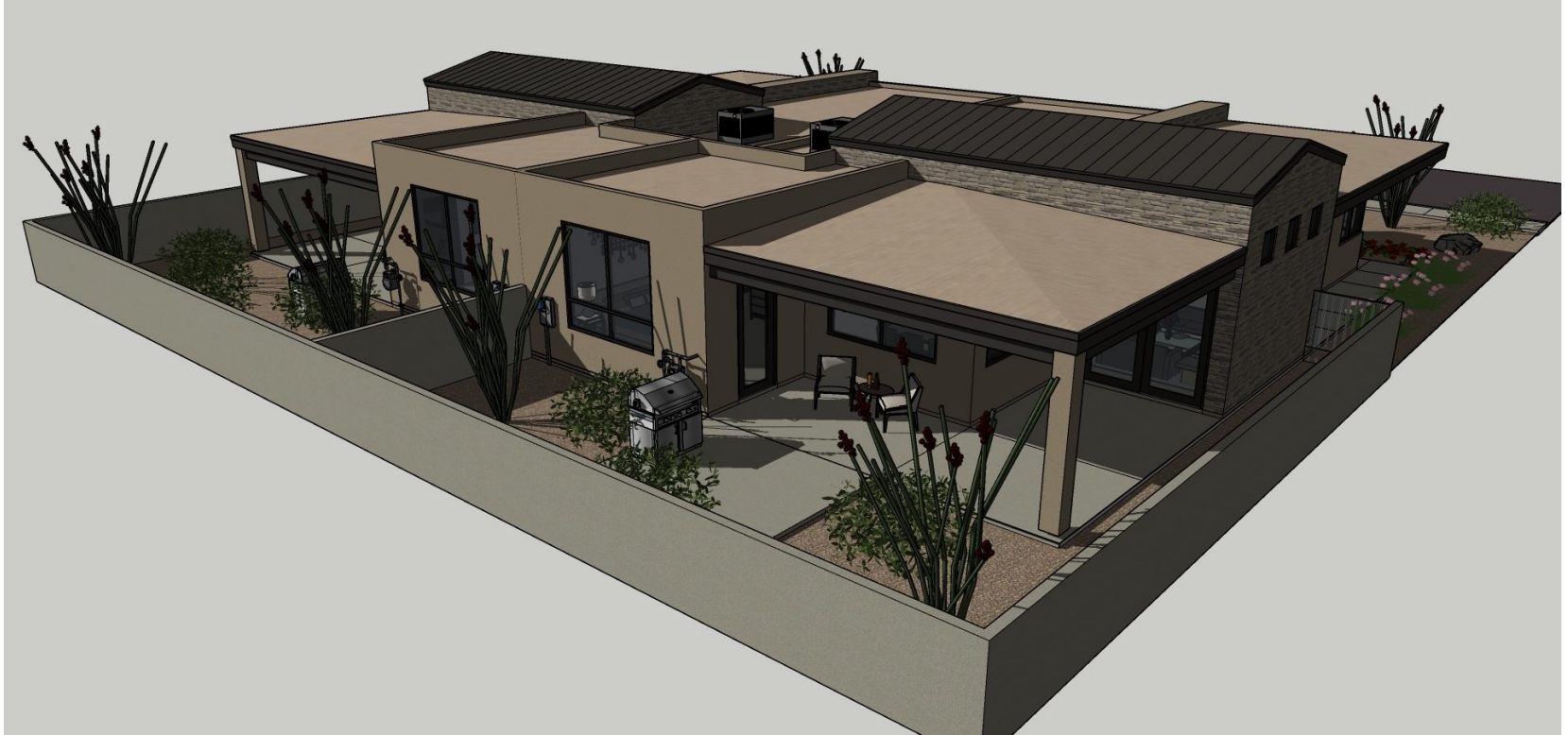
Conceptual Architectural Design

REAR ELEVATION



Conceptual Architectural Design

VIEW FROM NORTHEAST



Conceptual Architectural Design

VIEW FROM NORTHWEST



Conceptual Architectural Design

VIEW FROM SOUTHEAST



Conceptual Architectural Design

VIEW FROM SOUTHWEST

Contact Information

Keri Silvyn | Lazarus & Silvyn, P. C.

KSilvyn@LSLawAZ.com | 520.207.4464

Robin Large | Lazarus & Silvyn, P. C.

RLarge@LSLawAZ.com | 520.207.4464

Conceptual Design Review Process

Neighborhood Meeting

- May 20, 2021

Application Submittal & Staff Review

- Late May 2021

Planning & Zoning Commission

Mayor & Council

Begin Final Design Review Process