

North

SCALE: 1"=150'
C.I. = 1.0'

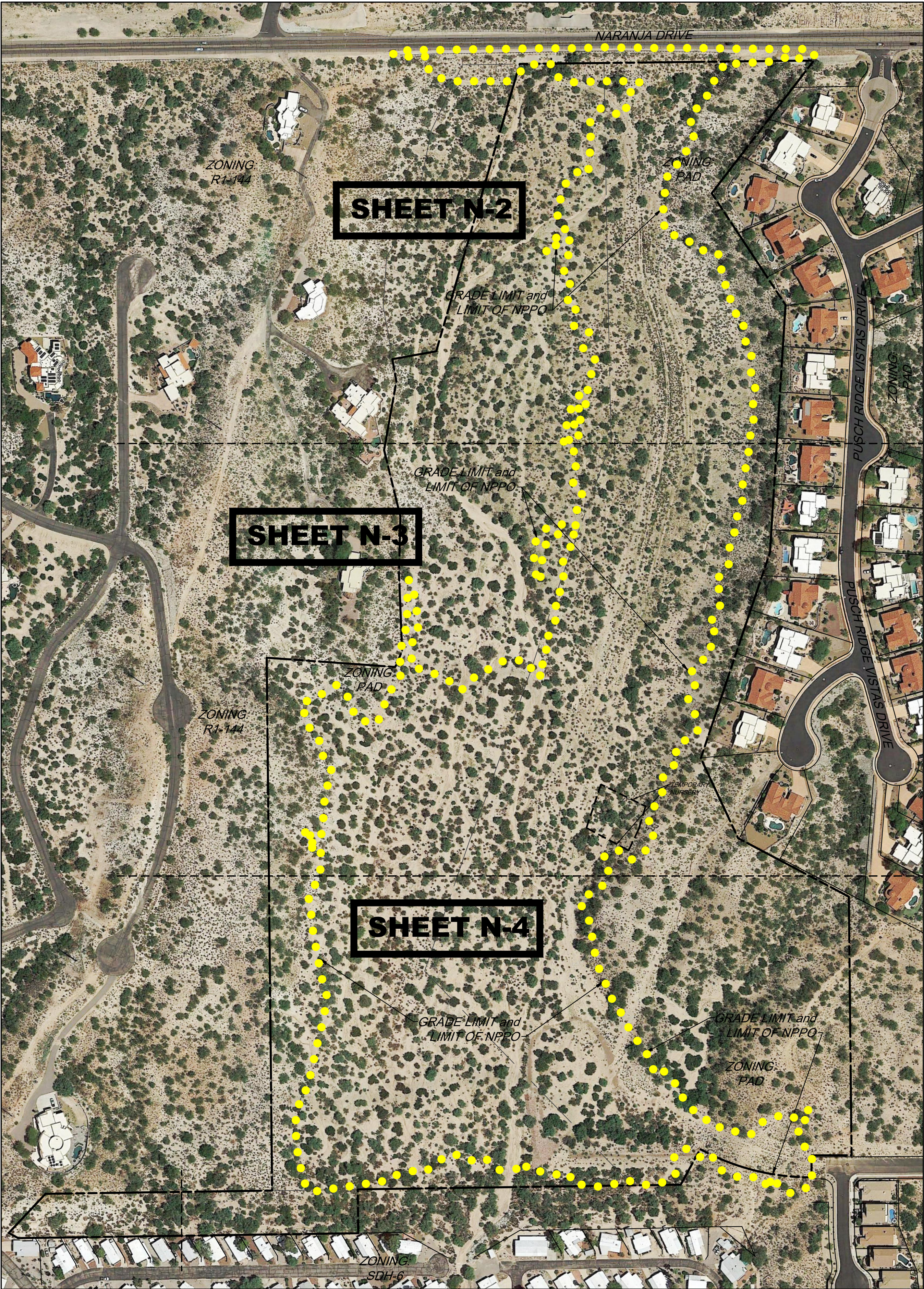
NATIVE PLANT PRESERVATION PLAN

FOR

NARANJA TRAILS

OV2202968

TOWN OF ORO VALLEY, PIMA COUNTY, ARIZONA
SUBJECT TO RIVERS EDGE PAD CR-2 ZONING,
PIMA COUNTY HILLSIDE DEVELOPMENT OVERLAY
ZONE, AND PIMA COUNTY GRADING REQUIREMENTS.



NATIVE PLANT PRESERVATION NOTES

Required per Oro Valley

- Gross area of development: 58.02 acres
- Total acres of graded area: 31.80 acres
- Total acres of undisturbed area: 26.22 acres
- The governing document plan is the River's Edge P.A.D., as approved by Pima County and formatted per Oro Valley P.A.D. regulations. Applicable Pima County Case Number is C09-85-72. There are no zoning variances at this point.
- Tag colors have been amended per the requirements of the PAD and interpretations with Michael Spaeth. Per this interpretation, Transplanted on-site will be retagged in blue; all others will be in red or pink.
- Any spaded or boxed tree transplanted on site that dies due to neglect or lack of maintenance shall be replaced with the same size and species of the original salvaged tree, as required by the salvage plan.
- No salvage of plants regulated by the Endangered Species Act and/or the Arizona Native Plant Law may occur without the issuance of the appropriate permit by the State Department of Agriculture.
- Salvage of operations shall not commence until the Zoning inspector has performed an inspection and given approval to be salvaged.
- Temporary nursery shall be in conformance with Section 27.6.B.4.j.
- No identification of Significant Vegetation is required per the River's Edge P.A.D. and interpretation with Michael Spaeth.
- Any plants that are identified for salvage that are destroyed shall be replaced on one-to-one ration with the same species and size as that destroyed.
- The limits of grading shall be staked in the field, in accordance with Section 27.6.B.7.c.ii. Disturbance outside the approved grading limits shall not be permitted.
- Any additional barrel cactus encountered within the limits of construction shall be transplanted within the property. Notify the project monitor of any other additional protected plants encountered during construction.

ABBREVIATIONS

The following abbreviations were used in the plant tables:

- BL - Broken Limbs; Tree has significant broken branches.
BT - Broken Top, generally used in description of cactus.
DW - Dead Wood; Tree has significant die back or dead/broken limbs.
DY - Dying; Tree is dying.
FD - Frost Damage.
LB - Low Branched; Tree has many low branches that will need to be removed for salvaged and removal will destroy structure of tree.
LE - Leaning; Tree is leaning to the point where salvage will be difficult.
MS - Marginal Salvage; Used during field inventory to identify less desirable salvage candidates to be used if needed to meet % requirements.
MT - Tree has significant mistletoe infestation.
NS - Not Salvageable; These are trees which are not included in the calculations for the site because they are not in salvageable condition, per Section 27.6.4.c.iii of the Oro Valley Code.
NV - Not Viable; These are trees which are not included in the calculations for the site because they are not in viable condition.
OT - Tree has an old trunk indicating dieback at some point in the past.
PD - Pruning Damage.
PIP - Plants to be preserved in place.
PROX - Other vegetation in the vicinity will make salvage difficult.
PS - Possible Salvage; Used in the field to identify best potential salvage candidates.
RD - Rodent Damage; Rodents have excavated at the base of the tree.
RFS - Plants to be removed from site, damaged or destroyed.
RT - Rotted Trunk; Trunk has been broken off or rotted out and has hollow areas, making long term health and viability of the tree questionable.
SAL - Salvage; Used during field inventory to identify trees that should be salvaged regardless of % requirements.
SL - Slope; Tree is on steep slope where salvage will not be possible.
SO - Soils; Soil is rocky or otherwise unsuitable for excavation.
SR - Surface roots are evident, making excavation difficult.
ST - Stunted.
SZ - Size of the tree; either spread, caliper or height is not conducive to salvage.
TD - Trunk Damage.
TM - Too Multi; Tree has multiple trunks coming out of the ground that will make moving the tree difficult without significant damage.
TOS - Plant to be transplanted on site.

GENERAL NOTES

- Zoning = River's Edge / MELCOR PAD: C-2
- Gross Site Area = 2,527,152 sf (58.02 acres)
- Land Use = Residential
- Per River's Edge PAD, as approved by Pima County and formatted per Oro Valley PAD regulations, Section 10-302, parts D and E, which in part states, "In all instances the Pima County development standards in force and effect as of the date of approval of this PAD, which are incorporated herein as Appendix B, shall prevail."
- In accordance with Appendix C-2 of the River's Edge PAD, a 60' wide buffer yard shall be used along the north boundary of the property, and will remain as natural desert subject to minor alteration for drainage, landscaping and irrigation. Additionally, this is also a conservation easement but may be initially altered substantially by the developer and then regraded and relandscaped to enhance buffering and aesthetic appearance. No further grading is permitted in this area.
- The vegetation, salvage and inventory requirements for this PAD are referenced on page 6 of Appendix C-2 of the PAD document. Additionally, salvage recommendations, including planting one salvage tree per lot, are referenced in Appendix C-4 Vegetation Salvage Plan of the PAD document. These standards were adopted in 1994, prior to NPPO standards currently used. Inventory requirements per this PAD are to list each major plant, by species and size, and include whether it is to be salvaged.
- Area Calculations:
 - Gross site area = 2,527,152 sf (58.02 acres)
 - Total area graded = 1,385,105 sf (31.80 acres)
 - Total Natural Open Space (NOS) = 26.22 acres
 - Total Common Area = 572,302.117 sf (13.14 acres)
 - Total Landscaped Open Space = 177,291 sf (4.07 acres)
- Bufferyard elements within sight visibility triangles shall be placed so as not to interfere with a visibility plane described by two horizontal lines located 30 inches and 72 inches above finished grade of the roadway surface.
- One (1) tree transplanted from on site is required on each lot per the PAD requirement (referred to as street tree). Location of the street tree may vary based on driveway location. Each tree will be irrigated from water service at the house.
- Street trees to be planted prior to final issuance of permit.
- All trail easements indicated are for use by the general public as permanent, non-motorized trail easements.
- All public trails and signage must be constructed by the developer to Pima Regional Trail System Master Plan standards in consultation with the Town Parks and Recreation department. The applicable cross-section is included within these plans, shown on Sheet 5, Detail 7.
- Trail location, as indicated on these plans, must be field verified by Town staff prior to construction and are subject to adjustment. Signs shall be located approximately every 100 feet along the trail and shall be per separate permit by Oro Valley. Information on signs shall be as directed per Oro Valley.
- Trails must be positioned in a manner to avoid vegetation and minimize potential for erosion.
- For residential developments, construction of all recreational amenities and public or private trails within the project limits must be completed by the time 35% of building permits are issued per Section 26.5 of the Zoning Code.
- All public trails shall be owned and maintained by Oro Valley.

INDEX OF SHEETS

COVER SHEET 1 OF 7
NPPO AERIALS 2-4 OF 7
INVENTORY LIST 5-7 OF 7

OWNER

DAVIS DEVELOPMENT AND
PROPERTIES, LLC
3191 E. 44th STREET
TUCSON, ARIZONA 85713
CONTACT: ROD DAVIS
PHONE: 520-293-0300

DEVELOPER

MERITAGE HOMES
5326 N. LA CHOLLA BLVD.
TUCSON, ARIZONA 85741
CONTACT: LISA HOSKIN
PHONE: 520-225-6853

CIVIL ENGINEER

ATWELL, LLC
7534 N. LA CHOLLA BLVD.
TUCSON, ARIZONA 85741
PHONE: 520-268-6322
CONTACT: FRANCIS HEMMAH, P.E.
FHEMMAH@ATWELL-GROUP.COM
REGISTRATION #52508

SUMMARY OF PLANT MATERIAL					
Botanical Name	Common Name	Transplant	Remove from Site	Preserve in Place	Total per Plant
Acacia constricta	Whitethorn Acacia	0	72	0	72
Acacia greggii	Catclaw Acacia	0	79	0	79
Cercidium floridum	Blue Palo Verde	72	180	0	252
Cercidium microphyllum	Foothills Palo Verde	0	62	0	62
Condalia globosa	Bitter Condalia	0	2	0	2
Olneya tesota	Desert Ironwood	0	2	0	2
Prosopis velutina	Native Mesquite	0	37	0	37
Zizyphus obtusifolia	Gray Thorn	0	2	0	2
Celtis pallida	Hackberry	2	182	0	184
Carnegiea gigantea	Saguaro	3	0	0	3

Approval:
Town of Oro Valley

Planning & Zoning Administrator

Date

PROJECT NUMBER:
OV2202968

ORO VALLEY CASE No:
2000939, 2002761, 2202968
2202969, 2202970, 2301593

PIMA COUNTY CASE NO.
C09-85-72

NATIVE PLANT PRESERVATION PLAN

NARANJA TRAILS

LOTS 1-64 & COMMON AREAS A THROUGH B,
TOWN OF ORO VALLEY, PIMA COUNTY, ARIZONA
A Portion of the East Half of the Northwest Quarter of Section 12, T-12-S,
R-13-E, G&SRBM, Town of Oro Valley, Pima County, AZ

Date: 5/23/24

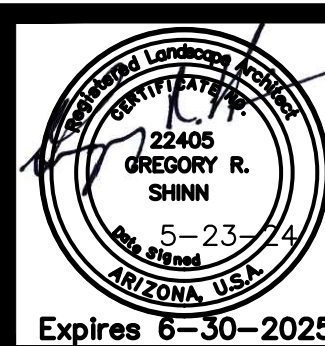
Drawn by: LMW

Checked by: GRS

- ☐ Design Review
☐ Construction Documents
☐ Agency Submittal
☐ Construction Set
☒ Not for Construction

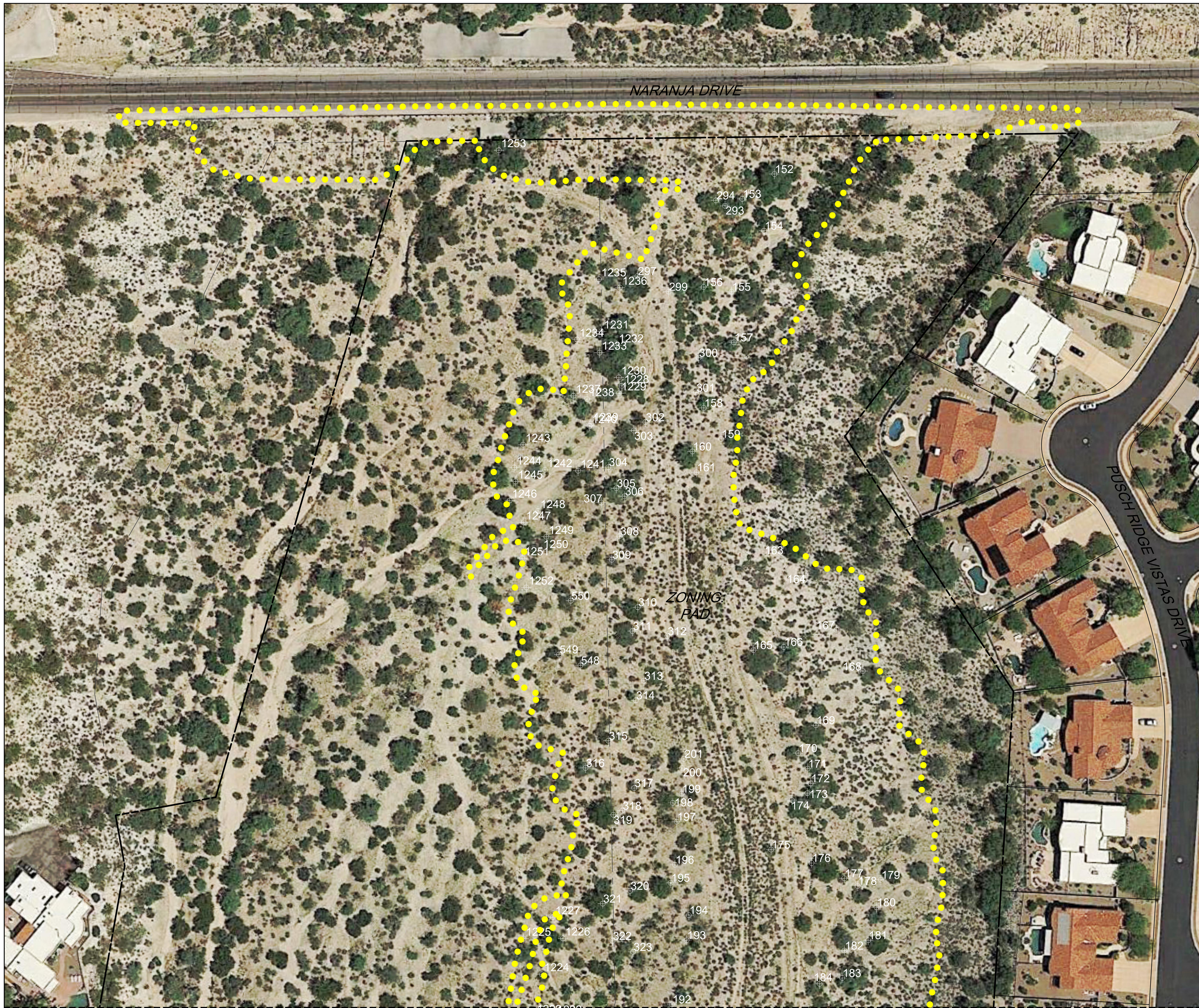
N-1

1 of 7

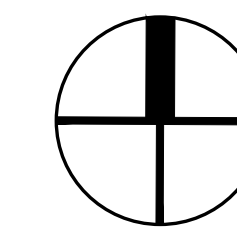


35974 S. Desert Sun Drive
Tucson, AZ 85739
(520) 909-4678
gregs@grslandscapearchitects.com

GRADING PERMIT #2202968



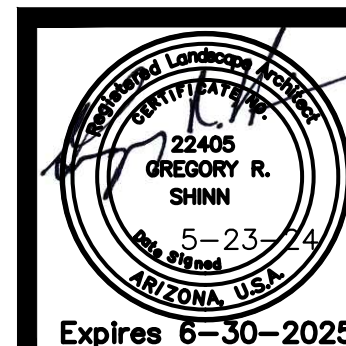
MATCHLINE -- SEE SHEET N-3



North
SCALE: 1"= 50'
C.I. = 1.0'

PROJECT NUMBER:
OV2202968
ORO VALLEY CASE No:
2000939, 2002761, 2202968
2202969, 2202970, 2301593
PIMA COUNTY CASE NO.
C09-85-72

NATIVE PLANT PRESERVATION PLAN
NARANJA TRAILS
LOTS 1-64 & COMMON AREAS A THROUGH B,
TOWN OF ORO VALLEY, PIMA COUNTY, ARIZONA
A Portion of the East Half of the Northwest Quarter of Section 12, T-12-S,
R-13-E, G&SRBM, Town of Oro Valley, Pima County, AZ



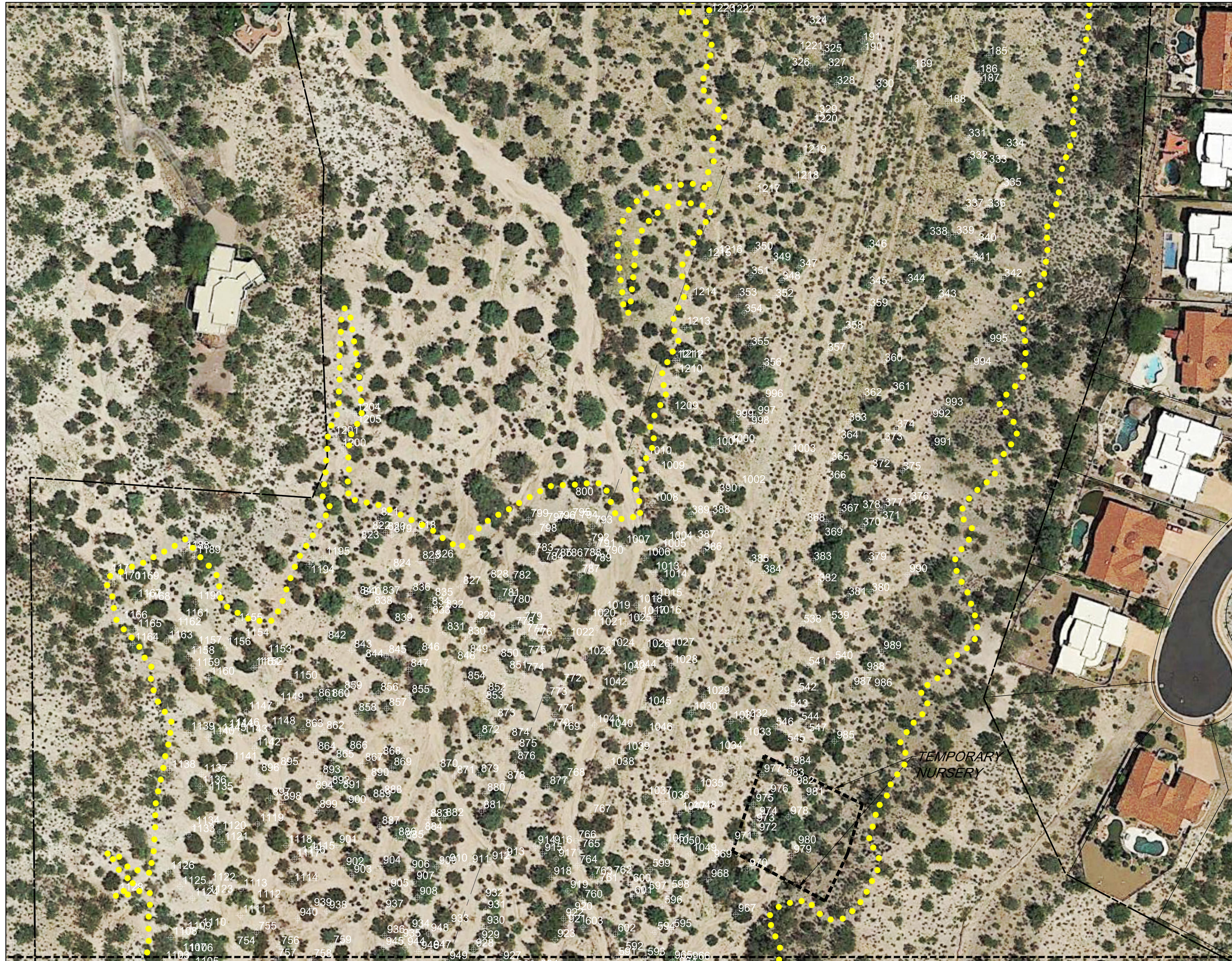
35974 S. Desert Sun Drive
Tucson, AZ 85739
(520) 909-4678
gregs@grslandscapearchitects.com

Date: 5/23/24
Drawn by: LMW
Checked by: GRS
☐ Design Review
☐ Construction Documents
☐ Agency Submittal
☐ Construction Set
☒ Not for Construction

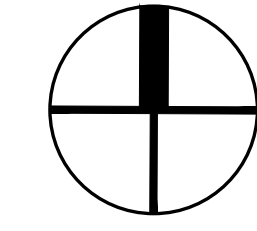
N-2
2 of 7

GRADING PERMIT #2202968

MATCHLINE -- SEE SHEET N-2



MATCHLINE -- SEE SHEET N-4

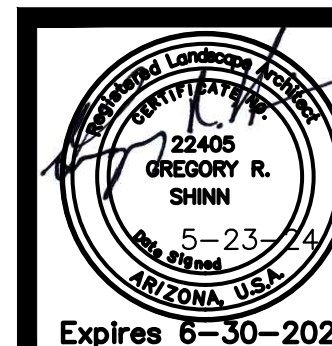


North
SCALE: 1"= 50'
C.I. = 1.0'

PROJECT NUMBER:
OV2202968
ORO VALLEY CASE No:
2000939, 2002761, 2202968
2202969, 2202970, 2301593
PIMA COUNTY CASE NO.
CO9-85-72

NATIVE PLANT PRESERVATION PLAN
NARANJA TRAILS

LOTS 1-64 & COMMON AREAS A THROUGH B,
TOWN OF ORO VALLEY, PIMA COUNTY, ARIZONA
A Portion of the East Half of the Northwest Quarter of Section 12, T-12-S,
R-13-E, G&SRBM, Town of Oro Valley, Pima County, AZ



35974 S. Desert Sun Drive
Tucson, AZ 85739
(520) 909-4678
gregs@grslandscapearchitects.com

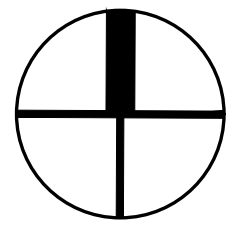
Date: 5/23/24
Drawn by: LMW
Checked by: GRS
☐ Design Review
☐ Construction Documents
☐ Agency Submittal
☐ Construction Set
☒ Not for Construction

N-3

3 of 7

GRADING PERMIT #2202968

MATCHLINE -- SEE SHEET N-3



North
SCALE: 1"= 50'
C.I. = 1.0'



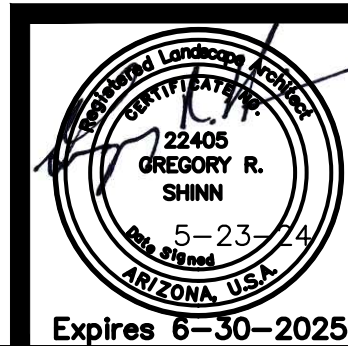
MATCHLINE -- THIS SHEET, BELOW



MATCHLINE -- THIS SHEET, ABOVE

PROJECT NUMBER:
OV2202968
ORO VALLEY CASE No:
2000939, 2002761, 2202968
2202969, 2202970, 2301593
PIMA COUNTY CASE NO.
C09-85-72

NATIVE PLANT PRESERVATION PLAN
NARANJA TRAILS
LOTS 1-64 & COMMON AREAS A THROUGH B,
TOWN OF ORO VALLEY, PIMA COUNTY, ARIZONA
A Portion of the East Half of the Northwest Quarter of Section 12, T-12-S,
R-13-E, G&SRBM, Town of Oro Valley, Pima County, AZ



35974 S. Desert Sun Drive
Tucson, AZ 85739
(520) 909-4678
gregs@grslandscapearchitects.com

Date: 5/23/24
Drawn by: LMW
Checked by: GRS
☐ Design Review
☐ Construction Documents
☐ Agency Submittal
☐ Construction Set
☒ Not for Construction

GRADING PERMIT #2202968

PLANT INVENTORY

ID NO.	DESCRIPTION	VIABILITY		RECOMMEND			
		SIZE	TRANSPLANT		COMMENTS		
121	Acacia constricta - Whitethorn Acacia	12+	L	L	NS	MT	DW
158	Acacia constricta - Whitethorn Acacia	6	M	M	RFS	MS	LB
172	Acacia constricta - Whitethorn Acacia	6	L	L	NS	TM	DW
180	Acacia constricta - Whitethorn Acacia	8	L	L	NS	DW	LB
184	Acacia constricta - Whitethorn Acacia	6	L	L	NS	TM	DW
189	Acacia constricta - Whitethorn Acacia	6	H	H	RFS	PS	
194	Acacia constricta - Whitethorn Acacia	10	L	L	NS	BL	TM
214	Acacia constricta - Whitethorn Acacia	12	L	L	NS	DW	MT
233	Acacia constricta - Whitethorn Acacia	10	M	L	RFS	TM	
238	Acacia constricta - Whitethorn Acacia	8	L	L	NS	DW	LE
239	Acacia constricta - Whitethorn Acacia	10	M	L	RFS	DW	LB
294	Acacia constricta - Whitethorn Acacia	6	M	M	RFS	VMS	LB
300	Acacia constricta - Whitethorn Acacia	4	H	M	RFS	MS	LB
304	Acacia constricta - Whitethorn Acacia	4	H	H	RFS	PS	
308	Acacia constricta - Whitethorn Acacia	8	L	L	NS	DW	LB
322	Acacia constricta - Whitethorn Acacia	6	M	M	RFS	MS	LB
326	Acacia constricta - Whitethorn Acacia	8	L	L	NS	DW	MT
335	Acacia constricta - Whitethorn Acacia	8	L	L	NS	RT	DW
336	Acacia constricta - Whitethorn Acacia	8	L	L	NS	RT	DW
337	Acacia constricta - Whitethorn Acacia	8	L	L	NS	RT	DW
338	Acacia constricta - Whitethorn Acacia	12	L	L	NS	RT	DW
339	Acacia constricta - Whitethorn Acacia	8	L	L	NS	RT	DW
341	Acacia constricta - Whitethorn Acacia	6	L	L	NS	LB	DW
352	Acacia constricta - Whitethorn Acacia	8	L	L	NS	DW	RT
358	Acacia constricta - Whitethorn Acacia	6	H	L	RFS	LB	
366	Acacia constricta - Whitethorn Acacia	6	L	L	NS	LB	DW
370	Acacia constricta - Whitethorn Acacia	6	M	L	RFS	LB	DW
376	Acacia constricta - Whitethorn Acacia	8	L	L	NS	RT	DW
381	Acacia constricta - Whitethorn Acacia	8	L	L	NS	DW	TM
388	Acacia constricta - Whitethorn Acacia	8	L	L	NS	DW	LB
389	Acacia constricta - Whitethorn Acacia	4	H	H	RFS	PS	
390	Acacia constricta - Whitethorn Acacia	10	L	L	NS	DY	
394	Acacia constricta - Whitethorn Acacia	8	L	L	NS	DW	TM
433	Acacia constricta - Whitethorn Acacia	6	M	L	RFS	LB	TM
439	Acacia constricta - Whitethorn Acacia	8	L	L	NS	DW	LB
488	Acacia constricta - Whitethorn Acacia	12	L	L	NS	DY	
500	Acacia constricta - Whitethorn Acacia	10	M	M	RFS	VMS	TM
521	Acacia constricta - Whitethorn Acacia	10	L	L	NS	DW	BL
522	Acacia constricta - Whitethorn Acacia	10	L	L	NS	DY	
539	Acacia constricta - Whitethorn Acacia	4	H	H	RFS	PS	
544	Acacia constricta - Whitethorn Acacia	10	L	L	NS	BL	DW
546	Acacia constricta - Whitethorn Acacia	10	H	L	RFS	TM	SZ
547	Acacia constricta - Whitethorn Acacia	6	L	L	NS	SL	DW
563	Acacia constricta - Whitethorn Acacia	10	L	L	NS	DW	BL
575	Acacia constricta - Whitethorn Acacia	6	M	M	RFS	LB	VMS
580	Acacia constricta - Whitethorn Acacia	8	M	L	RFS	DW	LB
582	Acacia constricta - Whitethorn Acacia	6	L	L	NS	DW	LB
583	Acacia constricta - Whitethorn Acacia	8	M	M	RFS	DW	VMS
609	Acacia constricta - Whitethorn Acacia	8	L	L	NS	SR	SL
610	Acacia constricta - Whitethorn Acacia	4	M	L	RFS		SL
611	Acacia constricta - Whitethorn Acacia	6	L	L	NS		SL
619	Acacia constricta - Whitethorn Acacia	8	L	L	NS	DW	RT
621	Acacia constricta - Whitethorn Acacia	6	L	L	NS	LB	DW
629	Acacia constricta - Whitethorn Acacia	8	L	L	NS	BL	DW
675	Acacia constricta - Whitethorn Acacia	8	M	M	RFS	VMS	DW
712	Acacia constricta - Whitethorn Acacia	6	L	L	NS		DW
713	Acacia constricta - Whitethorn Acacia	10	M	L	RFS	LB	DW
731	Acacia constricta - Whitethorn Acacia	10	M	L	RFS	LB	DW
738	Acacia constricta - Whitethorn Acacia	8	L	L	NS	MT	DW
750	Acacia constricta - Whitethorn Acacia	6	L	L	NS	DW	DW
751	Acacia constricta - Whitethorn Acacia	6	M	M	RFS	MS	SO
753	Acacia constricta - Whitethorn Acacia	8	L	L	NS	IN	
770	Acacia constricta - Whitethorn Acacia	4	H	M	RFS	MS	LB
775	Acacia constricta - Whitethorn Acacia	4	M	M	RFS	MS	LB
777	Acacia constricta - Whitethorn Acacia	6	M	M	RFS	MS	LB
778	Acacia constricta - Whitethorn Acacia	4	M	M	RFS	MS	LB
779	Acacia constricta - Whitethorn Acacia	4	M	M	RFS	MS	LB
828	Acacia constricta - Whitethorn Acacia	4	H	M	RFS	VMS	LB
829	Acacia constricta - Whitethorn Acacia	4	M	M	RFS	SO	LB
830	Acacia constricta - Whitethorn Acacia	4	M	M	RFS	SO	LB
831	Acacia constricta - Whitethorn Acacia	12	M	L	RFS	SO	LB
834	Acacia constricta - Whitethorn Acacia	12+	L	L	NS	DW	SZ
837	Acacia constricta - Whitethorn Acacia	4	M	L	RFS	DW	TM
848	Acacia constricta - Whitethorn Acacia	6	M	M	RFS	MS	LB
849	Acacia constricta - Whitethorn Acacia	6	M	M	RFS	MS	LB
851	Acacia constricta - Whitethorn Acacia	4	M	M	RFS	MS	LB
859	Acacia constricta - Whitethorn Acacia	6	M	L	RFS	LE	DW
861	Acacia constricta - Whitethorn Acacia	8	M	L	RFS	DW	
863	Acacia constricta - Whitethorn Acacia	8	L	L	NS	DW	LB
899	Acacia constricta - Whitethorn Acacia	10	L	L	NS	DW	LB
902	Acacia constricta - Whitethorn Acacia	8	L	L	NS	DW	LB
932	Acacia constricta - Whitethorn Acacia	4	M	L	RFS	LE	DW
933	Acacia constricta - Whitethorn Acacia	12+	L	L	NS	LE	DW
941	Acacia constricta - Whitethorn Acacia	8	L	L	NS	DW	RT
943	Acacia constricta - Whitethorn Acacia	4	M	L	RFS	DW	TM
952	Acacia constricta - Whitethorn Acacia	8	M	L	RFS	DW	LB
955	Acacia constricta - Whitethorn Acacia	8	L	L	NS	DW	RT
973	Acacia constricta - Whitethorn Acacia	4	H	H	RFS	PS	
974	Acacia constricta - Whitethorn Acacia	8	L	L	NS	DW	
980	Acacia constricta - Whitethorn Acacia	4	M	L	RFS	DW	SL
982	Acacia constricta - Whitethorn Acacia	4	H	M	RFS	MS	LB
984	Acacia constricta - Whitethorn Acacia	8	L	L	NS	DY	
987	Acacia constricta - Whitethorn Acacia	6	M	L	RFS	SL	DW
997	Acacia constricta - Whitethorn Acacia	4	L	L	NS	DW	
1000	Acacia constricta - Whitethorn Acacia	10	L	L	NS	DY	
1009	Acacia constricta - Whitethorn Acacia	6	M	L	RFS	SO	TM
1022	Acacia constricta - Whitethorn Acacia	6	H	H	RFS	PS	
1023	Acacia constricta - Whitethorn Acacia	8	L	L	NS	DY	
1024	Acacia constricta - Whitethorn Acacia	4	H	M	RFS	MS	SO
1031	Acacia constricta - Whitethorn Acacia	6	M	M	RFS	LB	VMS
1032	Acacia constricta - Whitethorn Acacia	6	M	L	RFS	TM	
1034	Acacia constricta - Whitethorn Acacia	6	M	L	RFS	LB	TM
1035	Acacia constricta - Whitethorn Acacia	6	M	L	RFS	LB	TM

ID NO.	DESCRIPTION	SIZE	VIA	TRAN	REC	COMMENTS	
1044	Acacia constricta - Whitethorn Acacia	4	M	M	RFS	SO	MS
1086	Acacia constricta - Whitethorn Acacia	6	M	L	RFS	DW	MT
1094	Acacia constricta - Whitethorn Acacia	8	M	L	RFS	TM	
1095	Acacia constricta - Whitethorn Acacia	8	M	L	RFS	TM	
1107	Acacia constricta - Whitethorn Acacia	6	M	M	RFS	VMS	SO
1109	Acacia constricta - Whitethorn Acacia	8	L	L	NS	DW	LB
1110	Acacia constricta - Whitethorn Acacia	12	M	L	RFS	DW	LE
1126	Acacia constricta - Whitethorn Acacia	4	H	M	RFS	MS	LB
1138	Acacia constricta - Whitethorn Acacia	4	M	L	RFS	DW	SL
1143	Acacia constricta - Whitethorn Acacia	8	M	L	RFS	SO	LE
1150	Acacia constricta - Whitethorn Acacia	6	L	L	NS	RT	DW
1163	Acacia constricta - Whitethorn Acacia	4	M	M	RFS	MS	
1166	Acacia constricta - Whitethorn Acacia	6	L	L	NS	DW	SL
1167	Acacia constricta - Whitethorn Acacia	8	L	L	NS	DW	TM
1169	Acacia constricta - Whitethorn Acacia	8	L	L	NS	DW	TM
1170	Acacia constricta - Whitethorn Acacia	4	H	H	RFS	PS	
1171	Acacia constricta - Whitethorn Acacia	8	L	L	NS	BL	IN
1188	Acacia constricta - Whitethorn Acacia	8	L	L	NS	LB	RT
1201	Acacia constricta - Whitethorn Acacia	8	L	L	NS	RT	DW
1213	Acacia constricta - Whitethorn Acacia	4	M	L	RFS	LB	SZ
1220	Acacia constricta - Whitethorn Acacia	6	L	L	NS	DW	LB
1221	Acacia constricta - Whitethorn Acacia	6	M	L	RFS	DW	LB
1234	Acacia constricta - Whitethorn Acacia	6	M	M	RFS	DW	VMS

ID NO.	DESCRIPTION	SIZE	VIA	TRAN	REC	COMMENTS		
156	Acacia greggii - Catclaw Acacia	12+	M	L	RFS	LE	DW	
170	Acacia greggii - Catclaw Acacia	10	M	L	RFS	LB	TM	
171	Acacia greggii - Catclaw Acacia	8	M	M	RFS	MS		
174	Acacia greggii - Catclaw Acacia	12+	L	L	NS	RD	LB	MT
178	Acacia greggii - Catclaw Acacia	8	M	L	RFS	LE	LB	TM
216	Acacia greggii - Catclaw Acacia	10	M	L	RFS	LE	TM	SZ
225	Acacia greggii - Catclaw Acacia	12+	H	L	RFS	LB	SZ	
226	Acacia greggii - Catclaw Acacia	10	L	L	NS	DW	SZ	
247	Acacia greggii - Catclaw Acacia	4	M	M	RFS	LE	MS	
250	Acacia greggii - Catclaw Acacia	12	L	L	NS	LE	DW	
251	Acacia greggii - Catclaw Acacia	12	L	L	NS	LE	DW	
313	Acacia greggii - Catclaw Acacia	6	M	L	RFS	ST	LB	
318	Acacia greggii - Catclaw Acacia	6	M	L	RFS	LB	ST	
323	Acacia greggii - Catclaw Acacia	6	M	L	RFS	TM	LB	ST
329	Acacia greggii - Catclaw Acacia	6	M	L	RFS	ST	LB	
350	Acacia greggii - Catclaw Acacia	8	M	L	RFS	TM	LB	
353	Acacia greggii - Catclaw Acacia	8	M	M	RFS	VMS	TM	
364	Acacia greggii - Catclaw Acacia	6	M	L	RFS	ST	DW	LB
365	Acacia greggii - Catclaw Acacia	6	M	L	RFS	ST	DW	LB
386	Acacia greggii - Catclaw Acacia	8	M	L	RFS	MT	LB	
387	Acacia greggii - Catclaw Acacia	8	M	L	RFS	MT	LB	TM
395	Acacia greggii - Catclaw Acacia	6	M	M	RFS	VMS	LB	
396	Acacia greggii - Catclaw Acacia	6	M	M	RFS	VMS	LB	
402	Acacia greggii - Catclaw Acacia	6	L	L	NS	DW		
403	Acacia greggii - Catclaw Acacia	6	M	M	RFS	VMS	LB	
407	Acacia greggii - Catclaw Acacia	10	M	L	RFS	SR	LB	
413	Acacia greggii - Catclaw Acacia	6	M	M	RFS	VMS	LB	
438	Acacia greggii - Catclaw Acacia	4	M	L	RFS	ST	TM	
445	Acacia greggii - Catclaw Acacia	6	M	L	RFS	ST	LB	
446	Acacia greggii - Catclaw Acacia	6	M	L	RFS	ST	LB	
449	Acacia greggii - Catclaw Acacia	12+	L	L	NS	SR	LB	TM
457	Acacia greggii - Catclaw Acacia	6	M	M	RFS	VMS		
467	Acacia greggii - Catclaw Acacia	6	M	L	RFS	LB	TM	
475	Acacia greggii - Catclaw Acacia	8	L	L	NS	SL		
480	Acacia greggii - Catclaw Acacia	6	M	L	RFS	LB	TM	
493	Acacia greggii - Catclaw Acacia	6	M	L	RFS	LB		
501	Acacia greggii - Catclaw Acacia	6	M	M	RFS	VMS	TM	
511	Acacia greggii - Catclaw Acacia	6	M	L	RFS	LB	TM	
512	Acacia greggii - Catclaw Acacia	6	M	L	RFS	LB	TM	
515	Acacia greggii - Catclaw Acacia	12	L	L	NS	MT	TM	
516	Acacia greggii - Catclaw Acacia	12	L	L	NS	MT	TM	
520	Acacia greggii - Catclaw Acacia	10	M	L	RFS	DW	TM	
528	Acacia greggii - Catclaw Acacia	6	M	L	RFS	LB		
529	Acacia greggii - Catclaw Acacia	8	M	L	RFS	LB	TM	
532	Acacia greggii - Catclaw Acacia	10	M	L	RFS		TM	
533	Acacia greggii - Catclaw Acacia	12	L	L	NS	LB	TM	
535	Acacia greggii - Catclaw Acacia	10	M	L	RFS	TM		
537	Acacia greggii - Catclaw Acacia	18+	L	L	NS	RD		
542	Acacia greggii - Catclaw Acacia	6	M	M	RFS	VMS	LB	
550	Acacia greggii - Catclaw Acacia	6	M	L	RFS	TM	DW	
564	Acacia greggii - Catclaw Acacia	8	L	L	NS	DW	LB	
589	Acacia greggii - Catclaw Acacia	12+	L	L	NS	DW	LB	
608	Acacia greggii - Catclaw Acacia	6	L	L	NS	LB	DW	
615	Acacia greggii - Catclaw Acacia	8	M	L	RFS	LB	DW	
623	Acacia greggii - Catclaw Acacia	8	M	L	RFS	LB	DW	
624	Acacia greggii - Catclaw Acacia	6	L	L	NS		DW	
627	Acacia greggii - Catclaw Acacia	8	M	L	RFS	LB	DW	
641	Acacia greggii - Catclaw Acacia	8	L	L	NS	DY		
648	Acacia greggii - Catclaw Acacia	6	M	L	RFS	LE	DW	
653	Acacia greggii - Catclaw Acacia	6	M	L	RFS	LB	DW	
660	Acacia greggii - Catclaw Acacia	6	L	L	NS	DW	LB	
690	Acacia greggii - Catclaw Acacia	6	L	L	NS	LB	DW	
709	Acacia greggii - Catclaw Acacia	4	L	L	NS	DY		
715	Acacia greggii - Catclaw Acacia	6	L	L	NS	DW	LB	
717	Acacia greggii - Catclaw Acacia	8	L	L	NS	DW	LE	
720	Acacia greggii - Catclaw Acacia	6	M	L	RFS	LE		
722	Acacia greggii - Catclaw Acacia	6	M	L	RFS	LE	DW	
734	Acacia greggii - Catclaw Acacia	6	L	L	NS	DW	LE	
735	Acacia greggii - Catclaw Acacia	6	L	L	NS	DW	LE	
749	Acacia greggii - Catclaw Acacia	6	L	L	NS	DW	SO	
767	Acacia greggii - Catclaw Acacia	12	L	L	NS	DW	LB	MT
769	Acacia greggii - Catclaw Acacia	6	L	L	NS	DW	TM	
771	Acacia greggii - Catclaw Acacia	4	L	L	NS	BL	DW	
773	Acacia greggii - Catclaw Acacia	6	M	L	RFS	LB	DW	
774	Acacia greggii - Catclaw Acacia	6	M	L	RFS	LB	DW	
792	Acacia greggii - Catclaw Acacia	10	L	L	NS	DW	TM	SO
793	Acacia greggii - Catclaw Acacia	10	L	L	NS	DW	TM	SO
799	Acacia greggii - Catclaw Acacia	8	L	L	NS	DW	TM	MT

ID NO.	DESCRIPTION	SIZE	VIA	TRAN	REC	COMMENTS
741	Celtis pallida - Hackberry	10	M	L	RFS	TM DW
755	Celtis pallida - Hackberry	8	M	M	RFS	MS TM
766	Celtis pallida - Hackberry	12	M	L	RFS	SZ TM
772	Celtis pallida - Hackberry	8	L	L	NS	SL RD
780	Celtis pallida - Hackberry	10	M	L	RFS	SZ TM
783	Celtis pallida - Hackberry	6	M	L	RFS	DW SO
784	Celtis pallida - Hackberry	6	M	L	RFS	DW SO
785	Celtis pallida - Hackberry	6	M	L	RFS	DW SO
786	Celtis pallida - Hackberry	6	M	L	RFS	DW SO
788	Celtis pallida - Hackberry	8	M	L	RFS	DW TM SO
789	Celtis pallida - Hackberry	6	M	L	RFS	DW TM SO
790	Celtis pallida - Hackberry	6	M	L	RFS	DW TM SO
791	Celtis pallida - Hackberry	6	M	L	RFS	DW TM SO
794	Celtis pallida - Hackberry	6	M	L	RFS	DW TM SO
795	Celtis pallida - Hackberry	8	M	L	RFS	DW TM SO
796	Celtis pallida - Hackberry	8	M	L	RFS	DW TM SO
797	Celtis pallida - Hackberry	8	M	L	RFS	DW TM SO
798	Celtis pallida - Hackberry	8	M	L	RFS	DW TM SO
800	Celtis pallida - Hackberry	8	H	M	RFS	VMS TM SO
820	Celtis pallida - Hackberry	4	L	L	NS	DY
839	Celtis pallida - Hackberry	10	M	L	RFS	DW TM SO
840	Celtis pallida - Hackberry	8	M	L	RFS	DW TM SO
841	Celtis pallida - Hackberry	8	M	M	RFS	MS TM SO
844	Celtis pallida - Hackberry	8	H	M	RFS	DW MS SO
846	Celtis pallida - Hackberry	10	M	L	RFS	SZ
850	Celtis pallida - Hackberry	10	M	L	RFS	SZ LB TM
852	Celtis pallida - Hackberry	8	M	L	RFS	TM LB
854	Celtis pallida - Hackberry	8	M	L	RFS	TM DW SO
857	Celtis pallida - Hackberry	8	L	L	NS	LB DW TM
864	Celtis pallida - Hackberry	8	M	M	RFS	DW LB MS
866	Celtis pallida - Hackberry	8	M	L	RFS	SZ
868	Celtis pallida - Hackberry	6	M	M	RFS	MS
869	Celtis pallida - Hackberry	6	L	L	NS	DW
873	Celtis pallida - Hackberry	6	M	M	RFS	MS
887	Celtis pallida - Hackberry	10	M	L	RFS	DW
938	Celtis pallida - Hackberry	8	M	L	RFS	LB TM
939	Celtis pallida - Hackberry	6	L	L	NS	DW TM RT
940	Celtis pallida - Hackberry	8	M	L	RFS	DW TM
946	Celtis pallida - Hackberry	10	L	L	NS	DW TM
947	Celtis pallida - Hackberry	10	M	L	RFS	DW TM
948	Celtis pallida - Hackberry	8	M	L	RFS	DW TM
958	Celtis pallida - Hackberry	8	M	M	RFS	MS DW
967	Celtis pallida - Hackberry	8	M	L	RFS	DW SO TM
969	Celtis pallida - Hackberry	8	M	L	RFS	DW TM SO
983	Celtis pallida - Hackberry	10	L	L	NS	DW LB
985	Celtis pallida - Hackberry	8	H	L	RFS	SZ
994	Celtis pallida - Hackberry	4	L	L	NS	SL ST
1003	Celtis pallida - Hackberry	4	M	M	RFS	MS
1015	Celtis pallida - Hackberry	12	L	L	NS	DW SO
1017	Celtis pallida - Hackberry	10	M	L	RFS	DW
1025	Celtis pallida - Hackberry	10	M	M	RFS	MS DW
1026	Celtis pallida - Hackberry	10	M	L	RFS	SZ
1054	Celtis pallida - Hackberry	10	M	M	RFS	MS SO
1056	Celtis pallida - Hackberry	10	M	L	RFS	SZ TM
1087	Celtis pallida - Hackberry	12	M	L	RFS	DW SZ
1092	Celtis pallida - Hackberry	8	M	H	TOS	PS
1102	Celtis pallida - Hackberry	10	H	L	RFS	SZ
1120	Celtis pallida - Hackberry	4	M	M	RFS	MS
1122	Celtis pallida - Hackberry	10	M	M	RFS	VMS
1123	Celtis pallida - Hackberry	8	M	L	RFS	DW
1124	Celtis pallida - Hackberry	6	M	L	RFS	DW
1128	Celtis pallida - Hackberry	8	M	L	RFS	SZ TM
1133	Celtis pallida - Hackberry	12	M	L	RFS	DW SZ TM
1137	Celtis pallida - Hackberry	10	M	L	RFS	DW SZ
1141	Celtis pallida - Hackberry	10	M	L	RFS	SZ TM
1146	Celtis pallida - Hackberry	6	M	M	RFS	MS DW
1147	Celtis pallida - Hackberry	8	M	M	RFS	MS DW
1151	Celtis pallida - Hackberry	6	M	M	RFS	VMS DW
1154	Celtis pallida - Hackberry	8	M	L	RFS	TM SZ
1158	Celtis pallida - Hackberry	8	M	L	RFS	DW TM SO
1159	Celtis pallida - Hackberry	8	M	L	RFS	DW TM SO
1161	Celtis pallida - Hackberry	10	M	L	RFS	DW SZ TM
1162	Celtis pallida - Hackberry	10	M	L	RFS	DW SZ TM
1168	Celtis pallida - Hackberry	8	M	L	RFS	DW TM SZ
1190	Celtis pallida - Hackberry	10	M	L	RFS	LB TM SZ
1204	Celtis pallida - Hackberry	6	M	M	RFS	MS
1211	Celtis pallida - Hackberry	8	H	L	RFS	TM SZ
1214	Celtis pallida - Hackberry	6	M	L	RFS	LB TM
1216	Celtis pallida - Hackberry	6	M	M	RFS	DW VMS
1217	Celtis pallida - Hackberry	6	M	M	RFS	DW VMS
1231	Celtis pallida - Hackberry	10	M	L	RFS	SZ TM DW
1241	Celtis pallida - Hackberry	6	M	L	RFS	SL
1246	Celtis pallida - Hackberry	10	M	L	RFS	SZ TM
1248	Celtis pallida - Hackberry	6	M	M	RFS	MS
1252	Celtis pallida - Hackberry	6	M	L	RFS	TM SZ

ID NO.	DESCRIPTION	SIZE	VIA	TRAN	REC	COMMENTS
119	Cercidium floridum - Blue Palo Verde	4	H	H	TOS	PS SO
120	Cercidium floridum - Blue Palo Verde	12+	H	M	RFS	VMS SZ
157	Cercidium floridum - Blue Palo Verde	8	M	M	TOS	MS
159	Cercidium floridum - Blue Palo Verde	6	M	M	RFS	MS LB
160	Cercidium floridum - Blue Palo Verde	10	M	L	RFS	SR
166	Cercidium floridum - Blue Palo Verde	8	M	M	RFS	VMS DW
169	Cercidium floridum - Blue Palo Verde	12+	L	L	NS	RD
173	Cercidium floridum - Blue Palo Verde	12+	L	L	NS	DY
183	Cercidium floridum - Blue Palo Verde	18+	M	L	RFS	BL SZ
190	Cercidium floridum - Blue Palo Verde	12+	M	L	RFS	SZ
191	Cercidium floridum - Blue Palo Verde	12+	M	L	RFS	SZ
192	Cercidium floridum - Blue Palo Verde	8	M	M	TOS	MS
202	Cercidium floridum - Blue Palo Verde	4	H	H	TOS	LB PS
203	Cercidium floridum - Blue Palo Verde	4	H	H	TOS	LB PS
204	Cercidium floridum - Blue Palo Verde	6	H	H	TOS	LB PS
205	Cercidium floridum - Blue Palo Verde	4	H	H	TOS	LB PS
206	Cercidium floridum - Blue Palo Verde	10	H	L	RFS	LB SZ
207	Cercidium floridum - Blue Palo Verde	4	H	L	RFS	LB SZ
208	Cercidium floridum - Blue Palo Verde	4	H	H	TOS	PS
209	Cercidium floridum - Blue Palo Verde	10	H	L	RFS	TM SZ
210	Cercidium floridum - Blue Palo Verde	4	H	H	TOS	PS
211	Cercidium floridum - Blue Palo Verde	6	H	H	TOS	PS
212	Cercidium floridum - Blue Palo Verde	18+	L	L	NS	DW BL
213	Cercidium floridum - Blue Palo Verde	4	H	H	TOS	PS
217	Cercidium floridum - Blue Palo Verde	4	H	M	TOS	LE MS
219	Cercidium floridum - Blue Palo Verde	4	H	H	TOS	PS
220	Cercidium floridum - Blue Palo Verde	6	H	H	TOS	PS
223	Cercidium floridum - Blue Palo Verde	4	H	H	TOS	PS
224	Cercidium floridum - Blue Palo Verde	8	H	M	RFS	MS SZ
229	Cercidium floridum - Blue Palo Verde	12+	L	L	NS	DY
230	Cercidium floridum - Blue Palo Verde	12+	L	L	NS	DY
237	Cercidium floridum - Blue Palo Verde	18+	L	L	NS	DW SZ RT
240	Cercidium floridum - Blue Palo Verde	12+	M	L	RFS	DW SZ
241	Cercidium floridum - Blue Palo Verde	12+	M	L	RFS	DW SZ
242	Cercidium floridum - Blue Palo Verde	18+	M	L	RFS	DW SZ
243	Cercidium floridum - Blue Palo Verde	12+	M	L	RFS	DW SZ
244	Cercidium floridum - Blue Palo Verde	12	M	M	RFS	VMS SZ
246	Cercidium floridum - Blue Palo Verde	12	M	L	RFS	LB LB
248	Cercidium floridum - Blue Palo Verde	12+	L	L	NS	BL DW
249	Cercidium floridum - Blue Palo Verde	6	M	M	TOS	MS
299	Cercidium floridum - Blue Palo Verde	10	H	H	TOS	PS
305	Cercidium floridum - Blue Palo Verde	10	L	L	NS	BL DW
306	Cercidium floridum - Blue Palo Verde	8	L	L	NS	BL DW
310	Cercidium floridum - Blue Palo Verde	8	H	M	RFS	VMS SZ
312	Cercidium floridum - Blue Palo Verde	6	H	H	TOS	PS
314	Cercidium floridum - Blue Palo Verde	4	H	H	TOS	PS
315	Cercidium floridum - Blue Palo Verde	6	H	H	TOS	PS
316	Cercidium floridum - Blue Palo Verde	10	M	L	RFS	DW
325	Cercidium floridum - Blue Palo Verde	10	L	L	NS	DY
330	Cercidium floridum - Blue Palo Verde	4	H	H	TOS	PS
332	Cercidium floridum - Blue Palo Verde	10	M	L	RFS	DW SZ
345	Cercidium floridum - Blue Palo Verde	6	H	H	TOS	PS
346	Cercidium floridum - Blue Palo Verde	6	H	M	RFS	MS LB
347	Cercidium floridum - Blue Palo Verde	12	L	L	NS	DW
349	Cercidium floridum - Blue Palo Verde	12	L	L	NS	BL MT
351	Cercidium floridum - Blue Palo Verde	8	M	M	RFS	VMS
356	Cercidium floridum - Blue Palo Verde	12+	M	L	RFS	LB SZ
357	Cercidium floridum - Blue Palo Verde	6	H	H	TOS	PS
359	Cercidium floridum - Blue Palo Verde	10	M	M	RFS	VMS SZ
360	Cercidium floridum - Blue Palo Verde	10	L	L	NS	BL DW
361	Cercidium floridum - Blue Palo Verde	8	M	M	RFS	MS LB
362	Cercidium floridum - Blue Palo Verde	12	L	L	NS	DY
363	Cercidium floridum - Blue Palo Verde	4	H	M	TOS	MS SO
367	Cercidium floridum - Blue Palo Verde	18+	M	L	RFS	SZ
369	Cercidium floridum - Blue Palo Verde	6	M	M	TOS	MS
380	Cercidium floridum - Blue Palo Verde	4	M	M	TOS	LB MS
383	Cercidium floridum - Blue Palo Verde	12+	M	L	RFS	SZ
384	Cercidium floridum - Blue Palo Verde	8	M	M	RFS	LB MS
391	Cercidium floridum - Blue Palo Verde	6	M	L	RFS	SL LB
397	Cercidium floridum - Blue Palo Verde	12	L	L	NS	SR DW
398	Cercidium floridum - Blue Palo Verde	12+	L	L	NS	DY
404	Cercidium floridum - Blue Palo Verde	4	M	M	TOS	MS LE
405	Cercidium floridum - Blue Palo Verde	12+	L	L	NS	DY
406	Cercidium floridum - Blue Palo Verde	6	M	M	RFS	MS LB
410	Cercidium floridum - Blue Palo Verde	10	M	L	RFS	SR SZ
411	Cercidium floridum - Blue Palo Verde	12+	L	L	NS	BL SZ
419	Cercidium floridum - Blue Palo Verde	8	M	M	RFS	MS LB
423	Cercidium floridum - Blue Palo Verde	12+	L	L	NS	RT DW
424	Cercidium floridum - Blue Palo Verde	6	M	M	RFS	MS LB
429	Cercidium floridum - Blue Palo Verde	6	H	M	TOS	MS LB
430	Cercidium floridum - Blue Palo Verde	6	H	M	RFS	MS LB
441	Cercidium floridum - Blue Palo Verde	10	M	M	RFS	MS LB
442	Cercidium floridum - Blue Palo Verde	8	M	M	RFS	MS LB
444	Cercidium floridum - Blue Palo Verde	6	M	M	RFS	MS LB
447	Cercidium floridum - Blue Palo Verde	6	M	TOS	RFS	MS DW
448	Cercidium floridum - Blue Palo Verde	12+	L	L	NS	DY
450	Cercidium floridum - Blue Palo Verde	18+	L	L	NS	MT SZ SL
452	Cercidium floridum - Blue Palo Verde	10	M	L	RFS	DY SZ
458	Cercidium floridum - Blue Palo Verde	8	M	M	RFS	VMS DW
459	Cercidium floridum - Blue Palo Verde	8	M	M	RFS	VMS DW
460	Cercidium floridum - Blue Palo Verde	10	M	M	RFS	VMS DW
461	Cercidium floridum - Blue Palo Verde	8	M	M	RFS	VMS DW
462	Cercidium floridum - Blue Palo Verde	12	M	L	RFS	SZ DW
464	Cercidium floridum - Blue Palo Verde	12	M	L	RFS	SZ DW
465	Cercidium floridum - Blue Palo Verde	4	M	M	RFS	VMS SL
466	Cercidium floridum - Blue Palo Verde	12+	M	L	RFS	SZ
468	Cercidium floridum - Blue Palo Verde	6	L	L	NS	SL DW
471	Cercidium floridum - Blue Palo Verde	12+	L	L	NS	DW RD
473	Cercidium floridum - Blue Palo Verde	4	H	H	TOS	PS
474	Cercidium floridum - Blue Palo Verde	12+	L	L	NS	SL
476	Cercidium floridum - Blue Palo Verde	8	L	L	NS	SL
477	Cercidium floridum - Blue Palo Verde	12+	L	L	NS	DY
478	Cercidium floridum - Blue Palo Verde	18+	M	L	RFS	SZ DW
481	Cercidium floridum - Blue Palo Verde	6	M	M	RFS	SO VMS

ID NO.	DESCRIPTION	SIZE	VIA	TRAN	REC	COMMENTS
487	Cercidium floridum - Blue Palo Verde	4	M	M	TOS	MS
489	Cercidium floridum - Blue Palo Verde	12+	L	L	NS	DY
498	Cercidium floridum - Blue Palo Verde	12+	M	L	RFS	SZ LB
499	Cercidium floridum - Blue Palo Verde	12	L	L	NS	DY
503	Cercidium floridum - Blue Palo Verde	10	M	L	RFS	LE
517	Cercidium floridum - Blue Palo Verde	10	M	L	RFS	SZ
524	Cercidium floridum - Blue Palo Verde	4	M	M	RFS	VMS LB
526	Cercidium floridum - Blue Palo Verde	8	M	M	RFS	MS LB
571	Cercidium floridum - Blue Palo Verde	12+	L	L	NS	DW LB IN
584	Cercidium floridum - Blue Palo Verde	12+	L	L	NS	DY
585	Cercidium floridum - Blue Palo Verde	10	M	L	RFS	SL
587	Cercidium floridum - Blue Palo Verde	8	L	L	NS	SL DW
591	Cercidium floridum - Blue Palo Verde	4	M	M	TOS	MS
592	Cercidium floridum - Blue Palo Verde	4	H	H	TOS	PS
593	Cercidium floridum - Blue Palo Verde	8	M	M	TOS	MS
594	Cercidium floridum - Blue Palo Verde	12	M	L	RFS	SZ
596	Cercidium floridum - Blue Palo Verde	6	M	L	RFS	LB
597	Cercidium floridum - Blue Palo Verde	6	M	M	TOS	MS
598	Cercidium floridum - Blue Palo Verde	4	L	L	NS	
600	Cercidium floridum - Blue Palo Verde	6	M	M	TOS	MS
601	Cercidium floridum - Blue Palo Verde	6	M	M	TOS	MS
602	Cercidium floridum - Blue Palo Verde	8	M	M	RFS	VMS
605	Cercidium floridum - Blue Palo Verde	12	L	L	NS	DY
607	Cercidium floridum - Blue Palo Verde	10	M	L	RFS	LB
613	Cercidium floridum - Blue Palo Verde	6	L	L	NS	RT DW
618	Cercidium floridum - Blue Palo Verde	10	L	L	NS	DW RT
620	Cercidium floridum - Blue Palo Verde	10	L	L	NS	DY
625	Cercidium floridum - Blue Palo Verde	4	M	M	RFS	VMS
626	Cercidium floridum - Blue Palo Verde	6	L	L	NS	DW
628	Cercidium floridum - Blue Palo Verde	12	L	L	NS	DY
630	Cercidium floridum - Blue Palo Verde	10	M	L	RFS	BL DW
631	Cercidium floridum - Blue Palo Verde	6	M	L	RFS	DW
632	Cercidium floridum - Blue Palo Verde	6	L	L	NS	RT DW
633	Cercidium floridum - Blue Palo Verde	10	M	L	RFS	LB DW
634	Cercidium floridum - Blue Palo Verde	12+	M	L	RFS	LB SZ
635	Cercidium floridum - Blue Palo Verde	8	L	L	NS	LE DW
637	Cercidium floridum - Blue Palo Verde	12	L	L	NS	RD DW
638	Cercidium floridum - Blue Palo Verde	8	M	L	RFS	LB DW
639	Cercidium floridum - Blue Palo Verde	10	M	L	RFS	LB DW
640	Cercidium floridum - Blue Palo Verde	12	L	L	NS	DY
642	Cercidium floridum - Blue Palo Verde	10	M	M	RFS	VMS
644	Cercidium floridum - Blue Palo Verde	6	H	H	TOS	PS
645	Cercidium floridum - Blue Palo Verde	4	H	H	TOS	PS
647	Cercidium floridum - Blue Palo Verde	8	M	L	RFS	SR
649	Cercidium floridum - Blue Palo Verde	10	M	L	RFS	RT DW
651	Cercidium floridum - Blue Palo Verde	10	M	L	RFS	SZ DW
652	Cercidium floridum - Blue Palo Verde	6	M	M	RFS	SL MS
656	Cercidium floridum - Blue Palo Verde	12+	L	L	NS	DY
659	Cercidium floridum - Blue Palo Verde	12+	L	L	NS	SZ RT
667	Cercidium floridum - Blue Palo Verde	6	M	M	RFS	VMS
669	Cercidium floridum - Blue Palo Verde	6	M	M	TOS	MS
673	Cercidium floridum - Blue Palo Verde	18+	L	L	NS	SZ DW BL
674	Cercidium floridum - Blue Palo Verde	6	M	L	RFS	DW
676	Cercidium floridum - Blue Palo Verde	12+	M	L	RFS	SZ DW
678	Cercidium floridum - Blue Palo Verde	6	M	M	TOS	MS
679	Cercidium floridum - Blue Palo Verde	8	M	M	RFS	VMS LB
680	Cercidium floridum - Blue Palo Verde	8	M	M	RFS	VMS LB SZ
681	Cercidium floridum - Blue Palo Verde	8	M	M	RFS	VMS LB RT
682	Cercidium floridum - Blue Palo Verde	6	M	L	RFS	LB RT
683	Cercidium floridum - Blue Palo Verde	6	M	M	RFS	VMS DW
684	Cercidium floridum - Blue Palo Verde	8	M	L	RFS	DW
691	Cercidium floridum - Blue Palo Verde	12+	M	L	RFS	LB SZ
695	Cercidium floridum - Blue Palo Verde	12+	L	L	NS	RT DW
698	Cercidium floridum - Blue Palo Verde	12	M	L	RFS	SZ LB
700	Cercidium floridum - Blue Palo Verde	8	M	L	RFS	DW
703	Cercidium floridum - Blue Palo Verde	6	M	M	TOS	MS LB
707	Cercidium floridum - Blue Palo Verde	12+	L	L	NS	RT DW
710	Cercidium floridum - Blue Palo Verde	8	M	M	RFS	VMS LB
711	Cercidium floridum - Blue Palo Verde	6	M	M	RFS	VMS DW
714	Cercidium floridum - Blue Palo Verde	18+	L	L	NS	DY
719	Cercidium floridum - Blue Palo Verde	18+	L	L	NS	SZ RT
726	Cercidium floridum - Blue Palo Verde	12	M	L	RFS	SZ DW
729	Cercidium floridum - Blue Palo Verde	8	M	L	RFS	LB DW
730	Cercidium floridum - Blue Palo Verde	8	M	M	RFS	MS SO
732	Cercidium floridum - Blue Palo Verde	6	M	M	TOS	MS
733	Cercidium floridum - Blue Palo Verde	6	M	M	TOS	MS
736	Cercidium floridum - Blue Palo Verde	6	M	M	RFS	VMS SO
737	Cercidium floridum - Blue Palo Verde	12+	L	L	NS	DY
739	Cercidium floridum - Blue Palo Verde	12	L	L	NS	LE DW
742	Cercidium floridum - Blue Palo Verde	8	M	L	RFS	LB SO
743	Cercidium floridum - Blue Palo Verde	12+	L	L	NS	RT BL
744	Cercidium floridum - Blue Palo Verde	10	L	L	NS	RT BL
745	Cercidium floridum - Blue Palo Verde	6	M	L	RFS	LB
746	Cercidium floridum - Blue Palo Verde	6	M	M	TOS	MS
747	Cercidium floridum - Blue Palo Verde	6	M	L	RFS	LE DW
748	Cercidium floridum - Blue Palo Verde	6	M	M	TOS	MS
752	Cercidium floridum - Blue Palo Verde	6	M	M	TOS	MS
756	Cercidium floridum - Blue Palo Verde	6	M	M	RFS	VMS LB
757	Cercidium floridum - Blue Palo Verde	6	M	M	RFS	VMS LB
758	Cercidium floridum - Blue Palo Verde	6	M	M	RFS	VMS LB
759	Cercidium floridum - Blue Palo Verde	6	M	M	RFS	VMS LB
760	Cercidium floridum - Blue Palo Verde	12	L	L	NS	SR SO
762	Cercidium floridum - Blue Palo Verde	6	M	L	RFS	LE
763	Cercidium floridum - Blue Palo Verde	6	M	L	RFS	SL
764	Cercidium floridum - Blue Palo Verde	10	M	L	RFS	SL
765	Cercidium floridum - Blue Palo Verde	10	M	L	RFS	LB
768	Cercidium floridum - Blue Palo Verde	12+	L	L	NS	DW RT

ID NO.	DESCRIPTION	SIZE	VIA	TRAN	REC	COMMENTS
1039	Cercidium floridum - Blue Palo Verde	8	M	M	RFS	VMS SO
1040	Cercidium floridum - Blue Palo Verde	6	L	L	NS	SR SO
1043	Cercidium floridum - Blue Palo Verde	12+	L	L	NS	DY
1047	Cercidium floridum - Blue Palo Verde	8	H	M	RFS	MS SO
1048	Cercidium floridum - Blue Palo Verde	10	H	L	RFS	SZ LB
1049	Cercidium floridum - Blue Palo Verde	8	M	L	RFS	LE DW
1050	Cercidium floridum - Blue Palo Verde	10	M	L	RFS	SO DW
1051	Cercidium floridum - Blue Palo Verde	6	M	M	TOS	SO MS
1053	Cercidium floridum - Blue Palo Verde	12+	L	L	NS	DY
1080	Cercidium floridum - Blue Palo Verde	8	M	L	RFS	DW SO
1081	Cercidium floridum - Blue Palo Verde	6	M	L	RFS	DW SO
1082	Cercidium floridum - Blue Palo Verde	6	M	M	TOS	DW MS
1083	Cercidium floridum - Blue Palo Verde	8	M	L	RFS	DW SO
1084	Cercidium floridum - Blue Palo Verde	6	M	L	RFS	DW SO LB
1085	Cercidium floridum - Blue Palo Verde	12	M	L	RFS	DW SO LB
1091	Cercidium floridum - Blue Palo Verde	6	M	M	RFS	DW VMS
1093	Cercidium floridum - Blue Palo Verde	6	M	M	TOS	MS
1096	Cercidium floridum - Blue Palo Verde	12	M	L	RFS	SO LB
1097	Cercidium floridum - Blue Palo Verde	8	M	M	RFS	SO VMS
1099	Cercidium floridum - Blue Palo Verde	6	L	L	NS	LE RT
1101	Cercidium floridum - Blue Palo Verde	12	L	L	NS	RT DW
1104	Cercidium floridum - Blue Palo Verde	12+	M	L	RFS	SZ LE DW
1105	Cercidium floridum - Blue Palo Verde	12	M	L	RFS	SZ RT DW
1106	Cercidium floridum - Blue Palo Verde	12+	M	L	RFS	SZ RT LB
1108	Cercidium floridum - Blue Palo Verde	6	M	M	RFS	VMS SO LB
1113	Cercidium floridum - Blue Palo Verde	4		M	TOS	MS
1115	Cercidium floridum - Blue Palo Verde	4	M	M	TOS	MS SO
1116	Cercidium floridum - Blue Palo Verde	6	L	L	NS	BL DW
1118	Cercidium floridum - Blue Palo Verde	6	M	M	RFS	VMS SO
1119	Cercidium floridum - Blue Palo Verde	12	L	L	NS	DY
1121	Cercidium floridum - Blue Palo Verde	6	L	L	NS	DW SO
1125	Cercidium floridum - Blue Palo Verde	12	M	L	RFS	DW
1134	Cercidium floridum - Blue Palo Verde	8	L	L	NS	DW BL
1135	Cercidium floridum - Blue Palo Verde	12	L	L	NS	DW BL
1136	Cercidium floridum - Blue Palo Verde	10	L	L	NS	DW RT
1140	Cercidium floridum - Blue Palo Verde	4	H	H	TOS	PS
1142	Cercidium floridum - Blue Palo Verde	4	M	M	RFS	SO MS
1144	Cercidium floridum - Blue Palo Verde	4	H	H	TOS	PS
1145	Cercidium floridum - Blue Palo Verde	4	M	M	TOS	MS LB
1148	Cercidium floridum - Blue Palo Verde	12+	L	L	NS	DY
1149	Cercidium floridum - Blue Palo Verde	12+	L	L	NS	RT
1153	Cercidium floridum - Blue Palo Verde	18+	L	L	NS	RT DW
1155	Cercidium floridum - Blue Palo Verde	8	M	L	RFS	LB SZ
1160	Cercidium floridum - Blue Palo Verde	8	M	L	RFS	DW RT SO
1189	Cercidium floridum - Blue Palo Verde	18+	L	L	NS	LB RT DW
1194	Cercidium floridum - Blue Palo Verde	12+	L	L	NV	DY
1195	Cercidium floridum - Blue Palo Verde	6	H	M	TOS	MS
1212	Cercidium floridum - Blue Palo Verde	12	L	L	NS	RT SZ
1218	Cercidium floridum - Blue Palo Verde	6	M	M	TOS	MS LB
1219	Cercidium floridum - Blue Palo Verde	10	L	L	NS	RT LB
1222	Cercidium floridum - Blue Palo Verde	12+	L	L	NS	DY
1230	Cercidium floridum - Blue Palo Verde	8	L	L	NS	LB DW
1232	Cercidium floridum - Blue Palo Verde	12+	L	L	NS	DY
1237	Cercidium floridum - Blue Palo Verde	10	L	L	NS	DY
1238	Cercidium floridum - Blue Palo Verde	8	M	L	RFS	LB
1239	Cercidium floridum - Blue Palo Verde	6	M	M	TOS	MS
1240	Cercidium floridum - Blue Palo Verde	6	M	M	TOS	MS
1244	Cercidium floridum - Blue Palo Verde	12+	H	L	RFS	SZ
1247	Cercidium floridum - Blue Palo Verde	8	M	L	RFS	SZ LB

ID NO.	DESCRIPTION	SIZE	VIA	TRAN	REC	COMMENTS
343	Condalia globosa - Bitter Condalia	10	M	L	RFS	LB ST DW
472	Condalia globosa - Bitter Condalia	8	L	L	NS	DW RD
540	Condalia globosa - Bitter Condalia	6	M	L	RFS	LE TM

ID NO.	DESCRIPTION	SIZE	VIA	TRAN	REC	COMMENTS
761	Olneya tesota - Desert Ironwood	6	H	M	RFS	MS SO
1045	Olneya tesota - Desert Ironwood	8	M	L	RFS	TM DW

ID NO.	DESCRIPTION	SIZE	VIA	TRAN	REC	COMMENTS
416	Zizyphus obtusifolia - Gray Thorn	6	M	M	RFS	MS TM
1117	Zizyphus obtusifolia - Gray Thorn	6	H	M	RFS	MS LB

ID NO.	DESCRIPTION	SIZE	VIA	TRAN	REC	COMMENTS
122	Cercidium microphyllum - Palo Verde	8	H	L	RFS	SL
123	Cercidium microphyllum - Palo Verde	12	L	L	NS	SL DW
124	Cercidium microphyllum - Palo Verde	12+	L	L	NS	SL DW
125	Cercidium microphyllum - Palo Verde	18+	L	L	NS	SL DW
127	Cercidium microphyllum - Palo Verde	10	L	L	NS	DW SL
153	Cercidium microphyllum - Palo Verde	6	L	L	NS	DY
161	Cercidium microphyllum - Palo Verde	6	M	M	RFS	LE VMS
163	Cercidium microphyllum - Palo Verde	12+	M	L	RFS	SZ RT
175	Cercidium microphyllum - Palo Verde	6	H	H	RFS	PS
176	Cercidium microphyllum - Palo Verde	12+	H	L	RFS	SZ
177	Cercidium microphyllum - Palo Verde	6	H	H	RFS	PS
193	Cercidium microphyllum - Palo Verde	6	H	H	RFS	PS
195	Cercidium microphyllum - Palo Verde	12	H	L	RFS	SZ
197	Cercidium microphyllum - Palo Verde	12+	L	L	NS	DY
198	Cercidium microphyllum - Palo Verde	12	H	M	RFS	VMS SZ
252	Cercidium microphyllum - Palo Verde	18+	M	L	RFS	SL SZ
253	Cercidium microphyllum - Palo Verde	18+	L	L	NS	RT BL
283	Cercidium microphyllum - Palo Verde	8	M	L	RFS	DW SL
284	Cercidium microphyllum - Palo Verde	8	M	L	RFS	DW SL
285	Cercidium microphyllum - Palo Verde	18+	M	L	RFS	DW SL SZ
286	Cercidium microphyllum - Palo Verde	8	M	L	RFS	DW SL
287	Cercidium microphyllum - Palo Verde	8	M	L	RFS	DW SL
288	Cercidium microphyllum - Palo Verde	8	M	L	RFS	DW SL
317	Cercidium microphyllum - Palo Verde	6	M	M	RFS	MS
319	Cercidium microphyllum - Palo Verde	12+	H	L	RFS	SZ
320	Cercidium microphyllum - Palo Verde	10	H	M	RFS	SZ VMS
321	Cercidium microphyllum - Palo Verde	12+	M	L	RFS	SZ
324	Cercidium microphyllum - Palo Verde	4	H	H	RFS	PS
327	Cercidium microphyllum - Palo Verde	6	L	L	NS	DW
328	Cercidium microphyllum - Palo Verde	12	M	L	RFS	SZ
340	Cercidium microphyllum - Palo Verde	10	M	M	RFS	VMS SO
344	Cercidium microphyllum - Palo Verde	10	L	L	NS	BL
348	Cercidium microphyllum - Palo Verde	4	M	M	RFS	MS
371	Cercidium microphyllum - Palo Verde	6	M	M	RFS	MS LB
374	Cercidium microphyllum - Palo Verde	6	H	H	RFS	PS
375	Cercidium microphyllum - Palo Verde	6	H	M	RFS	MS LB
377	Cercidium microphyllum - Palo Verde	8	H	M	RFS	MS LB
378	Cercidium microphyllum - Palo Verde	12+	M	L	RFS	SZ
392	Cercidium microphyllum - Palo Verde	12+	L	L	NS	SR SL
393	Cercidium microphyllum - Palo Verde	6	M	M	RFS	VMS LB
412	Cercidium microphyllum - Palo Verde	12	M	L	RFS	DW SZ
414	Cercidium microphyllum - Palo Verde	6	M	M	RFS	VMS LE
415	Cercidium microphyllum - Palo Verde	12	L	L	NS	RT DW
443	Cercidium microphyllum - Palo Verde	10	M	M	RFS	MS LB
491	Cercidium microphyllum - Palo Verde	18+	L	L	NS	DY
492	Cercidium microphyllum - Palo Verde	18+	M	L	RFS	SZ
502	Cercidium microphyllum - Palo Verde	6	M	M	RFS	VMS
505	Cercidium microphyllum - Palo Verde	6	H	H	RFS	PS
509	Cercidium microphyllum - Palo Verde	8	M	M	RFS	VMS LB
510	Cercidium microphyllum - Palo Verde	18+	L	L	NS	DY
541	Cercidium microphyllum - Palo Verde	6	H	M	RFS	MS LB
570	Cercidium microphyllum - Palo Verde	10	L	L	NS	SO
612	Cercidium microphyllum - Palo Verde	12	L	L	NS	DY
664	Cercidium microphyllum - Palo Verde	10	L	L	NS	SZ RT
665	Cercidium microphyllum - Palo Verde	10	L	L	NS	DW
671	Cercidium microphyllum - Palo Verde	10	M	M	RFS	DW VMS
672	Cercidium microphyllum - Palo Verde	10	M	L	RFS	SZ LB
692	Cercidium microphyllum - Palo Verde	8	M	M	RFS	MS LB
693	Cercidium microphyllum - Palo Verde	6	M	M	RFS	VMS LB
723	Cercidium microphyllum - Palo Verde	10	L	L	NS	DY
782	Cercidium microphyllum - Palo Verde	12	M	L	RFS	SZ SO
832	Cercidium microphyllum - Palo Verde	10	M	L	RFS	LE SO
835	Cercidium microphyllum - Palo Verde	12+	L	L	NS	DW SZ
865	Cercidium microphyllum - Palo Verde	4	H	M	RFS	MS
875	Cercidium microphyllum - Palo Verde	12	M	L	RFS	SZ LB
876	Cercidium microphyllum - Palo Verde	12+	M	L	RFS	SZ LB DW
883	Cercidium microphyllum - Palo Verde	4	H	M	RFS	MS LB
916	Cercidium microphyllum - Palo Verde	10	M	L	RFS	DW SL
917	Cercidium microphyllum - Palo Verde	12+	L	L	NS	DW SL
918	Cercidium microphyllum - Palo Verde	12	M	L	RFS	DW SZ
919	Cercidium microphyllum - Palo Verde	8	L	L	NS	DW SL
922	Cercidium microphyllum - Palo Verde	10	L	L	NS	SR DW
923	Cercidium microphyllum - Palo Verde	12	M	L	RFS	SZ
953	Cercidium microphyllum - Palo Verde	8	L	L	NS	DW RT
954	Cercidium microphyllum - Palo Verde	8	L	L	NS	DW RT
956	Cercidium microphyllum - Palo Verde	8	H	M	RFS	MS TM
957	Cercidium microphyllum - Palo Verde	6	M	M	RFS	MS LE
962	Cercidium microphyllum - Palo Verde	12+	L	L	NS	SL RT SZ
986	Cercidium microphyllum - Palo Verde	8	M	L	RFS	SL DW
988	Cercidium microphyllum - Palo Verde	12	M	L	RFS	SL DW LB
989	Cercidium microphyllum - Palo Verde	12+	L	L	NS	DY
990	Cercidium microphyllum - Palo Verde	6	L	L	NS	SL
991	Cercidium microphyllum - Palo Verde	10	L	L	NS	SL
992	Cercidium microphyllum - Palo Verde	6	L	L	NS	SL
993	Cercidium microphyllum - Palo Verde	6	L	L	NS	SL
1111	Cercidium microphyllum - Palo Verde	12	L	L	NS	DY
1156	Cercidium microphyllum - Palo Verde	12	L	L	NS	DW RT
1210	Cercidium microphyllum - Palo Verde	4	H	H	RFS	PS
1226	Cercidium microphyllum - Palo Verde	12	M	L	RFS	SZ
1227	Cercidium microphyllum - Palo Verde	6	M	M	RFS	PS
1251	Cercidium microphyllum - Palo Verde	6	H	H	RFS	PS
1253	Cercidium microphyllum - Palo Verde	12	L	L	NV	MT BL PROX

ID NO.	DESCRIPTION	SIZE	VIA	TRAN	REC	COMMENTS
100	Prosopis velutina - Native Mesquite	12	M	M	RFS	SL VMS
152	Prosopis velutina - Native Mesquite	18+	L	L	NS	DW BL
155	Prosopis velutina - Native Mesquite	12	M	L	RFS	SZ DW
164	Prosopis velutina - Native Mesquite	10	M	M	RFS	VMS
165	Prosopis velutina - Native Mesquite	12+	M	L	RFS	SZ DW
167	Prosopis velutina - Native Mesquite	8	M	M	RFS	VMS DW SL
168	Prosopis velutina - Native Mesquite	12	L	L	NS	RD DW
182	Prosopis velutina - Native Mesquite	12	M	L	RFS	DW SZ
185	Prosopis velutina - Native Mesquite	12+	L	L	NS	LE DW
215	Prosopis velutina - Native Mesquite	12+	M	L	RFS	DW LB SZ
293	Prosopis velutina - Native Mesquite	6	M	M	RFS	MS TD
303	Prosopis velutina - Native Mesquite	18+	L	L	NS	BL DW SZ
309	Prosopis velutina - Native Mesquite	8	H	H	RFS	PS
311	Prosopis velutina - Native Mesquite	12+	L	L	NS	LB DW
331	Prosopis velutina - Native Mesquite	8	M	M	RFS	VMS DW TM
342	Prosopis velutina - Native Mesquite	8	M	M	RFS	VMS DW
354	Prosopis velutina - Native Mesquite	18+	L	L	NS	DW TM SZ
355	Prosopis velutina - Native Mesquite	12	L	L	NS	DW TM SZ
368	Prosopis velutina - Native Mesquite	18+	L	L	NS	SZ MT
382	Prosopis velutina - Native Mesquite	8	M	M	RFS	VMS DW SZ
385	Prosopis velutina - Native Mesquite	4	M	M	RFS	MS
401	Prosopis velutina - Native Mesquite	12+	M	L	RFS	SZ
422	Prosopis velutina - Native Mesquite	10	L	L	NS	LE DW
454	Prosopis velutina - Native Mesquite	8	L	L	NS	BL DW
479	Prosopis velutina - Native Mesquite	10	M	L	RFS	LB DW
494	Prosopis velutina - Native Mesquite	18+	L	L	NS	DW LB
504	Prosopis velutina - Native Mesquite	18+	L	L	NS	MT DW SZ
568	Prosopis velutina - Native Mesquite	12+	M	L	RFS	DW MT SZ
595	Prosopis velutina - Native Mesquite	4	H	H	RFS	PS
599	Prosopis velutina - Native Mesquite	4	M	M	RFS	MS
603	Prosopis velutina - Native Mesquite	12+	L	L	NS	SR SL
606	Prosopis velutina - Native Mesquite	12	L	L	NS	DW
617	Prosopis velutina - Native Mesquite	12+	L	L	NS	DW RT
643	Prosopis velutina - Native Mesquite	12+	L	L	NS	DY
661	Prosopis velutina - Native Mesquite	18+	L	L	NS	DW RT BL
663	Prosopis velutina - Native Mesquite	12+	M	L	RFS	SZ LB
677	Prosopis velutina - Native Mesquite	12	L	L	NS	LE DW
687	Prosopis velutina - Native Mesquite	8	M	L	RFS	RT DW
688	Prosopis velutina - Native Mesquite	12+	L	L	NS	BL DW SR
689	Prosopis velutina - Native Mesquite	6	M	L	RFS	LE DW
705	Prosopis velutina - Native Mesquite	12+	M	L	RFS	LB DW BL
716	Prosopis velutina - Native Mesquite	12+	L	L	NS	DW RT
754	Prosopis velutina - Native Mesquite	12	L	L	NS	DW SO
826	Prosopis velutina - Native Mesquite	12+	L	L	NS	DW LB SO
855	Prosopis velutina - Native Mesquite	10	M	L	RFS	SL DW SO
903	Prosopis velutina - Native Mesquite	10	L	L	NS	DW LE
904	Prosopis velutina - Native Mesquite	12+	L	L	NS	DY
915	Prosopis velutina - Native Mesquite	10	L	L	NS	DW RT
920	Prosopis velutina - Native Mesquite	12	L	L	NS	DY
921	Prosopis velutina - Native Mesquite	10	L	L	NS	DY
950	Prosopis velutina - Native Mesquite	12	L	L	NS	DW TM LE
995	Prosopis velutina - Native Mesquite	10	L	L	NS	SL
996	Prosopis velutina - Native Mesquite	12+	M	L	RFS	LB DW SZ
999	Prosopis velutina - Native Mesquite	12	L	L	NS	DW BL
1004	Prosopis velutina - Native Mesquite	12+	M	L	RFS	MT DW SZ
1088	Prosopis velutina - Native Mesquite	12+	M	L	RFS	DW SZ LB
1103	Prosopis velutina - Native Mesquite	18+	M	L	RFS	SZ LB DW
1139	Prosopis velutina - Native Mesquite	8	M	L	RFS	DW LB
1152	Prosopis velutina - Native Mesquite	12+	L	L	NS	BL DW
1157	Prosopis velutina - Native Mesquite	10	L	L	NS	DW RT SO
1164	Prosopis velutina - Native Mesquite	8	M	L	RFS	DW
1165	Prosopis velutina - Native Mesquite	10	L	L	NS	DW RT
1209	Prosopis velutina - Native Mesquite	12+	M	L	RFS	DW LB LE
1215	Prosopis velutina - Native Mesquite	18+	L	L	NS	DW RT
1223	Prosopis velutina - Native Mesquite	10	L	L	NS	DY
1224	Prosopis velutina - Native Mesquite	12	L	L	NS	DY
1229	Prosopis velutina - Native Mesquite	12	M	L	RFS	LB DW
1233	Prosopis velutina - Native Mesquite	12+	M	L	RFS	DW
1235	Prosopis velutina - Native Mesquite	12+	L	L	NS	DW RT SZ
1236	Prosopis velutina - Native Mesquite	12+	L	L	NS	DW LB SZ
1242	Prosopis velutina - Native Mesquite	6	M	L	RFS	LE LB
1243	Prosopis velutina - Native Mesquite	12	M	L	RFS	SZ LB
1249	Prosopis velutina - Native Mesquite	12	L	L	NS	MT DW
1250	Prosopis velutina - Native Mesquite	6	M	L	RFS	LE DW