



NORTHEAST - AERIAL



NORTHEAST - PERSPECTIVE



NORTHWEST - AERIAL



NORTHWEST - PERSPECTIVE

1900930

06/17/19

CONCEPTUAL DESIGN - RENDERINGS

Ventana Medical Systems, Inc. CUP and Building Air Handling Conversion

Oro Valley, AZ | 10 June 2019



SOUTHEAST - AERIAL



SOUTHEAST - PERSPECTIVE



SOUTHWEST - AERIAL



SOUTHWEST - PERSPECTIVE

1900930

06/17/19

CONCEPTUAL DESIGN - RENDERINGS



VISION
GLASS

MFG: VIRACON
COLOR: CLEAR
LOCATION:
NORTH FACADE
WINDOWS
LIGHT REFLECTANCE
VALUE (LRV) = 14%



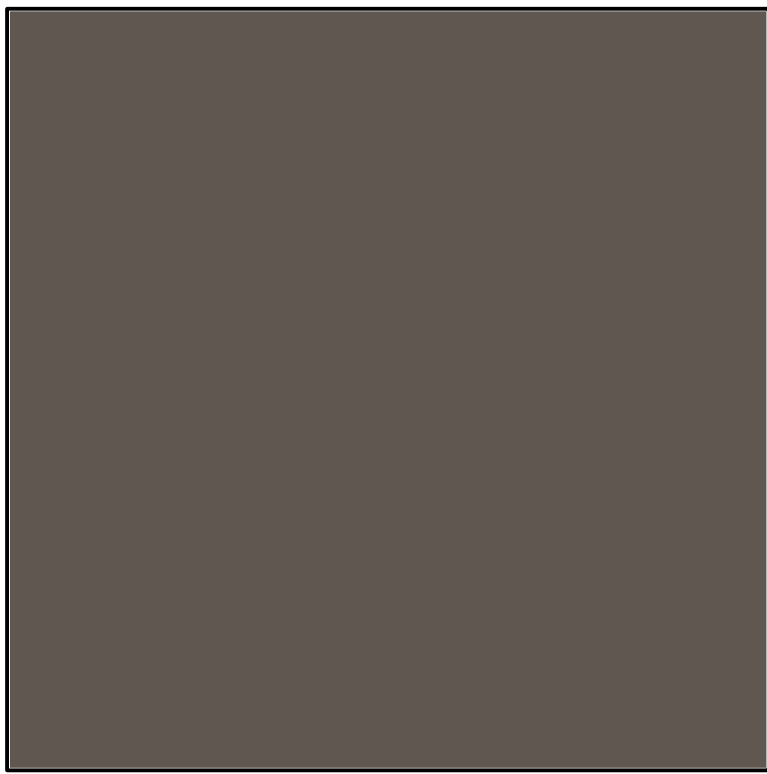
SEMI
OPAQUE

MFG: KALWALL
COLOR: WHITE
LOCATION:
NORTH, SOUTH, EAST,
WEST FACADE
WINDOW SYSTEM
LIGHT REFLECTANCE
VALUE (LRV) = 40%



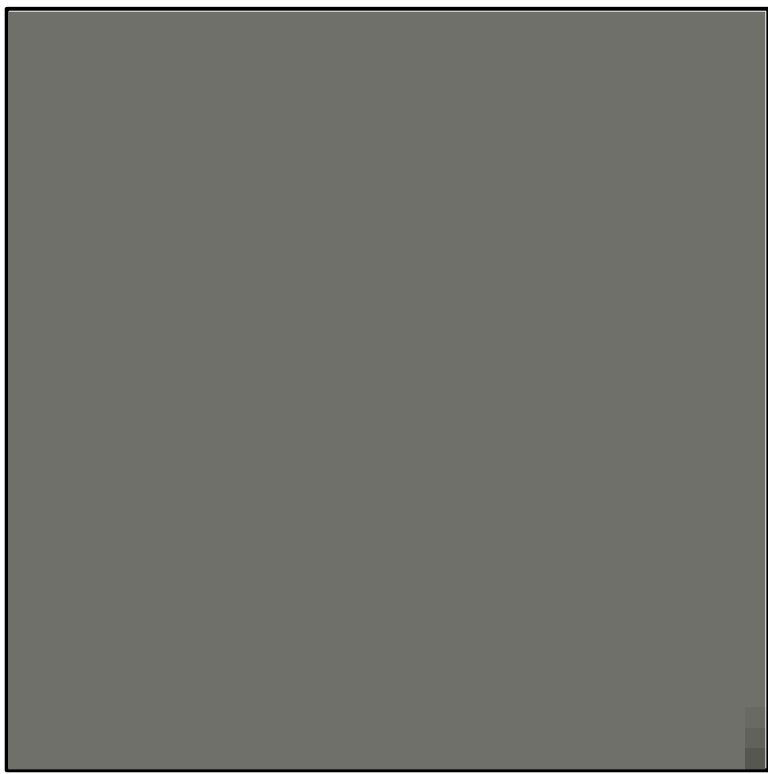
CONCRETE
MASONRY

MFG: OLD CASTLE
SUPERLITE
COLOR: SOUTHWEST
GOLD (SPLIT FACE)
LOCATION:
NORTH, SOUTH, EAST,
WEST PRIMARY
FACADE
LIGHT REFLECTANCE
VALUE (LRV) = 42%



METAL
PANEL

MFG:
COLOR: RAL7022
DARK GRAY
LOCATION:
EQUIPMENT YARD
SCREEN WALL
(ACOUSTICAL PANEL)
LIGHT REFLECTANCE
VALUE (LRV) = 7%



METAL
PANEL

MFG:
COLOR: RAL7033
MEDIUM GRAY
LOCATION:
BUILDING FACADE
(HORIZONTAL DEEP
PROFILE PANEL)
ROOFTOP SCREEN
WALL (HORIZONTAL
DEEP PROFILE
PANEL) PERFORATED
EQUIPMENT YARD
SCREEN WALL
RECESSED ACCENT
(ACOUSTICAL PANEL/
LOUVER)
LIGHT REFLECTANCE
VALUE (LRV) = 22%

06/17/19
1900930

CONCEPTUAL DESIGN - COLOR BOARD

06/17/19

1900930

**DETAIL DESIGN
PROGRESS SET**

No.	Description	Date
-----	-------------	------

Notice of Extended Payment Provision:
This contract allows the owner to make payment within 60 days after certification and approval of billings and estimates for progress payments, within 60 days after certification and approval of billings and estimates for release of retention and within 60 days after certification and approval of billings and estimates for final payment.

FIRST FLOOR PLAN

**NOT FOR
CONSTRUCTION**
**DETAIL DESIGN
PROGRESS SET**

Project Number 17026

Date 06/10/19

Drawn By xxx

Checked By xxx

A-B7c-201

Scale As indicated

GENERAL NOTES

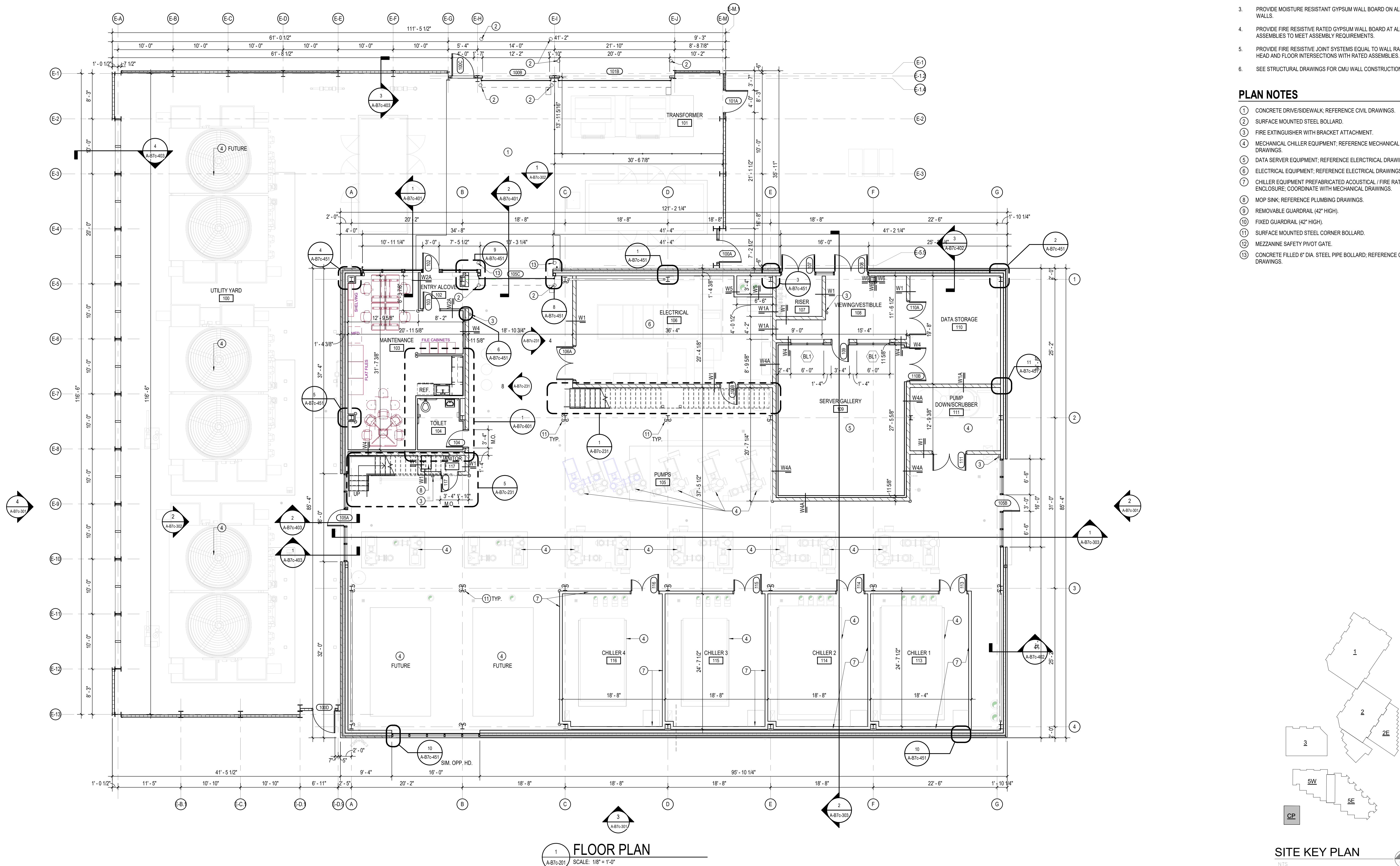
- COORDINATE THE WORK OF EACH TRADE WITH THE WORK OF OTHER TRADES.
- ALL WORK IS TO BE COMPLETED IN STRICT ACCORDANCE WITH ALL APPLICABLE CODES, ORDINANCES, RULES, REGULATIONS AND STANDARDS INCLUDING, BUT NOT LIMITED TO THOSE LISTED ON THE COVER SHEET.
- ALL DIMENSIONS ARE FROM CENTERLINE OF STRUCTURE, FACE OF STUD. FACE OF MASONRY, OR FACE OF EXISTING. ANY DIMENSIONS NOT SHOWN OR DEEMED QUESTIONABLE ARE TO BE VERIFIED BY ARCHITECT. DO NOT SCALE DRAWINGS.
- REFER TO DRAWING A010 FOR EXTERIOR WALL, ROOF, AND FLOOR ASSEMBLIES.
- REFER TO DRAWING A011 FOR INTERIOR WALL ASSEMBLIES.
- GROUND FLOOR ELEVATION: +0'-0" = XXX.XX ESL.
- PROVIDE FIRE RESISTANT TREATED WOOD BLOCKING SUPPORTS AS REQUIRED FOR ALL SURFACE MOUNTED ITEMS.
- PROVIDE MISCELLANEOUS SUPPORT FOR ALL CEILING SUSPENDED ITEMS.
- DOOR AND FRAME NUMBERS CORRESPOND TO ROOM NUMBERS. WHERE MORE THAN ONE DOOR OCCURS IN A ROOM, A SUFFIX HAS BEEN ADDED (E.G. 100A). SEE DIVISION 600 DRAWINGS FOR DOOR SCHEDULE.
- ALL DOORS ARE TO BE LOCATED 6" FROM ADJACENT WALL, UNLESS NOTED OTHERWISE.
- APPLY SEALANT AT ALL JUNCTURES BETWEEN DIFFERENT MATERIALS (E.G. MASONRY TO GYPSUM WALL BOARD) UTILIZING THE APPROPRIATE TYPE PER SPECIFICATIONS. COLOR TO BE SELECTED BY ARCHITECT.
- APPLY SEALANT AT ALL COUNTERTOPS AND BACKSPASHES AT JUNCTURE WITH WALL.
- ALL DOORS MUST BE INSTALLED WITH AT LEAST THE MINIMUM MANEUVERING CLEARANCE AT THE DOOR APPROACH PER THE MOST CURRENT AMERICANS WITH DISABILITIES ACT.
- ALL INTERIOR WALLS ARE TO EXTEND TO DECK OR BOTTOM OF TRUSS FRAMING UNLESS NOTED OTHERWISE IN THE REFLECTED CEILING PLANS.
- GYPSUM WALLBOARD AND SOUND ATTENUATION BLANKETS ARE TO EXTEND TO DECK WHERE SEPARATING ROOMS UNLESS NOTED OTHERWISE. MATERIALS ARE TO BE CUT TO CONFORM TO THE PROFILE OF THE DECK, AND SEALED APPROPRIATELY UTILIZING SEALANT TYPE PER SPECIFICATIONS.

WALL TYPE NOTES

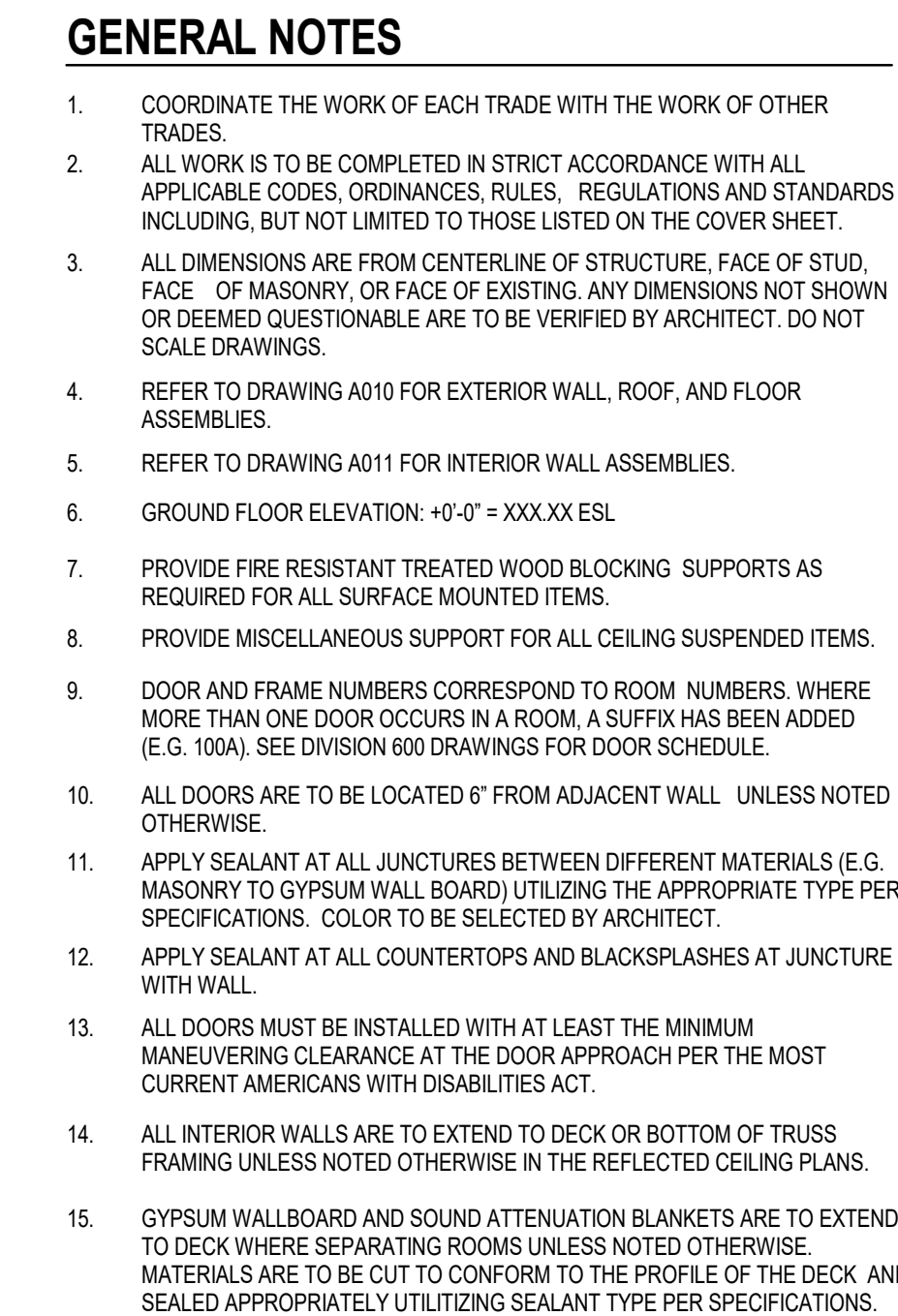
- REF. SHEET A-B7c-011 FOR INTERIOR WALL TYPES.
W1 — PARTITION TYPE
6" — CONSTRUCTION HEIGHT OF WALL TYPE (ABOVE CEILING)
- ALL WALLS TO EXTEND TO DECK UNLESS NOTED OTHERWISE.
- PROVIDE MOISTURE RESISTANT GYPSUM WALL BOARD ON ALL WET AREA WALLS.
- PROVIDE FIRE RESISTIVE RATED GYPSUM WALL BOARD AT ALL RATED ASSEMBLIES TO MEET ASSEMBLY REQUIREMENTS.
- PROVIDE FIRE RESISTIVE JOINT SYSTEMS EQUAL TO WALL RATING AT ALL HEAD AND FLOOR INTERSECTIONS WITH RATED ASSEMBLIES.
- SEE STRUCTURAL DRAWINGS FOR CMU WALL CONSTRUCTION.

PLAN NOTES

- CONCRETE DRIVE/SIDEWALK; REFERENCE CIVIL DRAWINGS.
- SURFACE MOUNTED STEEL BOLLARD.
- FIRE EXTINGUISHER WITH BRACKET ATTACHMENT.
- MECHANICAL CHILLER EQUIPMENT; REFERENCE MECHANICAL DRAWINGS.
- DATA SERVER EQUIPMENT; REFERENCE ELECTRICAL DRAWINGS.
- ELECTRICAL EQUIPMENT; REFERENCE ELECTRICAL DRAWINGS.
- CHILLER EQUIPMENT PREFABRICATED ACOUSTICAL / FIRE RATED ENCLOSURE; COORDINATE WITH MECHANICAL DRAWINGS.
- MOP SINK; REFERENCE PLUMBING DRAWINGS.
- REMOVABLE GUARDRAIL (42" HIGH).
- FIXED GUARDRAIL (42" HIGH).
- SURFACE MOUNTED STEEL CORNER BOLLARD.
- MEZZANINE SAFETY PIVOT GATE.
- CONCRETE FILLED 6" DIA. STEEL PIPE BOLLARD; REFERENCE CIVIL DRAWINGS.



1 FLOOR PLAN
SCALE: 1/8" = 1'-0"



1. REF. SHEET A-B7C-011 FOR INTERIOR WALL TYPES.

2. ALL WALLS TO EXTEND TO DECK UNLESS NOTED OTHERWISE.

3. PROVIDE MOISTURE RESISTANT GYPSUM WALL BOARD ON ALL WET AREA WALLS.

4. PROVIDE FIRE RESISTIVE RATED GYPSUM WALL BOARD AT ALL RATED ASSEMBLIES TO MEET ASSEMBLY REQUIREMENTS.

5. PROVIDE FIRE RESISTIVE JOINT SYSTEMS EQUAL TO WALL RATING AT ALL HEAD AND FLOOR INTERSECTIONS WITH RATED ASSEMBLIES.

6. SEE STRUCTURAL DRAWINGS FOR CMU WALL CONSTRUCTION.

- ① CONCRETE DIVESTIDEWALK; REFERENCE CIVIL DRAWINGS.
- ② SURFACE MOUNTED STEEL BOLLARD.
- ③ FIRE EXTINGUISHER WITH BRACKET ATTACHMENT.
- ④ MECHANICAL CHILLER EQUIPMENT; REFERENCE MECHANICAL DRAWINGS.
- ⑤ DATA SERVER EQUIPMENT; REFERENCE ELECTRICAL DRAWINGS.
- ⑥ ELECTRICAL EQUIPMENT; REFERENCE ELECTRICAL DRAWINGS.
- ⑦ CHILLER EQUIPMENT PREFABRICATED ACoustICAL / FIRE RATED ENCLOSURE; COORDINATE WITH MECHANICAL DRAWINGS.
- ⑧ MOP SINK; REFERENCE PLUMBING DRAWINGS.
- ⑨ REMOVABLE GUARDRAIL (42" HIGH).
- ⑩ FIXED GUARDRAIL (42" HIGH).
- ⑪ SURFACE MOUNTED STEEL CORNER BOLLARD.
- ⑫ MEZZANINE SAFETY PIVOT GATE.
- ⑬ CONCRETE FILLED 6" DIA. STEEL PIPE BOLLARD; REFERENCE CIVIL DRAWINGS.



1910 INNOVATION PARK
DRIVE
ORO VALLEY, ARIZONA 85755

1900930

[illegible]

MEZZANINE FLOOR
PLAN

DETAIL DESIGN
PROGRESS SET

A-B7c-202

Scale	As indicated
-------	--------------

Scale	1/4" = 1'-0"
-------	--------------

