

AS-BUILT CERTIFICATION:

LANDSCAPE

I HEREBY CERTIFY THAT THE PLANTING AND IRRIGATION HAS BEEN DESIGNED IN ACCORDANCE WITH THE LANDSCAPING AND PLANTING GUIDELINES FOR PUBLIC SEWERS PER PIMA COUNTY RWMO ENGINEERING DESIGN STANDARDS SUBSECTION 7.7

REGISTERED LANDSCAPE ARCHITECT

DATE

REGISTERED LAND SURVEYOR

I HEREBY CERTIFY THAT THE RECORD DRAWING MEASUREMENTS AS SHOWN HEREON WERE MADE UNDER MY SUPERVISION OR AS NOTED AND ARE CORRECT TO THE BEST OF MY KNOWLEDGE AND BELIEF.

REGISTERED LAND SURVEYOR

DATE

REGISTERED LAND SURVEYOR

I HEREBY CERTIFY THAT THE RECORD DRAWING MEASUREMENTS PROVIDED ON THIS DRAWING WERE BASED ON AN AS-BUILT SURVEY CONDUCTED UNDER MY SUPERVISION AND ACCURATELY REFLECTS EXISTING FIELD CONDITIONS TO THE BEST OF MY KNOWLEDGE AND BELIEF.

REGISTERED LAND SURVEYOR

DATE

REGISTRATION NUMBER

EXPIRES

ENGINEER'S STANDARD DETAIL'S DISCLAIMER:

COMPLYING WITH THE ARIZONA STATE BOARD OF TECHNICAL REGISTRATIONS, SUBSTANTIVE POLICY STATEMENT REGARDING SEALING OF STANDARD DETAIL'S, THE STANDARD DETAIL'S USED IN THE DESIGN OF THIS PROJECT HAVE BEEN FORMALLY ADOPTED BY THE AGENCIES THAT PREPARED THEM IN VIEW OF THEIR ACCEPTANCE FOR THIS PROJECT AND FINISHES NO NEED FOR ALTERNATION.

BASIS OF BEARINGS

THE BASIS OF BEARINGS FOR THIS PROJECT IS THE NORTH LINE OF THE NORTHEAST QUARTER OF SECTION 36, TOWNSHIP 11 SOUTH, RANGE 13 EAST, G. & S. M., TOWN OF ORO VALLEY, PIMA COUNTY, ARIZONA, SAID BEARING BEING N 89° 59' 40" E.

BASIS OF ELEVATIONS

THE BASIS OF ELEVATIONS FOR THIS PROJECT IS BEING THE 3.25' ALUMINUM DISK IN DIRT, HOLE 1.1' N. OF THE NORTH LINE OF THE NORTHEAST QUARTER OF SECTION 36, TOWNSHIP 11 SOUTH, RANGE 13 EAST, G. & S. M., TOWN OF ORO VALLEY, PIMA COUNTY, ARIZONA, SAID ELEVATION BEING 2686.27 FEET NAVD 83 DATUM.

PERMITTING DIVISION-BUILDING CODES

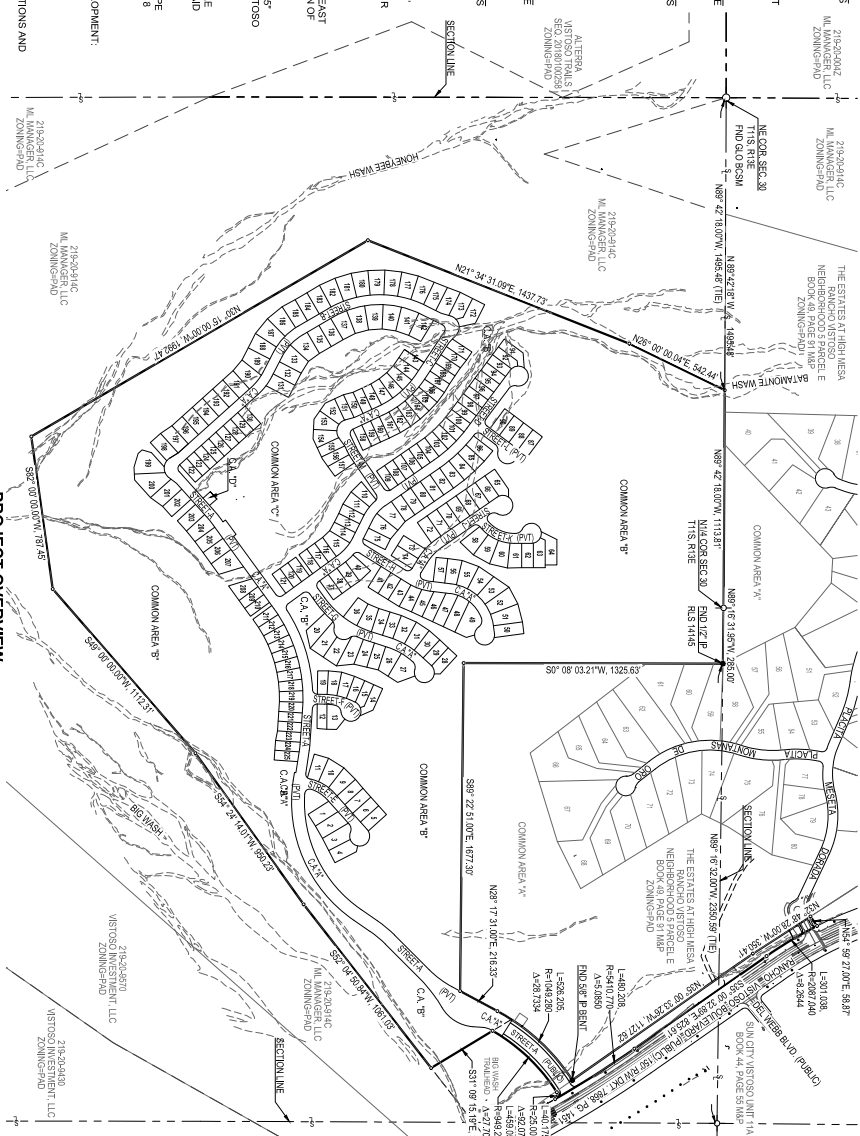
THE FOLLOWING CODES AND STANDARDS SHALL BE APPLICABLE TO THIS DEVELOPMENT:

- 2011 NATIONAL ELECTRIC CODE
- 2011 NATIONAL PLUMBING CODE
- 2011 NATIONAL MECHANICAL CODE
- 2011 NATIONAL FIRE PROTECTION ASSOCIATION (NFPA) STANDARD SPECIFICATIONS AND DETAILS FOR PUBLIC IMPROVEMENTS
- 2010 TOWN OF ORO VALLEY DRAINAGE CRITERIA MANUAL
- 2010 TOWN OF ORO VALLEY DRAINAGE CRITERIA MANUAL
- 2010 TOWN OF ORO VALLEY ZONING CODE, CURRENT REVISED

STANDARD DETAILS

PAV STANDARD DETAIL	PAV STANDARD DETAIL
103 SURVEY MONUMENT	206 CONCRETE CURB - TYPE 2 WEDGE
105 HANDMADE CAST ASPHALT	207 CONCRETE CURB TRANSITION
107 CONCRETE SIDEWALK	211 CONCRETE CURB CONNECTION
203 NEW TO EXISTING SIDEWALK	212 CONCRETE CURB CONNECTION
207 CURB ACCESS RAMP - TYPE 2 SINGLE VERTICAL	308 CATCH BASIN - TYPE 3
209 CONCRETE CURB - TYPE 2 SINGLE VERTICAL	404 CATCH BASIN - TYPE 3

FINAL SITE PLAN, GRADING PLAN, PRIVATE SEWER IMPROVEMENT PLAN AND PRIVATE STREET IMPROVEMENT PLAN FOR TRANQUILLO AT RANCHO VISTOSO TO SERVE LOTS 1 THRU 225, COMMON AREA "A" (PRIVATE STREETS), COMMON AREA "B" (OPEN SPACE), COMMON AREA "C" (DRAINAGE/OPEN SPACE/RECREATION) AND COMMON AREA "D" (PRIVATE LIFT STATION) A PORTION OF SECTIONS 19 & 30, T11S, R14E, G&S&M TOWN OF ORO VALLEY, PIMA COUNTY, ARIZONA



PROJECT OVERVIEW

SCALE: 1"=500'

PIMA COUNTY RWMO STANDARD DETAILS
103 SURVEY MONUMENT
105 HANDMADE CAST ASPHALT
107 CONCRETE SIDEWALK
203 NEW TO EXISTING SIDEWALK
207 CURB ACCESS RAMP - TYPE 2 SINGLE VERTICAL
209 CONCRETE CURB - TYPE 2 SINGLE VERTICAL

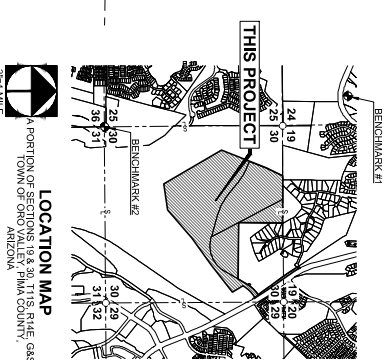
OWNER/DEVELOPER
TRANQUILLO AT RANCHO VISTOSO
11400 W. BROADWAY BLVD.
PHOENIX, ARIZONA 85027
(602) 979-8013
TRANQUILLO@tranquillo.com

ENGINEER
TRANQUILLO AT RANCHO VISTOSO
11400 W. BROADWAY BLVD.
PHOENIX, ARIZONA 85027
(602) 979-8013
TRANQUILLO@tranquillo.com

ADMINISTRATIVE ADDRESS
TRANQUILLO AT RANCHO VISTOSO
11400 W. BROADWAY BLVD.
PHOENIX, ARIZONA 85027
(602) 979-8013
TRANQUILLO@tranquillo.com

ACCEPTANCE
TOWN OF ORO VALLEY, TOWN ENGINEER
DATE

PROJECT NO. PXXXXXX
RELATED CASE #
PCZXXX-XXX



LOCATION MAP

A PORTION OF SECTION 19 & 30, T11S, R14E, G&S&M TOWN OF ORO VALLEY, PIMA COUNTY, ARIZONA

SHEET INDEX

1. COVER SHEET
2. FINAL SITE PLAN NOTES & LEGEND
3. IMPROVEMENT PLAN NOTES & LEGEND
4. HORIZONTAL CONTROL PLAN
5. PRIVATE SEWER AND STREET PLAN AND PROFILE
6. GRAVITY DRAIN PROFILES AND DETAIL SHEET
7. STORM DRAIN PROFILES AND DETAIL SHEET
8. TYPICAL SECTIONS & DETAILS

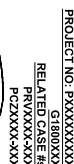
BACKWATER VALVE LIST

NO.	LOCATION	DATE
1	11400 W. BROADWAY BLVD.	11/11/11
2	11400 W. BROADWAY BLVD.	11/11/11
3	11400 W. BROADWAY BLVD.	11/11/11
4	11400 W. BROADWAY BLVD.	11/11/11
5	11400 W. BROADWAY BLVD.	11/11/11
6	11400 W. BROADWAY BLVD.	11/11/11
7	11400 W. BROADWAY BLVD.	11/11/11
8	11400 W. BROADWAY BLVD.	11/11/11
9	11400 W. BROADWAY BLVD.	11/11/11
10	11400 W. BROADWAY BLVD.	11/11/11

ACCEPTANCE

(FOR F.S.P. ELEMENTS)

PLANNING & ZONING ADMINISTRATOR
DATE
TOWN ENGINEER
DATE
ORO VALLEY WATER UTILITY DIRECTOR
DATE
TOWN CLERK
DATE



Engineering, Planning, Surveying
Civil, Mechanical, Electrical, and
Environmental Engineering
4444 E. BROADWAY BLVD.
TUCSON, ARIZONA 85711
(520) 881-7480

TRANQUILLO AT RANCHO VISTOSO
LOTS 1 THROUGH 225 AND COMMON AREA "A" (PRIVATE STREETS), COMMON AREA "B" (OPEN SPACE), COMMON AREA "C" (DRAINAGE/OPEN SPACE/RECREATION) AND COMMON AREA "D" (PRIVATE LIFT STATION) A PORTION OF SECTIONS 19 & 30, T11S, R14E, G&S&M TOWN OF ORO VALLEY, PIMA COUNTY, ARIZONA

FINAL SITE PLAN, GRADING PLAN, PRIVATE SEWER IMPROVEMENT PLAN AND PRIVATE STREET IMPROVEMENT PLAN
COVER SHEET

DATE	BY
11/11/11	TRANQUILLO

DATE	BY
11/11/11	TRANQUILLO