

I HEREBY CERTIFY THAT THE PLANTING AND IRRIGATION HAS BEEN DESIGNED IN ACCORDANCE WITH THE LANDSCAPING AND PLANTING GUIDELINES FOR PUBLIC SEWERS PER PIMA COUNTY RWRD ENGINEERING DESIGN STANDARDS SUBSECTION 7.7

REGISTRATION NUMBER	EXPIRES
---------------------	---------

I HEREBY CERTIFY THAT THE "RECORD DRAWING" MEASUREMENTS AS SHOWN
HEREON WERE MADE UNDER MY SUPERVISION OR AS NOTED AND ARE CORRECT
TO THE BEST OF MY KNOWLEDGE AND BELIEF.

REGISTRATION NUMBER	EXPIRE
---------------------	--------

I HEREBY CERTIFY THAT THE AS-BUILT ANNOTATIONS PROVIDED ON THIS DRAWING WERE BASED ON AN AS-BUILT SURVEY CONDUCTED UNDER MY SUPERVISION AND ACCURATELY DEPICTS EXISTING FIELD CONDITIONS TO THE BEST OF MY KNOWLEDGE AND BELIEF.

REGISTRATION NUMBER	EXPIRE
---------------------	--------

COMPLYING WITH THE ARIZONA STATE BOARD OF TECHNICAL REGISTRATION'S SUBSTANTIVE POLICY STATEMENT REGARDING SEALING OF STANDARD DETAILS THE STANDARD DETAILS USED IN THE DESIGN OF THIS PROJECT HAVE BEEN FORMALLY ADOPTED BY THE AGENCIES THAT PREPARED THEM. IN VIEW OF THEIR LONG HISTORY OF USE, APPLICABILITY, AND/OR SOUNDNESS, THE ENGINEER ACCEPTS THEIR USE FOR THIS PROJECT AND FINDS NO NEED FOR ALTERATION.

THE BASIS OF BEARINGS FOR THIS PROJECT IS THE NORTH LINE OF THE NORTHWEST QUARTER OF SECTION 30, TOWNSHIP 11 SOUTH, RANGE 13 EAST, G.S.R.M., TOWN OF ORO VALLEY, PIMA COUNTY, ARIZONA. SAID BEARING BEING: N 89°42'18" W.

BASIS OF ELEVATION: BASIS OF ELEVATION FOR THIS PROJECT IS BEING THE 3.25" ALUMINUM DISK IN DRILL HOLE 0.1 MILE NORTH OF HONEYBEE WASH ALONG VISTOSO BLVD., NORTH SIDE. NN 05. SAID ELEVATION= 2969.27 FEET NAVD 88 DATUM THIS PLAN IS NAVD 88 DATUM.

BENCHMARK NO. 1 IS BEING THE 3.25" ALUMINUM DISK IN DRILL HOLE 0.1 MILE NORTH OF HONEYBEE WASH ALONG VISTOSO BLVD., NORTH SIDE. NN 05. SAID ELEVATION= 2969.27 FEET NAVD 88 DATUM THIS PLAN IS NAVD 88 DATUM.

THE FOLLOWING CODES AND STANDARDS SHALL BE APPLICABLE TO THIS DEVELOPMENT:

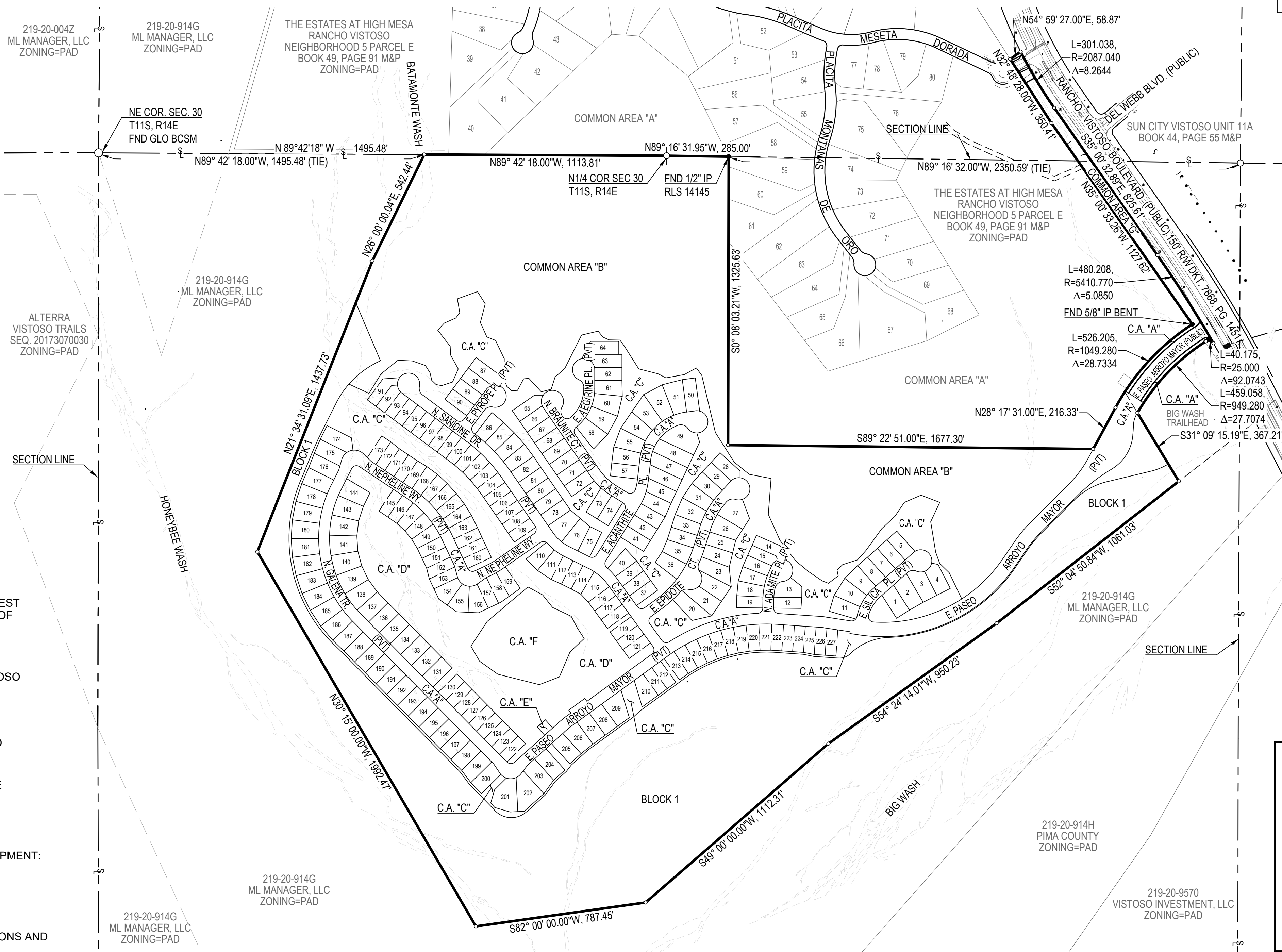
- 2018 INTERNATIONAL CODES WITH LOCAL AMENDMENTS
2011 NATIONAL ELECTRIC CODE
2010 ADA STANDARDS FOR ACCESSIBLE DESIGN
2006 GOLDER RANCH FIRE DISTRICT STANDARDS AND FORMS
2012 ORO VALLEY POOL CODE
2015 PIMA ASSOCIATION OF GOVERNMENTS (P.A.G.) STANDARD SPECIFICATIONS AND
DETAILS FOR PUBLIC IMPROVEMENTS
2010 TOWN OF ORO VALLEY DRAINAGE CRITERIA MANUAL
2004 TOWN OF ORO VALLEY SUBDIVISION STREET STANDARDS AND POLICIES MANUAL
TOWN OF ORO VALLEY ZONING CODE, CURRENT REVISED
ORO VALLEY TOWN CODE, CURRENT REVISED.

PAG STANDARD DETAILS

103	SURVEY MONUMENT	209	CONCRETE CURB - TYPE 2 WEDGE
105	HANDRAIL	210	CONCRETE CURB TRANSITION
107	REMOVABLE POST BARRICADE	211	CONCRETE CURB:
200	CONCRETE SIDEWALK		NEW TO EXISTING CONNECTION
203	CONCRETE SIDEWALK:	212	CONCRETE CURB TERMINAL SECTION
	NEW TO EXISTING CONNECTION	308	CATCH BASIN - TYPE 3
207	CURB ACCESS RAMP		WING LENGTH AS NOTED
209	CONCRETE CURB - TYPE 2 SINGLE VERTICAL	310	CATCH BASIN - TYPE 5
			NUMBER OF GRATES AND TYPE AS NOTED

209 CONCRETE CURB - TYPE 2 WEDGE
210 CONCRETE CURB TRANSITION
211 CONCRETE CURB:
NEW TO EXISTING CONNECTION
212 CONCRETE CURB TERMINAL SECTION
308 CATCH BASIN - TYPE 3
WING LENGTH AS NOTED
310 CATCH BASIN - TYPE 5
NUMBER OF GRATES AND TYPE AS NOTED

1900588



SCALE: 1"=300'

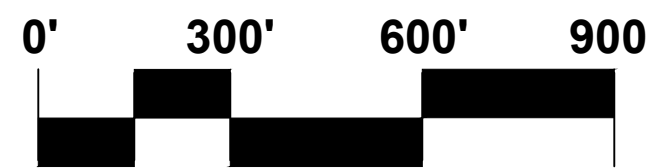
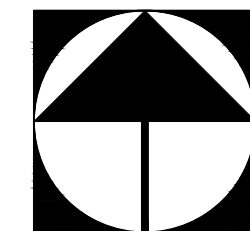
108	SEWER/WATER CROSSING DETAILS
111	SEWER EASEMENT TYPICAL SECTION
205	4' DIAMETER MANHOLE CONFIGURATIONS
211	CONCRETE COLLAR FOR PAVED AREAS
212	CONCRETE COLLAR FOR UNPAVED AREAS
214	"24" WATERTIGHT FRAME AND COVER"
301	CONNECTION TO EXISTING MANHOLE BASE
401	HCS CONNECTION TO SEWER LINE
402	HCS CONNECTION TO MANHOLES
404	HCS CLEANOUTS

#B-11.11 PIPE CULVERT HEADWALLS

JEN ARIZONA 34 LLC
2222 W. PINNACLE PEAK ROAD #1
PHOENIX, ARIZONA 85027
(602) 679-8013
ATTN: MICHAEL J. CRONIN
MCRONIN@TERRAWESTAZ.COM

THE WLB GROUP, INC.
4444 E. BROADWAY BLVD.
TUCSON, AZ. 85711
(520) 881-7480
ATTN: DAVID LITTLE, PE
DLITTLE@WLBGROUP.COM

1900 E. RANCHO VISTOSO BOULEVARD
ORO VALLEY, AZ 85755



PROJECT NO: 1900588
RELATED CASE #s
OV1701630, OV1701068
(R)17-53, (O)17-19

Engineering Planning Surveying
Landscape Architecture Urban Design
Offices located in Tucson, Phoenix and
Flagstaff, Arizona, and Las Vegas, Nevada.
4444 East Broadway
Tucson, Arizona (520) 881-7480

LOTS 1 THRU 227, BLOCK 1, COMMON AREA "A" (PRIVATE STREETS), COMMON AREA "B" & "F" (NATURAL OPEN SPACE),
COMMON AREA "C" & "G" (DRAINAGE/OPEN SPACE), COMMON AREA "D" (RECREATION/DRAINAGE/OPEN SPACE)
AND COMMON AREA "E" (PRIVATE LIFT STATION)

A PORTION OF SECTIONS 19 & 30, T11S, R14E, G&SRM TOWN OF ORO VALLEY, PIMA COUNTY, ARIZONA

**FINAL SITE PLAN, GRADING PLAN,
PRIVATE SEWER AND PRIVATE STREET IMPROVEMENT PLAN
COVER SHEET**

File:Q:\185050\TW-02 5HI Platting\04 Platting\04 FSP\H&I_FSP-IP_1 Cover Sheet.dwg Plot Date:2/9/2020 1:33 PM By:fernando

No.	Date	Item	Scale	AS NOTED
			Job No.	185050-TW02-0600
			Date	FEBRUARY 2020
			Designed By	DWD/JF
Revisions			Checked By	DWL

